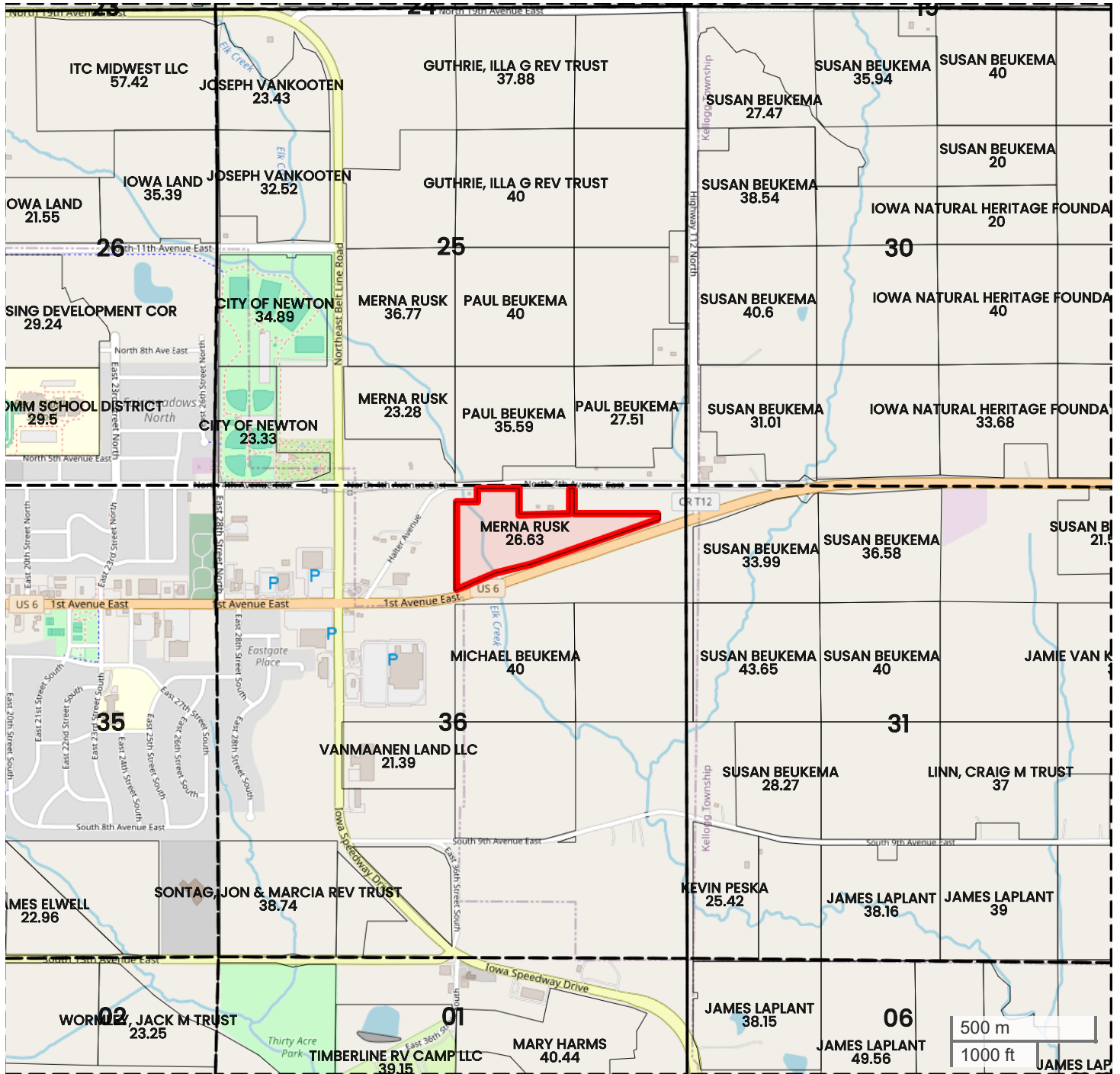




TRACT 4 - JASPER (27.03 AC TOTAL, 20.20 AC TILLABLE)

# PLAT MAP



Center: 41.701145, -93.005465

36-80N-19W

Newton Township

Jasper County, IA



FarmWorth, LLC makes no warranties, express or implied, regarding the accuracy of any information provided through FarmWorth.com. User is solely responsible for independently verifying all information prior to use and waives any claims against FarmWorth, LLC arising from inaccuracies in such information.