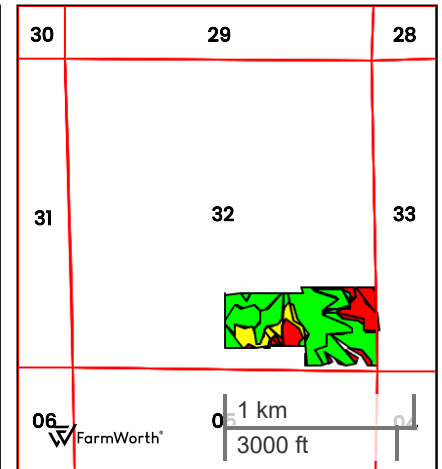
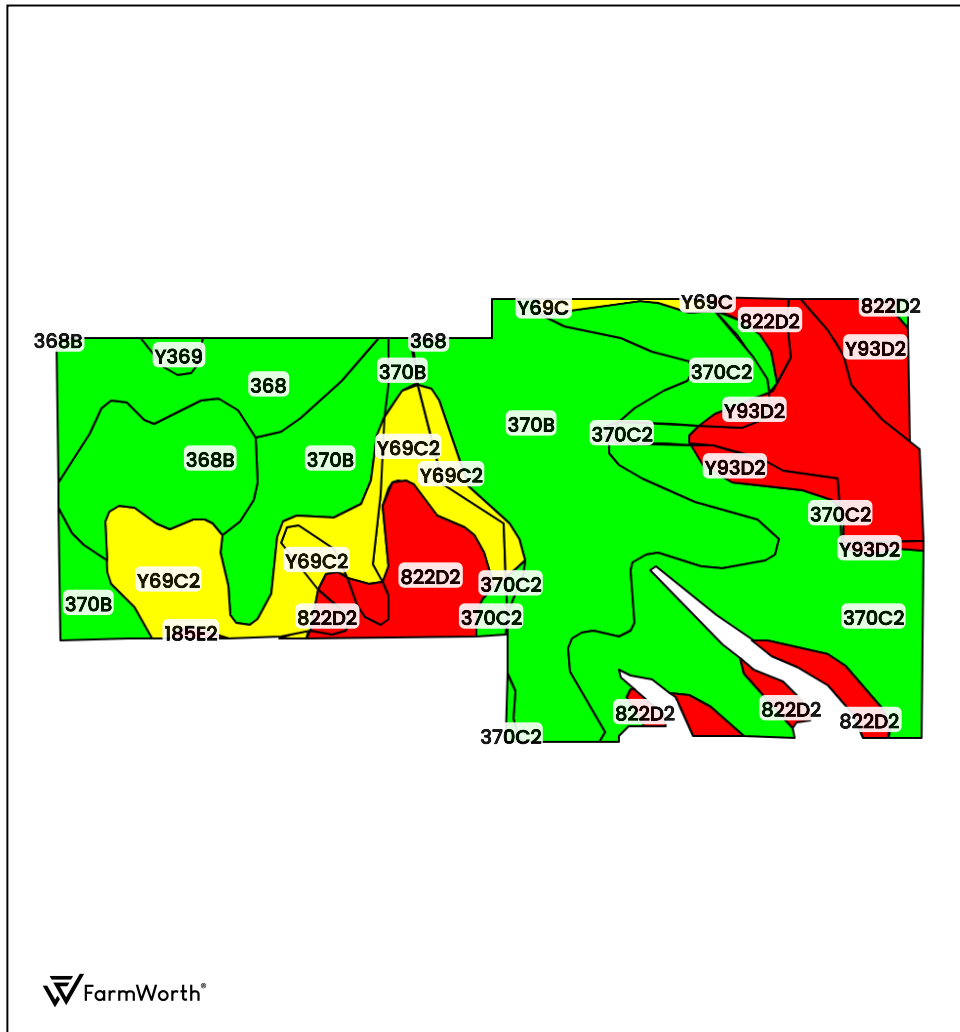




TRACT 1 (67.38 AC TOTAL, 64.10 AC TILLABLE)

TILLABLE SOILS



County: **Warren County, IA**
 Location: **32-76N-22W**
 Township: **Union**
 Acres: **64.10**
 Date: **01/08/2026**



Field borders obtained from Farm Service Agency
 as of 2008

FarmWorth, LLC makes no representations or warranties, express or implied, as to the accuracy of any information, data, numerical values, boundaries, or any other information generated through the use of FarmWorth.com. User is solely responsible for independently investigating and determining all information provided through FarmWorth.com prior to use and waives any and all claims against FarmWorth, LLC for any inaccuracies or inconsistencies in the information and/or data.

Code	Description	Acres	% of field	IA CSR2	Drainage Class
370B	Sharpsburg silty clay loam, 2 to 5 percent slopes	19.56	30.52 %	91	Moderately well drained
370C2	Sharpsburg silty clay loam, 5 to 9 percent slopes, eroded	14.60	22.78 %	80	Moderately well drained
Y93D2	Shelby-Adair clay loams, dissected till plain, 9 to 14 percent slopes, eroded	7.43	11.59 %	35	Well drained
Y69C2	Clearfield silty clay loam, dissected till plain, 5 to 9 percent slopes, eroded	7.13	11.12 %	56	Poorly drained
822D2	Lamon silty clay loam, 9 to 14 percent slopes, eroded	5.71	8.91 %	10	Somewhat poorly drained
368	Mackburg silty clay loam, 0 to 2 percent slopes	4.52	7.05 %	93	Somewhat poorly drained
368B	Mackburg silty clay loam, 2 to 5 percent slopes	4.39	6.85 %	89	Somewhat poorly drained
Y69C	Clearfield silty clay loam, dissected till plain, 5 to 9 percent slopes	0.34	0.53 %	59	Poorly drained
Y369	Winterset silty clay loam, 0 to 2 percent slopes	0.32	0.50 %	83	Poorly drained
185E2	Bauer silt loam, 14 to 18 percent slopes, moderately eroded	0.09	0.14 %	8	Moderately well drained
Average:				70.6	

IA has updated the CSR values for each county to CSR2.

Soils data provided by USDA and NRCS.