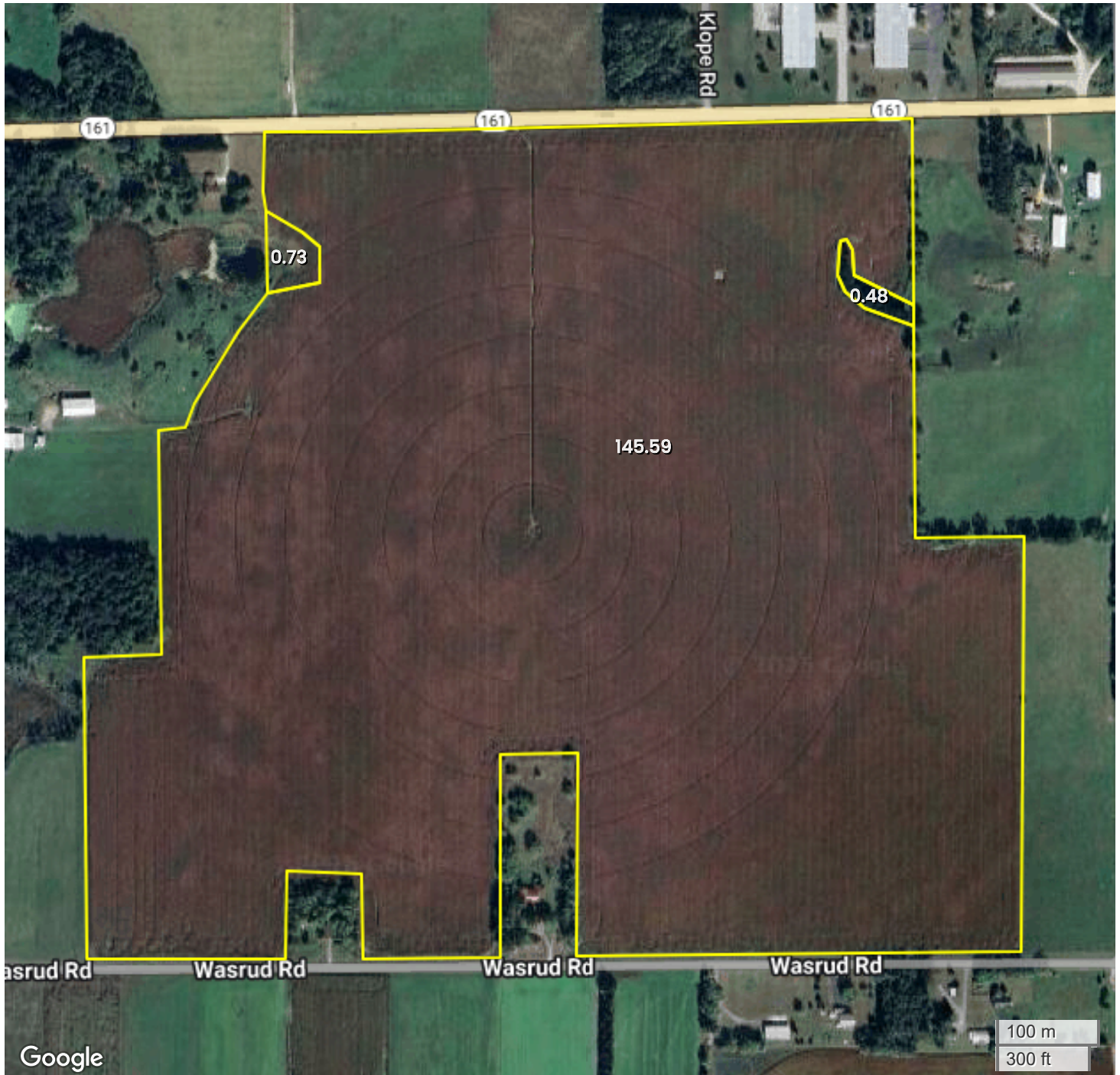




TRACT 8 (151.04 AC TOTAL, 145.59 AC TILLABLE)

AERIAL MAP



Center: 44.507510, -89.094012

31-24N-12E

Helvetia Township

Waupaca County, WI

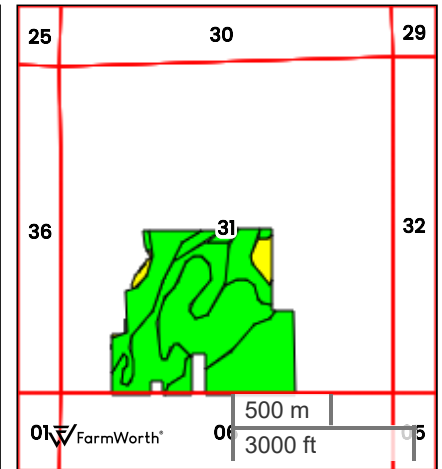
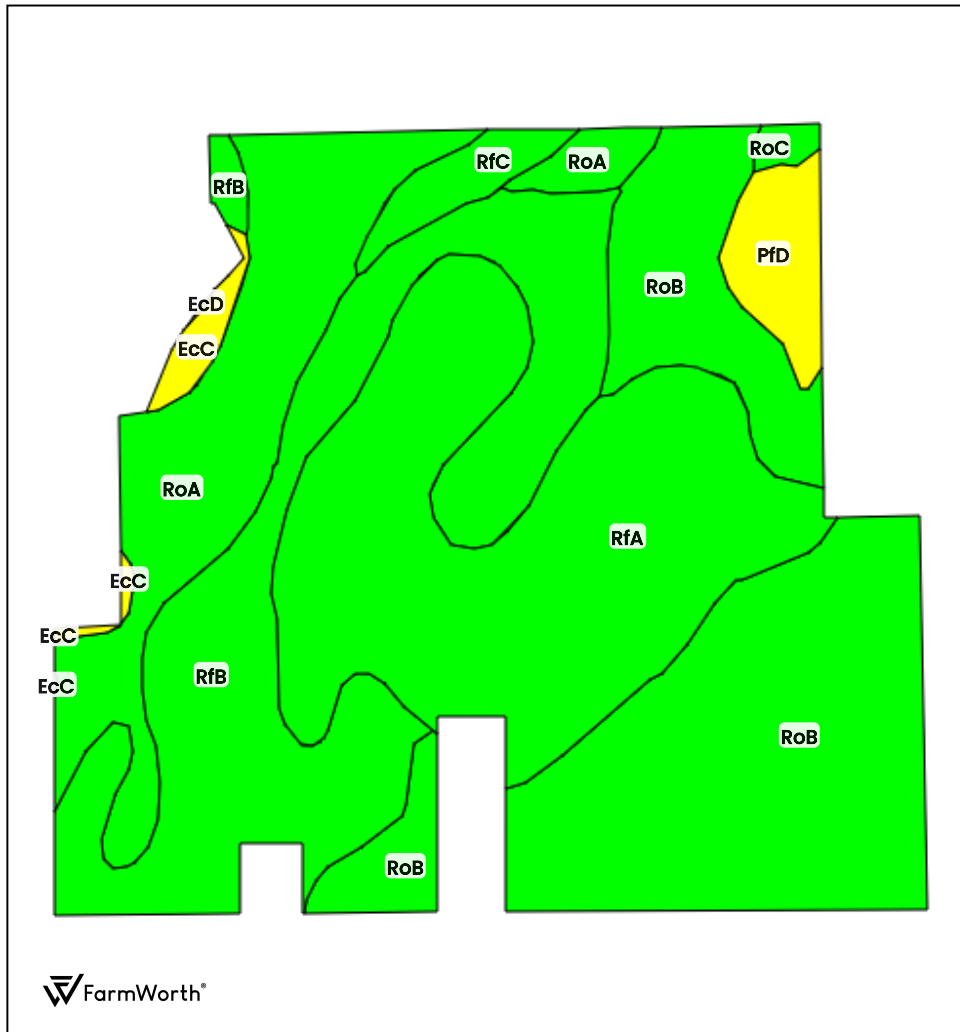


FarmWorth, LLC makes no representations or warranties, express or implied, as to the accuracy of any information, data, numerical values, boundaries, or any other information generated through the use of FarmWorth.com. User is solely responsible for independently investigating and determining all information provided through FarmWorth.com prior to use and waives any and all claims against FarmWorth, LLC for any inaccuracies or inconsistencies in the information and/or data.



TRACT 8 (151.04 AC TOTAL, 145.59 AC TILLABLE)

TOTAL SOILS



County: **Waupaca County, WI**

Location: **31-24N-12E**

Township: **Helvetia**

Acres: **151.04**

Date: **11/26/2025**



Field borders obtained from Farm Service Agency
as of 2008

FarmWorth, LLC makes no representations or warranties, express or implied, as to the accuracy of any information, data, numerical values, boundaries, or any other information generated through the use of FarmWorth.com. User is solely responsible for independently investigating and determining all information provided through FarmWorth.com prior to use and waives any and all claims against FarmWorth, LLC for any inaccuracies or inconsistencies in the information and/or data.

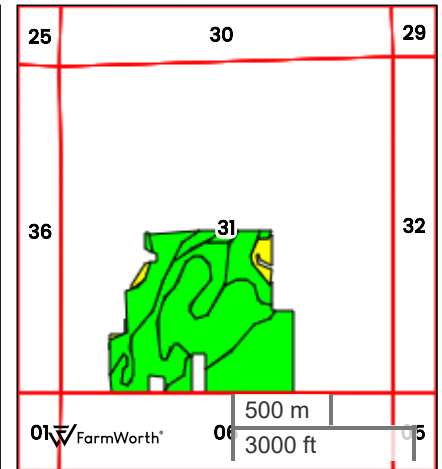
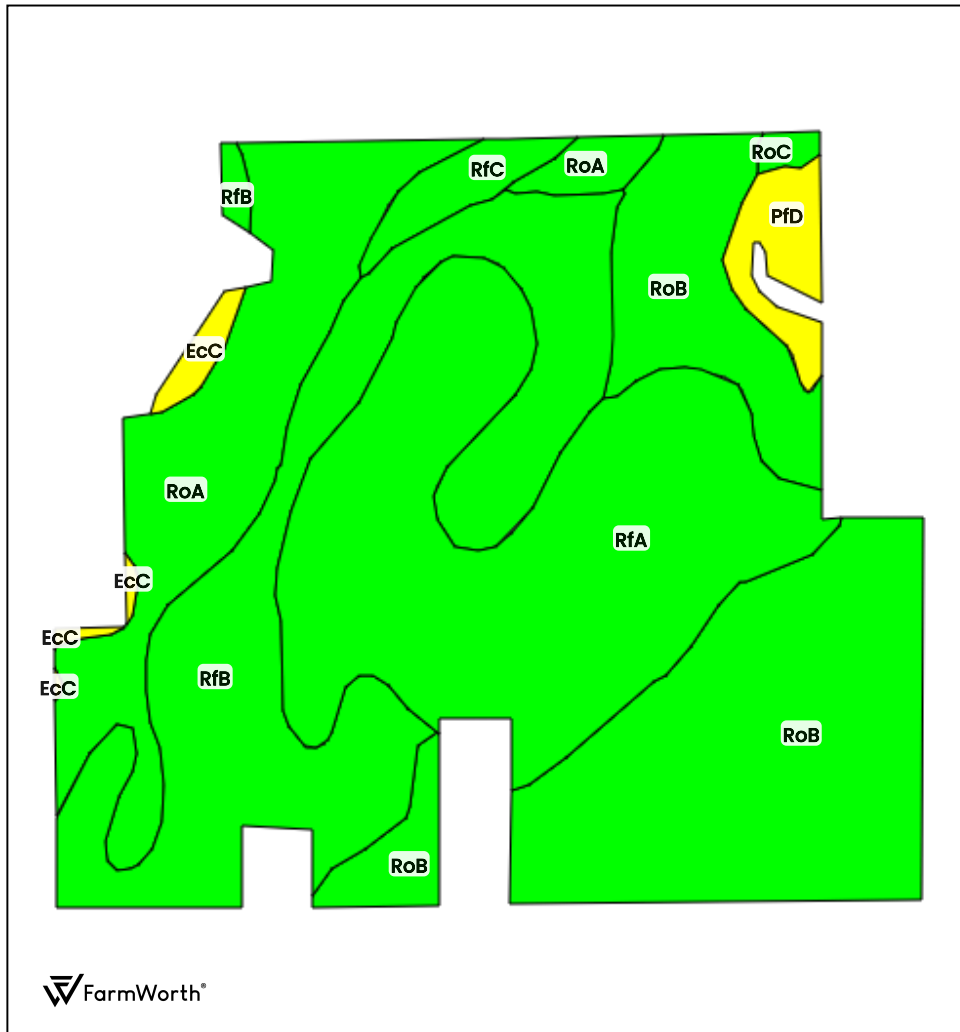
Code	Description	Acres	% of field	Overall NCCPI	Soil Class (Irr)	Soil Class (Non-Irr)	Drainage Class
RoB	Rosholt sandy loam, 2 to 6 percent slopes	45.06	29.84 %	49	-	2	Well drained
RfA	Richford loamy sand, 0 to 2 percent slopes	40.86	27.05 %	51	3	3	Somewhat excessively drained
RfB	Richford loamy sand, 2 to 6 percent slopes	33.80	22.38 %	50	-	3	Somewhat excessively drained
RoA	Rosholt sandy loam, 0 to 2 percent slopes	21.83	14.45 %	49	-	2	Well drained
PfD	Plainfield loamy sand, 12 to 30 percent slopes	4.24	2.81 %	25	-	7	Excessively drained
RfC	Richford loamy sand, 6 to 12 percent slopes	2.76	1.83 %	46	-	3	Somewhat excessively drained
EcC	Elderon-Rosholt complex, 6 to 12 percent slopes	1.76	1.17 %	51	-	6	Well drained
RoC	Rosholt sandy loam, 6 to 15 percent slopes	0.69	0.46 %	43	-	3	Well drained
EcD	Elderon-Rosholt complex, 12 to 30 percent slopes	0.03	0.02 %	43	-	7	Somewhat excessively drained
Average:				49.0			

Soils data provided by USDA and NRCS.



TRACT 8 (151.04 AC TOTAL, 145.59 AC TILLABLE)

TILLABLE SOILS



County: **Waupaca County, WI**

Location: **31-24N-12E**

Township: **Helvetia**

Acres: **145.59**

Date: **11/26/2025**



Field borders obtained from Farm Service Agency
as of 2008

FarmWorth, LLC makes no representations or warranties, express or implied, as to the accuracy of any information, data, numerical values, boundaries, or any other information generated through the use of FarmWorth.com. User is solely responsible for independently investigating and determining all information provided through FarmWorth.com prior to use and waives any and all claims against FarmWorth, LLC for any inaccuracies or inconsistencies in the information and/or data.

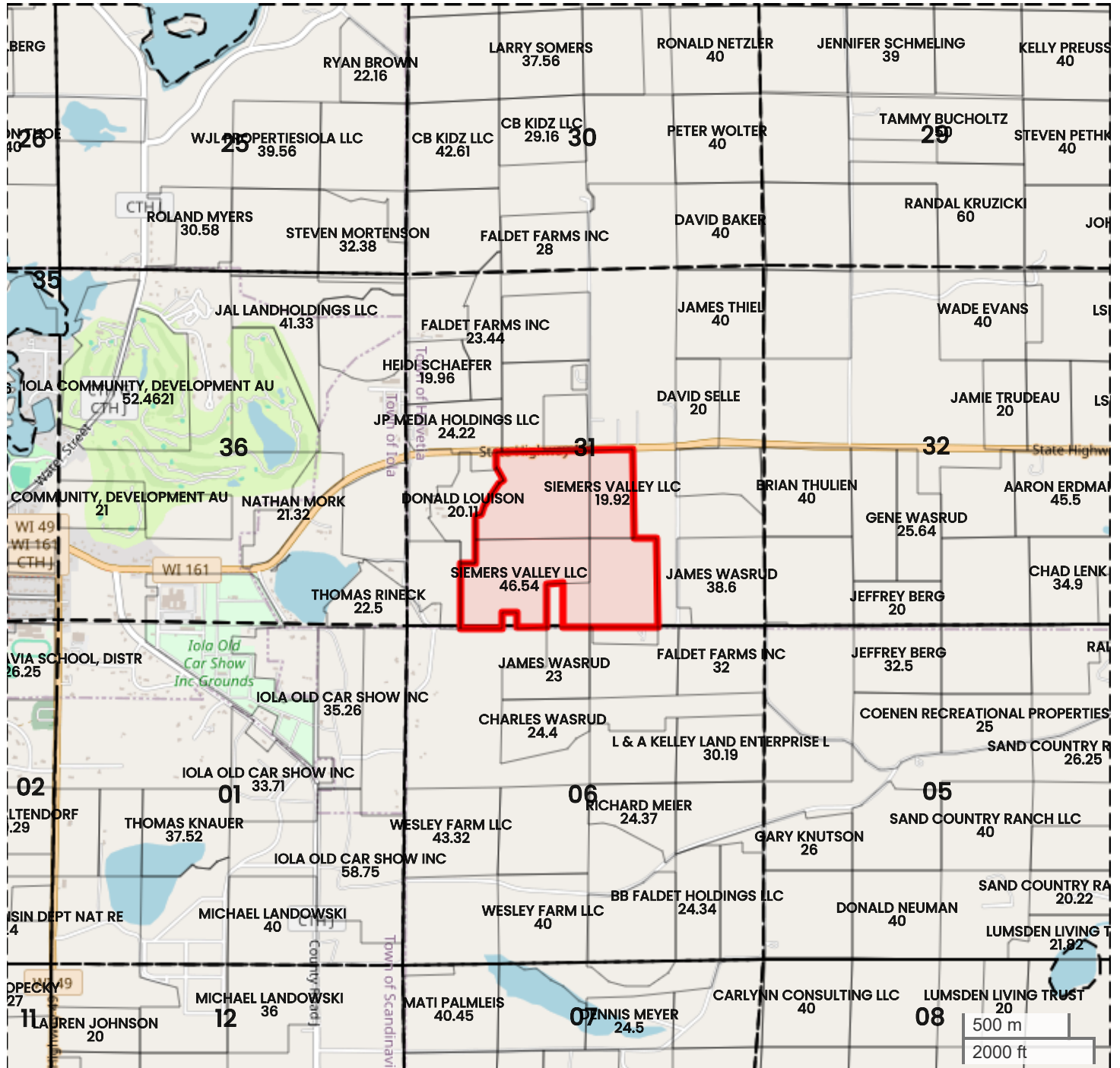
Code	Description	Acres	% of field	Overall NCCPI	Soil Class (Irr)	Soil Class (Non-Irr)	Drainage Class
RoB	Rosholt sandy loam, 2 to 6 percent slopes	42.77	29.38 %	49	-	2	Well drained
RfA	Richford loamy sand, 0 to 2 percent slopes	40.78	28.01 %	51	3	3	Somewhat excessively drained
RfB	Richford loamy sand, 2 to 6 percent slopes	32.74	22.49 %	50	-	3	Somewhat excessively drained
RoA	Rosholt sandy loam, 0 to 2 percent slopes	21.08	14.48 %	49	-	2	Well drained
PfD	Plainfield loamy sand, 12 to 30 percent slopes	3.54	2.43 %	25	-	7	Excessively drained
RfC	Richford loamy sand, 6 to 12 percent slopes	2.60	1.79 %	46	-	3	Somewhat excessively drained
EcC	Elderon-Rosholt complex, 6 to 12 percent slopes	1.49	1.02 %	51	-	6	Well drained
RoC	Rosholt sandy loam, 6 to 15 percent slopes	0.59	0.41 %	43	-	3	Well drained
Average:				49.1			

Soils data provided by USDA and NRCS.



TRACT 8 (151.04 AC TOTAL, 145.59 AC TILLABLE)

PLAT MAP



Center: 44.507520, -89.093971

31-24N-12E

Helvetia Township

Waupaca County, WI

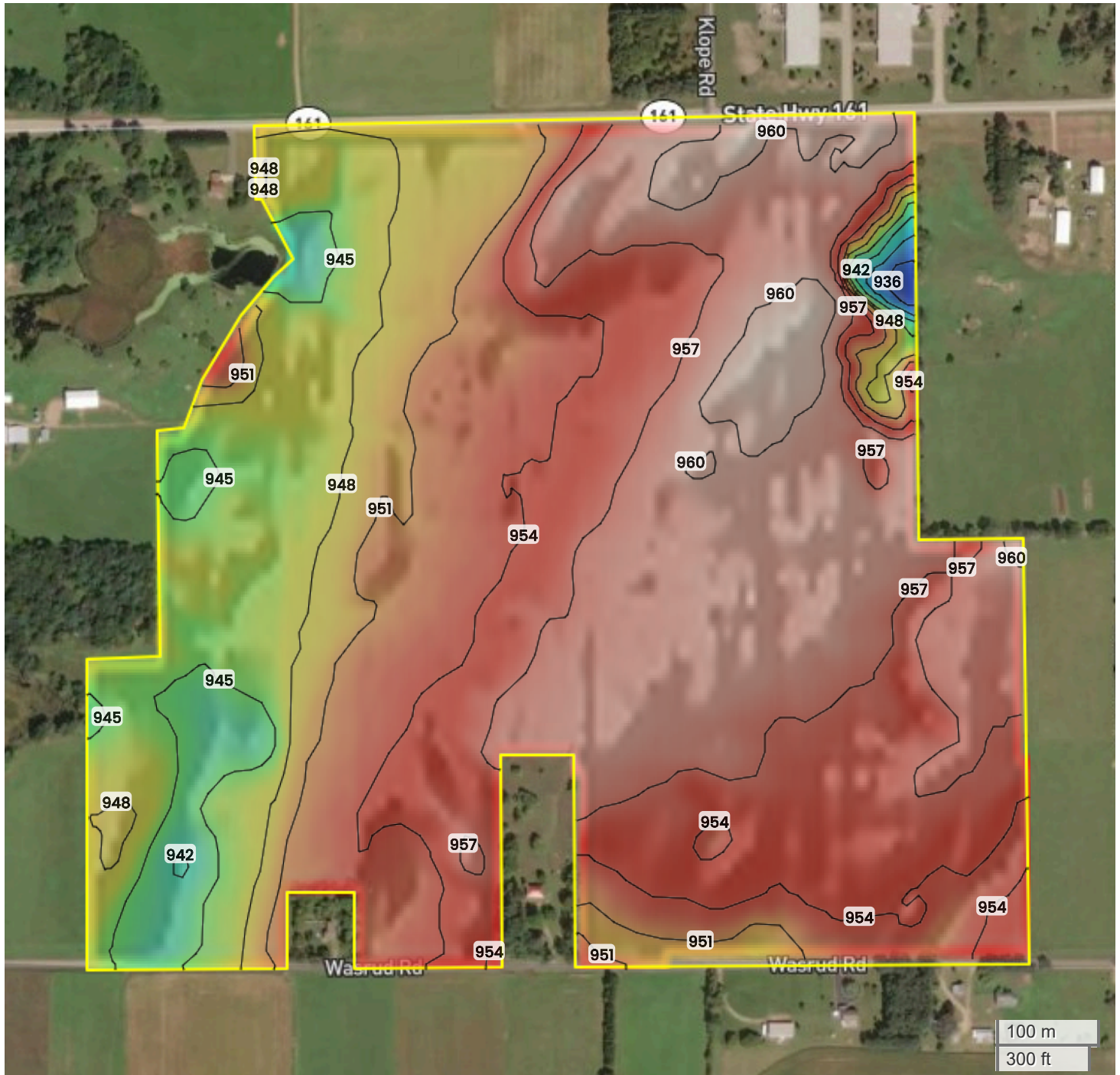


FarmWorth, LLC makes no representations or warranties, express or implied, as to the accuracy of any information, data, numerical values, boundaries, or any other information generated through the use of FarmWorth.com. User is solely responsible for independently investigating and determining all information provided through FarmWorth.com prior to use and waives any and all claims against FarmWorth, LLC for any inaccuracies or inconsistencies in the information and/or data.



TRACT 8 (151.04 AC TOTAL, 145.59 AC TILLABLE)

TOPOGRAPHY



936 ft

960 ft



Center: 44.507494, -89.093948

31-24N-12E

Helvetia Township

Waupaca County, WI

Source: USGS 10m DEM

Interval(ft): 3

Max: 960.0 ft

Min: 936.0 ft

Range: 24.0 ft

Average: 948.0 ft

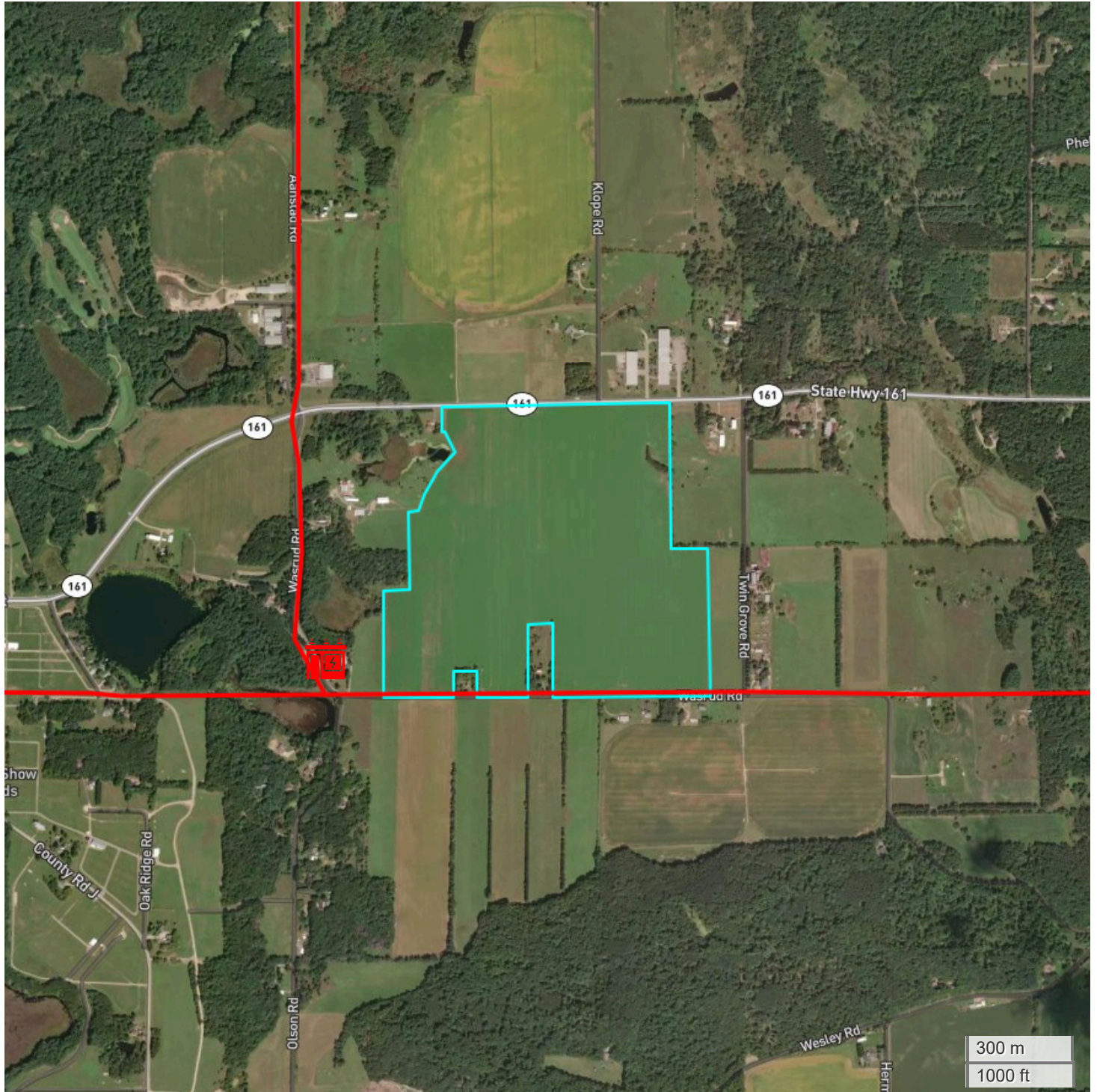


FarmWorth, LLC makes no representations or warranties, express or implied, as to the accuracy of any information, data, numerical values, boundaries, or any other information generated through the use of FarmWorth.com. User is solely responsible for independently investigating and determining all information provided through FarmWorth.com prior to use and waives any and all claims against FarmWorth, LLC for any inaccuracies or inconsistencies in the information and/or data.



TRACT 8 (151.04 AC TOTAL, 145.59 AC TILLABLE)

ENERGY MAP



FarmWorth, LLC makes no representations or warranties, express or implied, as to the accuracy of any information, data, numerical values, boundaries, or any other information generated through the use of FarmWorth.com. User is solely responsible for independently investigating and determining all information provided through FarmWorth.com prior to use and waives any and all claims against FarmWorth, LLC for any inaccuracies or inconsistencies in the information and/or data.

- Transmission Lines
- Substations
- Wind Turbine
- Wind Farm
- Solar
- Oil and Gas (Active)
- Oil and Gas (Abandoned)