



TRACT 5 (47.53 AC TOTAL, 43.51 AC TILLABLE)

AERIAL MAP



Center: 44.475293, -89.186682

17-23N-11E

Scandinavia Township

Waupaca County, WI

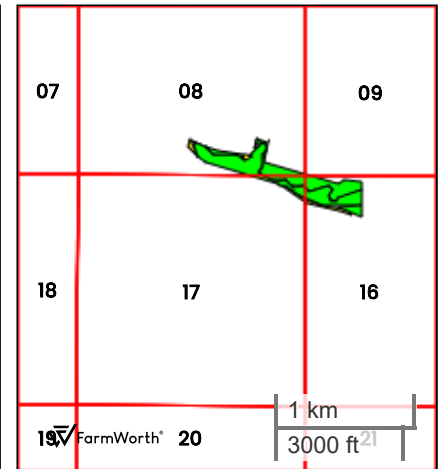
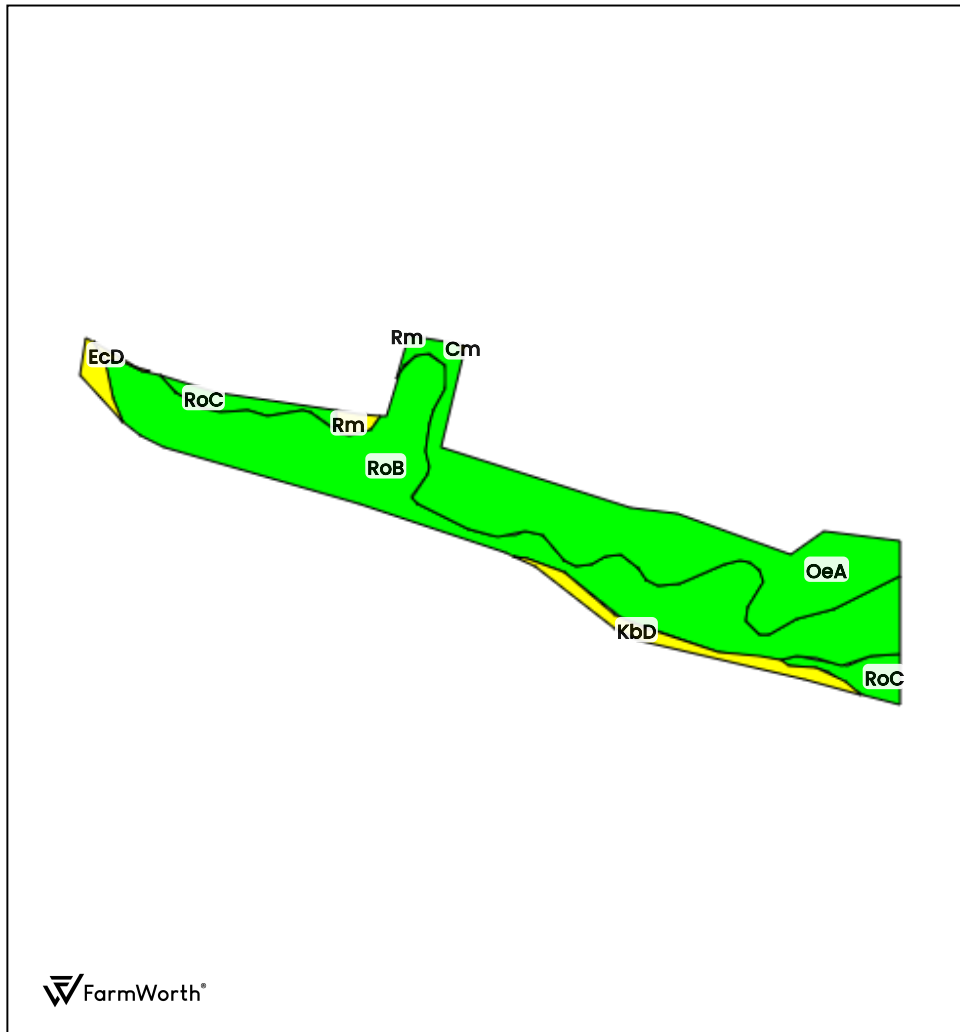


FarmWorth, LLC makes no representations or warranties, express or implied, as to the accuracy of any information, data, numerical values, boundaries, or any other information generated through the use of FarmWorth.com. User is solely responsible for independently investigating and determining all information provided through FarmWorth.com prior to use and waives any and all claims against FarmWorth, LLC for any inaccuracies or inconsistencies in the information and/or data.



TRACT 5 (47.53 AC TOTAL, 43.51 AC TILLABLE)

TOTAL SOILS



County: **Waupaca County, WI**

Location: **17-23N-11E**

Township: **Scandinavia**

Acres: **47.53**

Date: **11/26/2025**



Field borders obtained from Farm Service Agency
as of 2008

FarmWorth, LLC makes no representations or warranties, express or implied, as to the accuracy of any information, data, numerical values, boundaries, or any other information generated through the use of FarmWorth.com. User is solely responsible for independently investigating and determining all information provided through FarmWorth.com prior to use and waives any and all claims against FarmWorth, LLC for any inaccuracies or inconsistencies in the information and/or data.

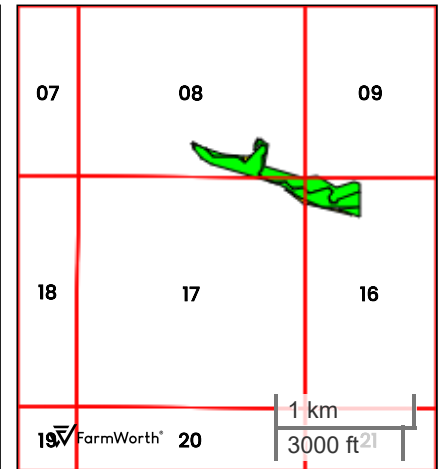
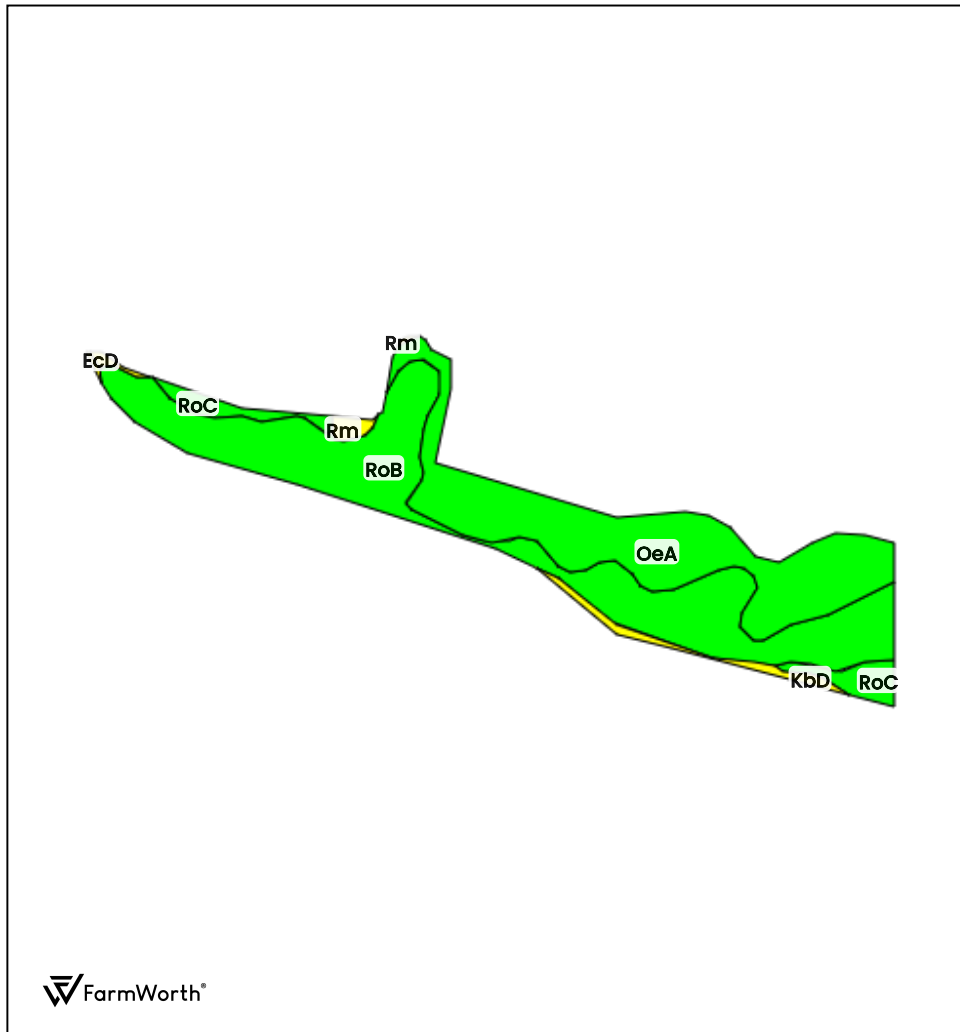
Code	Description	Acres	% of field	Overall NCCPI	Soil Class (Irr)	Soil Class (Non-Irr)	Drainage Class
RoB	Rosholt sandy loam, 2 to 6 percent slopes	24.10	50.71 %	49	-	2	Well drained
OeA	Oesterle sandy loam, 0 to 3 percent slopes	17.36	36.52 %	55	-	2	Somewhat poorly drained
Kbd	Kennan, very bouldery and Kennan sandy loams, 15 to 30 percent slopes	2.77	5.83 %	38	-	6	Well drained
RoC	Rosholt sandy loam, 6 to 15 percent slopes	2.76	5.81 %	43	-	3	Well drained
Rm	Roscommon mucky loamy sand, outwash plain, 0 to 2 percent slopes	0.40	0.84 %	28	-	6	Poorly drained
EcD	Elderon-Rosholt complex, 12 to 30 percent slopes	0.12	0.25 %	43	-	7	Somewhat excessively drained
Cm	Cathro and Markey mucks	0.02	0.04 %	54	-	6	Very poorly drained
Average:				50.0			

Soils data provided by USDA and NRCS.



TRACT 5 (47.53 AC TOTAL, 43.51 AC TILLABLE)

TILLABLE SOILS



County: **Waupaca County, WI**

Location: **17-23N-11E**

Township: **Scandinavia**

Acres: **43.51**

Date: **11/26/2025**



Field borders obtained from Farm Service Agency
as of 2008

FarmWorth, LLC makes no representations or warranties, express or implied, as to the accuracy of any information, data, numerical values, boundaries, or any other information generated through the use of FarmWorth.com. User is solely responsible for independently investigating and determining all information provided through FarmWorth.com prior to use and waives any and all claims against FarmWorth, LLC for any inaccuracies or inconsistencies in the information and/or data.

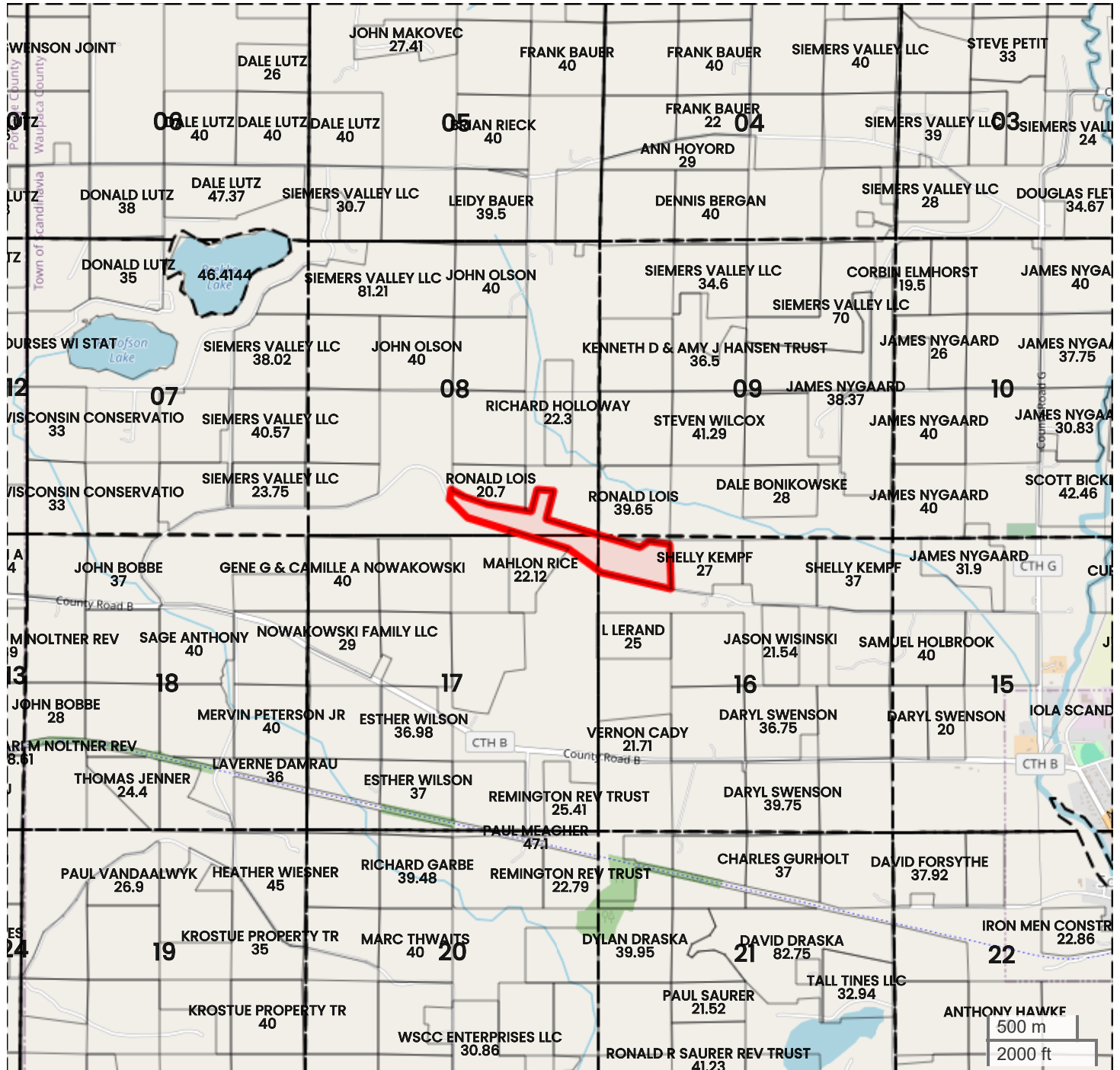
Code	Description	Acres	% of field	Overall NCCPI	Soil Class (Irr)	Soil Class (Non-Irr)	Drainage Class
RoB	Rosholt sandy loam, 2 to 6 percent slopes	22.01	50.59 %	49	-	2	Well drained
OeA	Oesterle sandy loam, 0 to 3 percent slopes	17.20	39.53 %	55	-	2	Somewhat poorly drained
RoC	Rosholt sandy loam, 6 to 15 percent slopes	2.58	5.93 %	43	-	3	Well drained
Kbd	Kennan, very bouldery and Kennan sandy loams, 15 to 30 percent slopes	1.06	2.44 %	38	-	6	Well drained
Rm	Roscommon mucky loamy sand, outwash plain, 0 to 2 percent slopes	0.49	1.13 %	28	-	6	Poorly drained
EcD	Elderon-Rosholt complex, 12 to 30 percent slopes	0.17	0.39 %	43	-	7	Somewhat excessively drained
Average:				50.5			

Soils data provided by USDA and NRCS.



TRACT 5 (47.53 AC TOTAL, 43.51 AC TILLABLE)

PLAT MAP



Center: 44.475233, -89.186784

17-23N-11E

Scandinavia Township

Waupaca County, WI

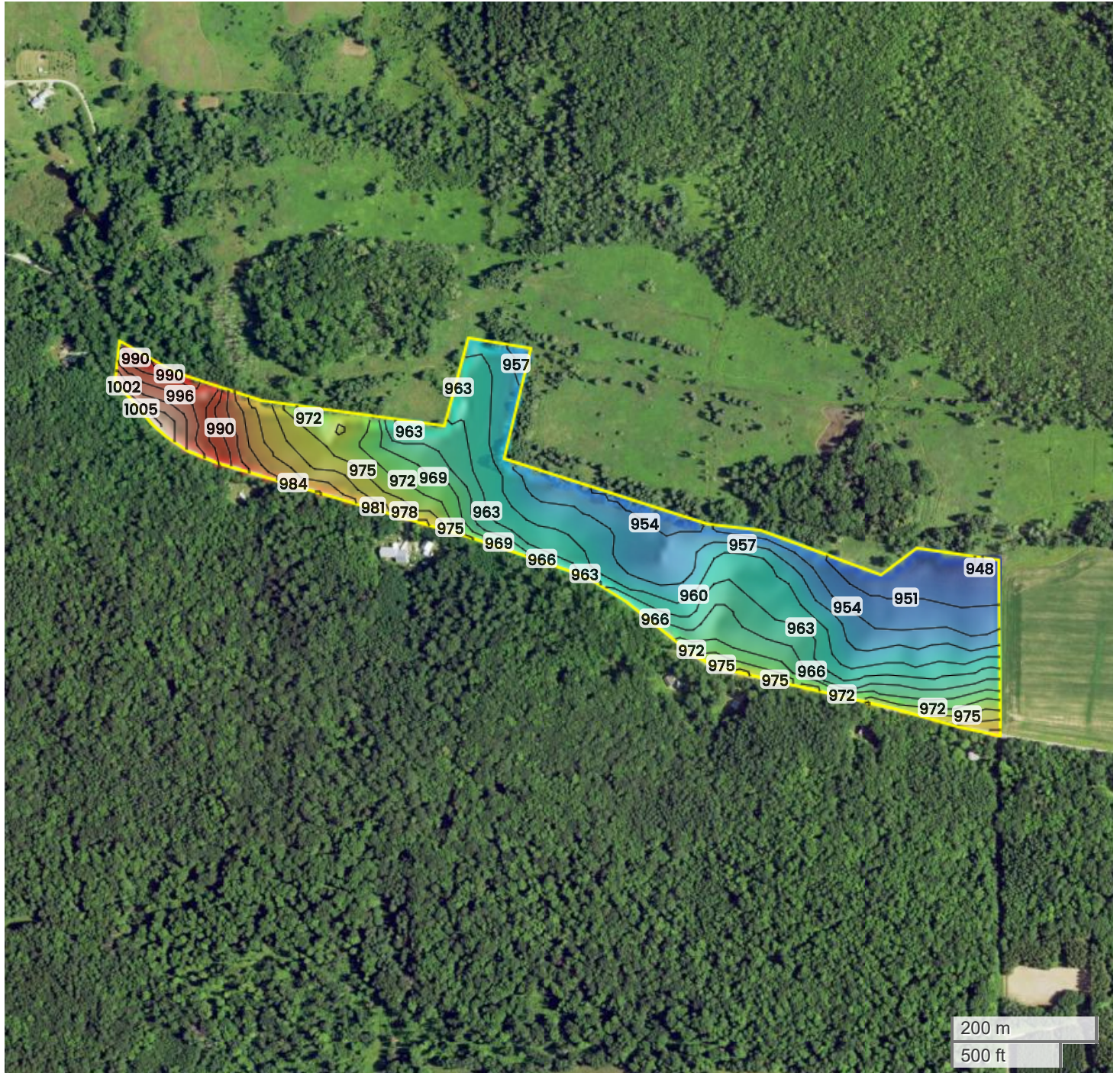


FarmWorth, LLC makes no representations or warranties, express or implied, as to the accuracy of any information, data, numerical values, boundaries, or any other information generated through the use of FarmWorth.com. User is solely responsible for independently investigating and determining all information provided through FarmWorth.com prior to use and waives any and all claims against FarmWorth, LLC for any inaccuracies or inconsistencies in the information and/or data.



TRACT 5 (47.53 AC TOTAL, 43.51 AC TILLABLE)

TOPOGRAPHY



948 ft 1005 ft



Center: 44.475229, -89.186763

17-23N-11E

Scandinavia Township
Waupaca County, WI

Source: USGS 10m DEM

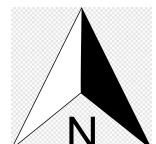
Interval(ft): 3

Max: 1005.0 ft

Min: 948.0 ft

Range: 57.0 ft

Average: 976.5 ft

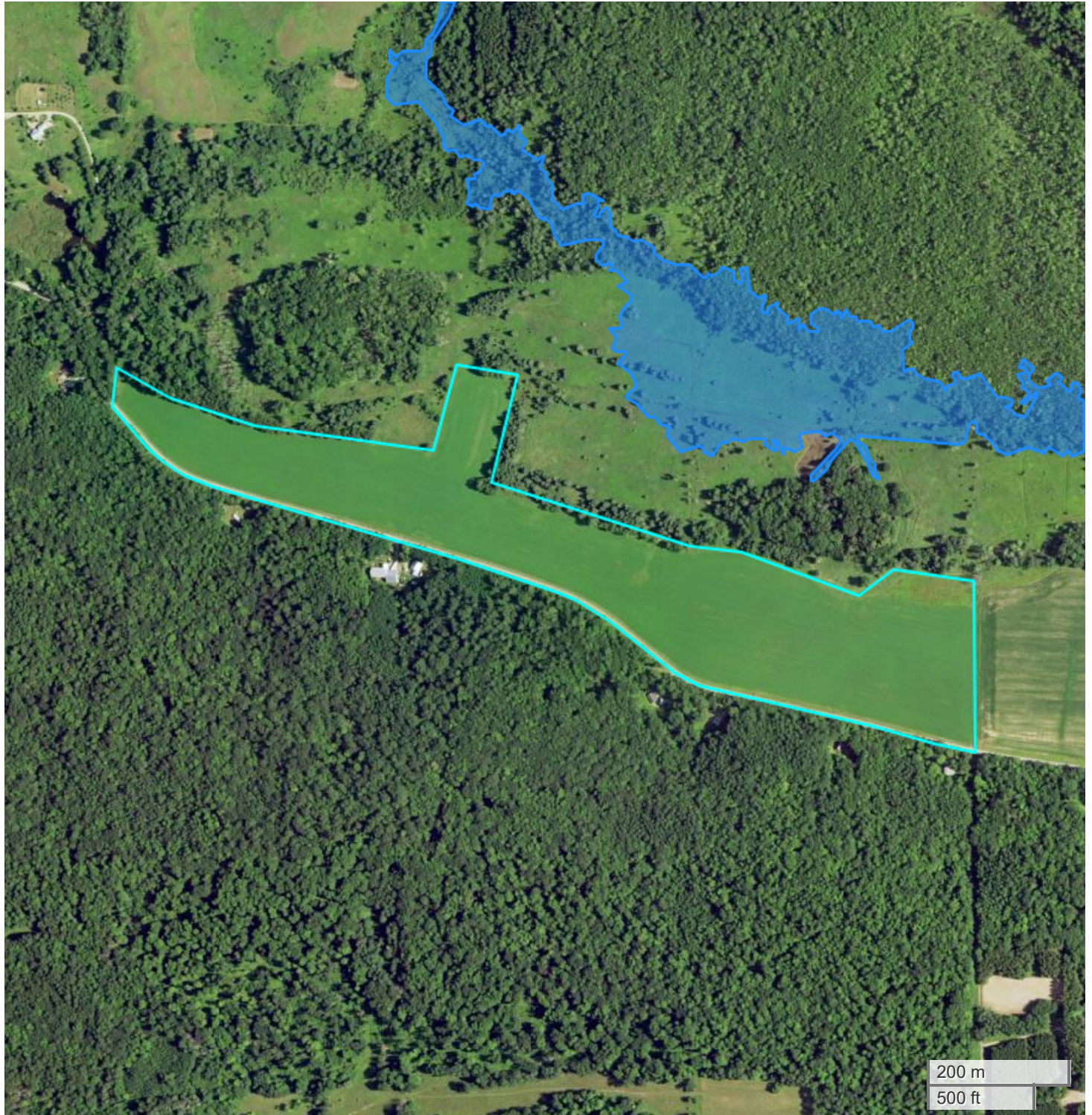


FarmWorth, LLC makes no representations or warranties, express or implied, as to the accuracy of any information, data, numerical values, boundaries, or any other information generated through the use of FarmWorth.com. User is solely responsible for independently investigating and determining all information provided through FarmWorth.com prior to use and waives any and all claims against FarmWorth, LLC for any inaccuracies or inconsistencies in the information and/or data.





TRACT 5 (47.53 AC TOTAL, 43.51 AC TILLABLE)

FLOOD HAZARDS



FarmWorth, LLC makes no representations or warranties, express or implied, as to the accuracy of any information, data, numerical values, boundaries, or any other information generated through the use of FarmWorth.com. User is solely responsible for independently investigating and determining all information provided through FarmWorth.com prior to use and waives any and all claims against FarmWorth, LLC for any inaccuracies or inconsistencies in the information and/or data.

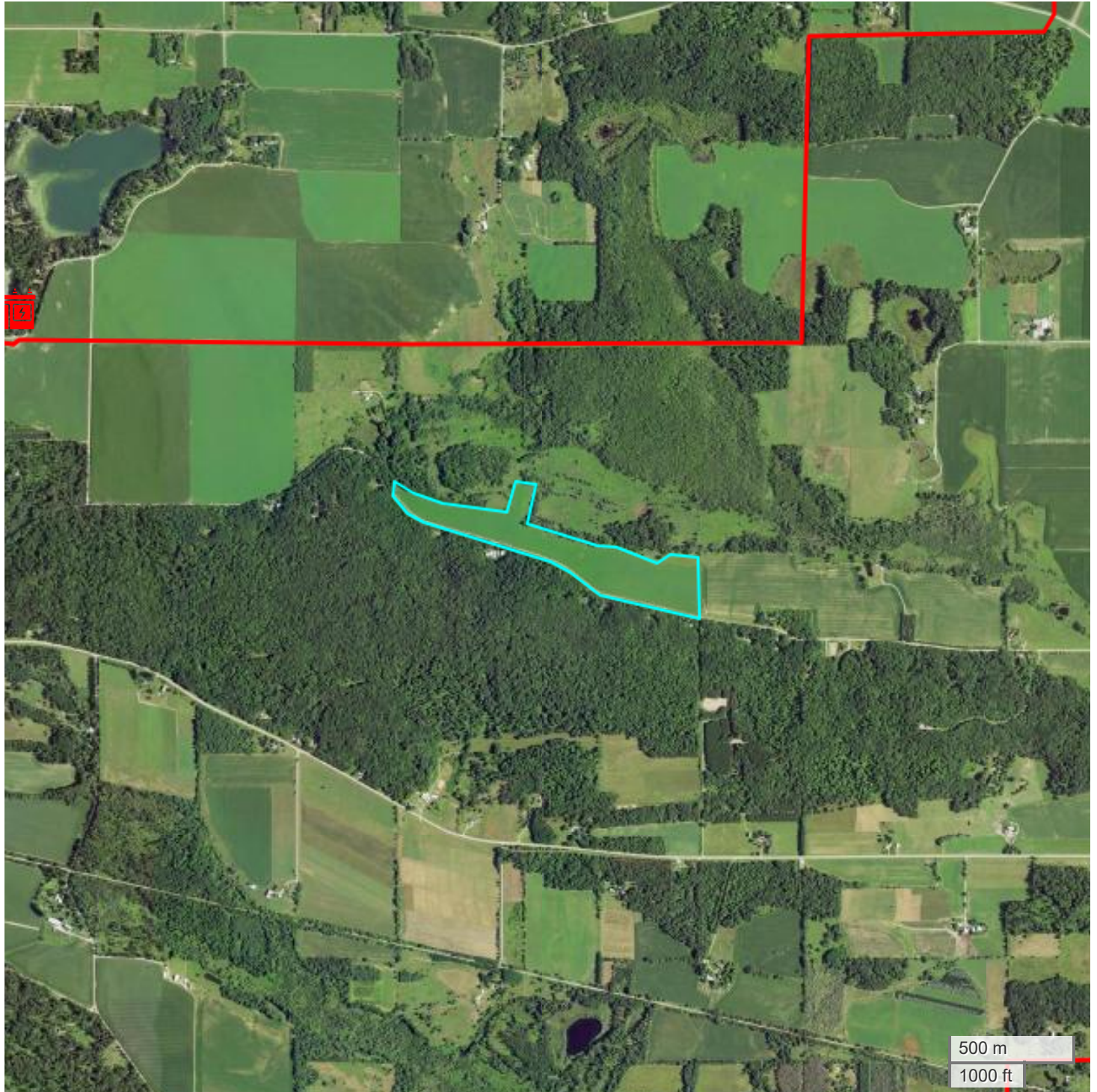
Significant Flood Hazards

-  Regulatory Floodway (Zones AE, AO, AH, VE, AR)
-  Without Base Flood Elevation (BFE), with BFE or Depth (Zones A, V, A99)



TRACT 5 (47.53 AC TOTAL, 43.51 AC TILLABLE)

ENERGY MAP



FarmWorth, LLC makes no representations or warranties, express or implied, as to the accuracy of any information, data, numerical values, boundaries, or any other information generated through the use of FarmWorth.com. User is solely responsible for independently investigating and determining all information provided through FarmWorth.com prior to use and waives any and all claims against FarmWorth, LLC for any inaccuracies or inconsistencies in the information and/or data.

- Transmission Lines
- Substations
- Wind Turbine
- Wind Farm
- Solar
- Oil and Gas (Active)
- Oil and Gas (Abandoned)