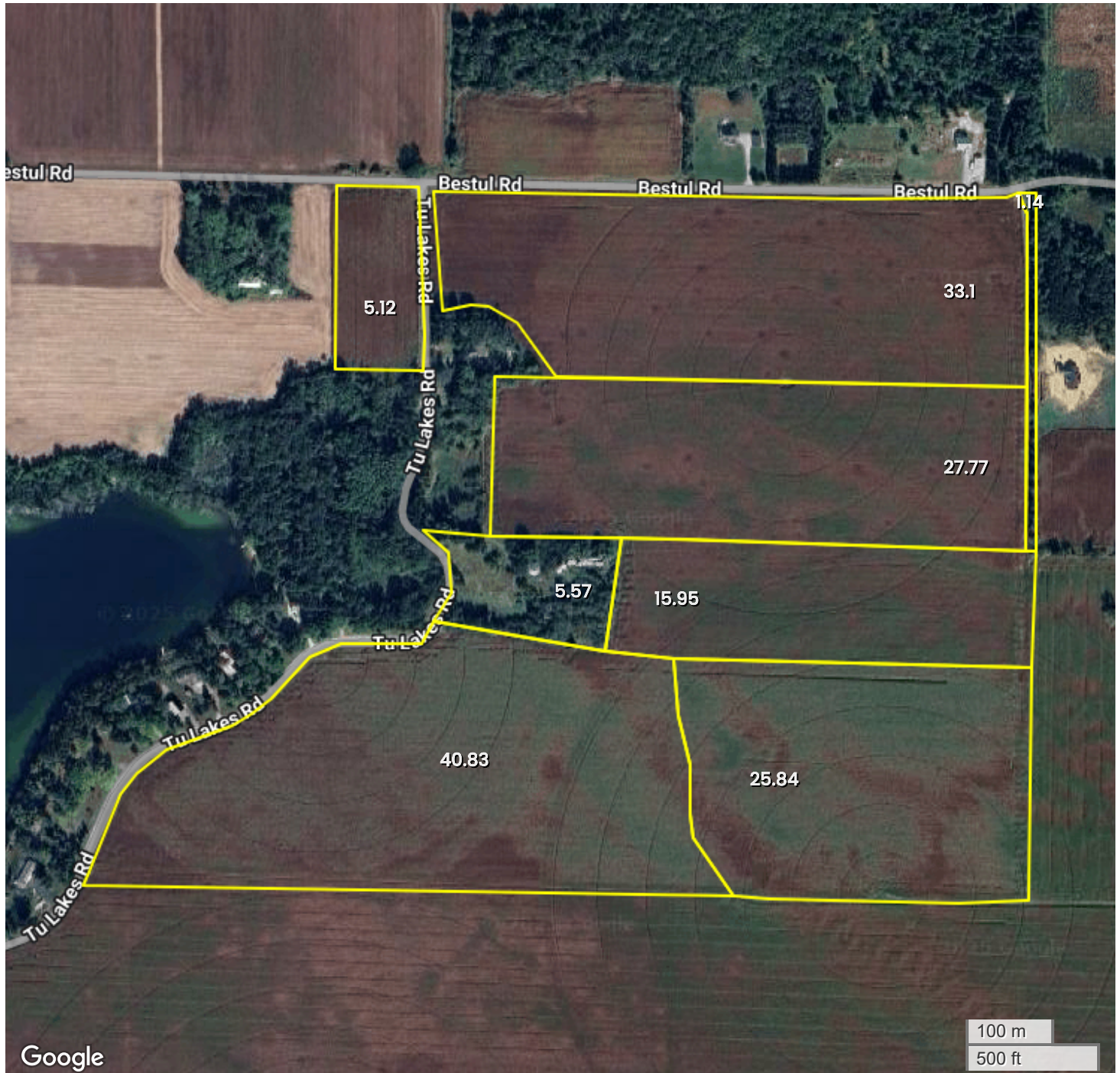




TRACT 3 (152.96 AC TOTAL, 148.61 AC TILLABLE)

## AERIAL MAP



Center: 44.489755, -89.200766

08-23N-11E

Scandinavia Township

Waupaca County, WI

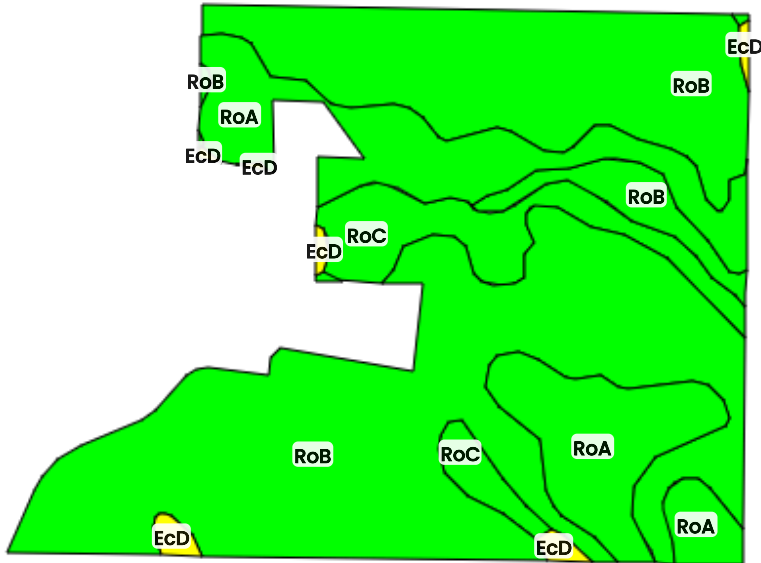


FarmWorth, LLC makes no representations or warranties, express or implied, as to the accuracy of any information, data, numerical values, boundaries, or any other information generated through the use of FarmWorth.com. User is solely responsible for independently investigating and determining all information provided through FarmWorth.com prior to use and waives any and all claims against FarmWorth, LLC for any inaccuracies or inconsistencies in the information and/or data.

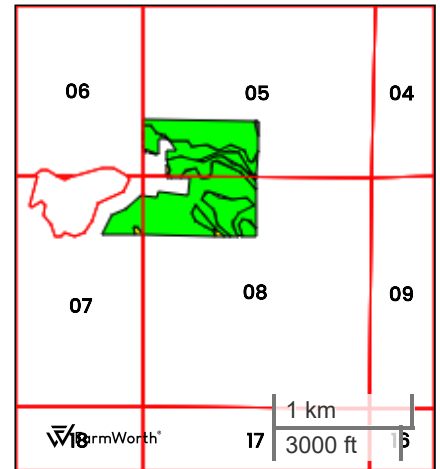


TRACT 3 (152.96 AC TOTAL, 148.61 AC TILLABLE)

## TOTAL SOILS



FarmWorth®



County: **Waupaca County, WI**

Location: **08-23N-11E**

Township: **Scandinavia**

Acres: **152.96**

Date: **11/26/2025**



Field borders obtained from Farm Service Agency  
as of 2008

FarmWorth, LLC makes no representations or warranties, express or implied, as to the accuracy of any information, data, numerical values, boundaries, or any other information generated through the use of FarmWorth.com. User is solely responsible for independently investigating and determining all information provided through FarmWorth.com prior to use and waives any and all claims against FarmWorth, LLC for any inaccuracies or inconsistencies in the information and/or data.

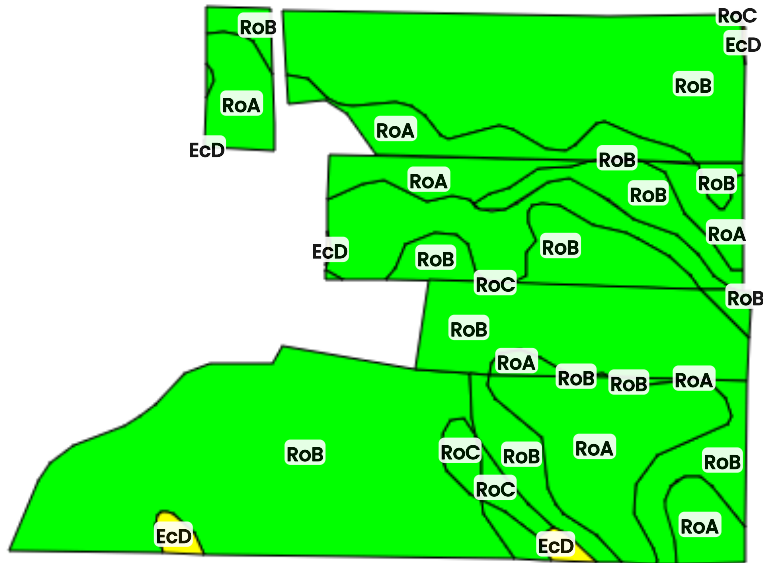
Code	Description	Acres	% of field	Overall NCCPI	Soil Class (Irr)	Soil Class (Non-Irr)	Drainage Class
RoB	Rosholt sandy loam, 2 to 6 percent slopes	105.58	69.03 %	49	-	2	Well drained
RoA	Rosholt sandy loam, 0 to 2 percent slopes	32.42	21.19 %	49	-	2	Well drained
RoC	Rosholt sandy loam, 6 to 15 percent slopes	13.06	8.54 %	43	-	3	Well drained
EcD	Elderon-Rosholt complex, 12 to 30 percent slopes	1.90	1.24 %	43	-	7	Somewhat excessively drained
Average:				48.4			

Soils data provided by USDA and NRCS.

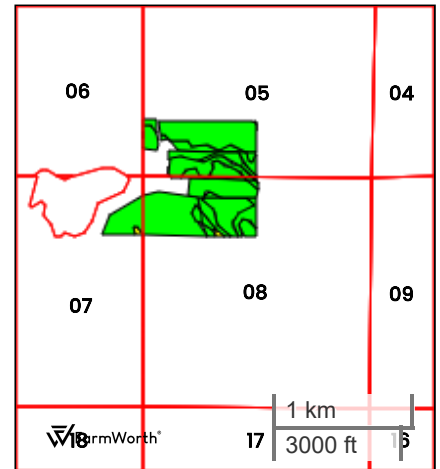


TRACT 3 (152.96 AC TOTAL, 148.61 AC TILLABLE)

## TILLABLE SOILS



FarmWorth®



County: **Waupaca County, WI**

Location: **08-23N-11E**

Township: **Scandinavia**

Acres: **148.61**

Date: **11/26/2025**



Field borders obtained from Farm Service Agency  
as of 2008

FarmWorth, LLC makes no representations or warranties, express or implied, as to the accuracy of any information, data, numerical values, boundaries, or any other information generated through the use of FarmWorth.com. User is solely responsible for independently investigating and determining all information provided through FarmWorth.com prior to use and waives any and all claims against FarmWorth, LLC for any inaccuracies or inconsistencies in the information and/or data.

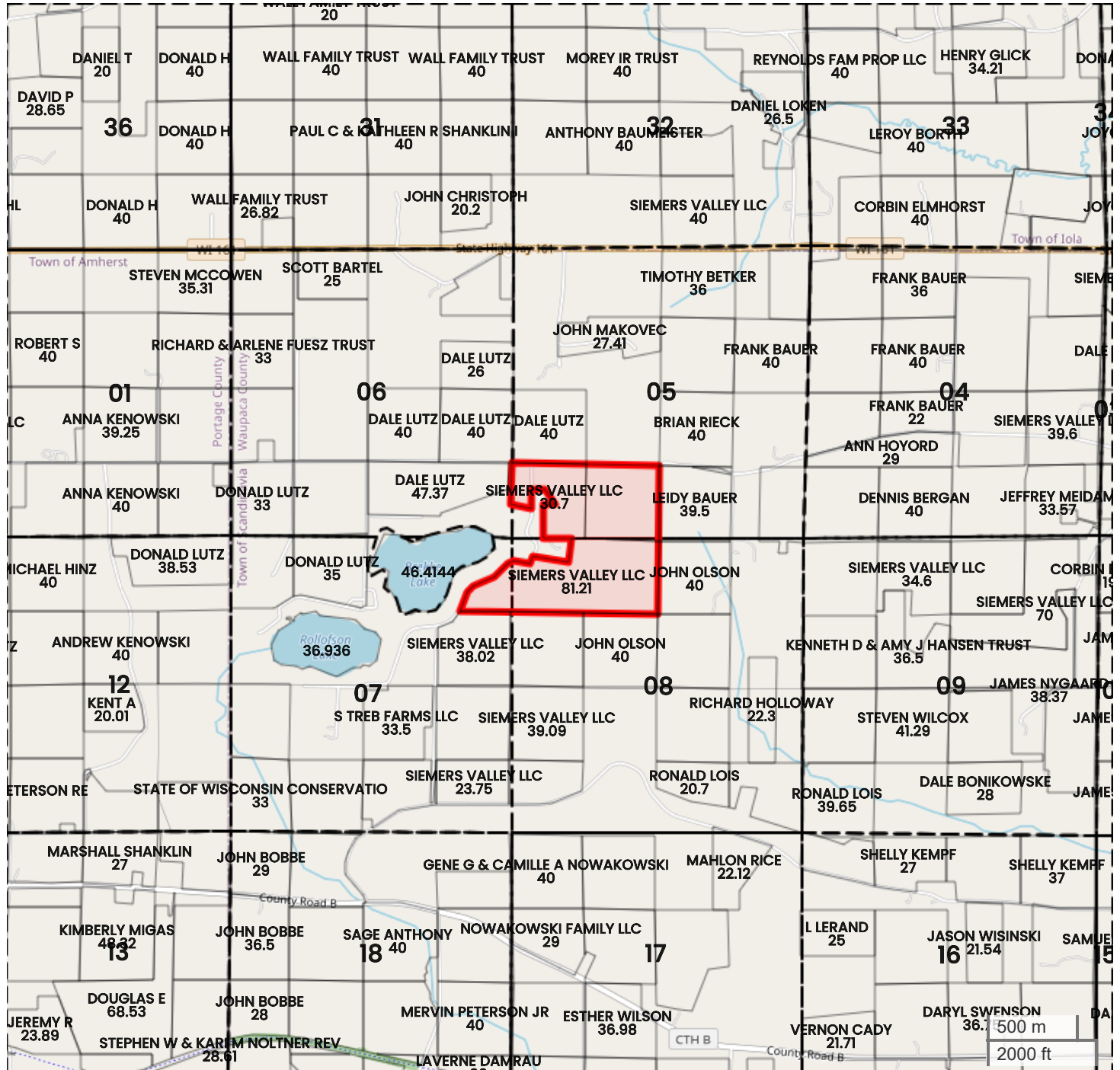
Code	Description	Acres	% of field	Overall NCCPI	Soil Class (Irr)	Soil Class (Non-Irr)	Drainage Class
RoB	Rosholt sandy loam, 2 to 6 percent slopes	103.31	69.52 %	49	-	2	Well drained
RoA	Rosholt sandy loam, 0 to 2 percent slopes	31.00	20.86 %	49	-	2	Well drained
RoC	Rosholt sandy loam, 6 to 15 percent slopes	12.89	8.67 %	43	-	3	Well drained
EcD	Elderon-Rosholt complex, 12 to 30 percent slopes	1.41	0.95 %	43	-	7	Somewhat excessively drained
Average:				48.4			

Soils data provided by USDA and NRCS.



TRACT 3 (152.96 AC TOTAL, 148.61 AC TILLABLE)

## PLAT MAP



Center: 44.489797, -89.200768

08-23N-11E

Scandinavia Township

Waupaca County, WI



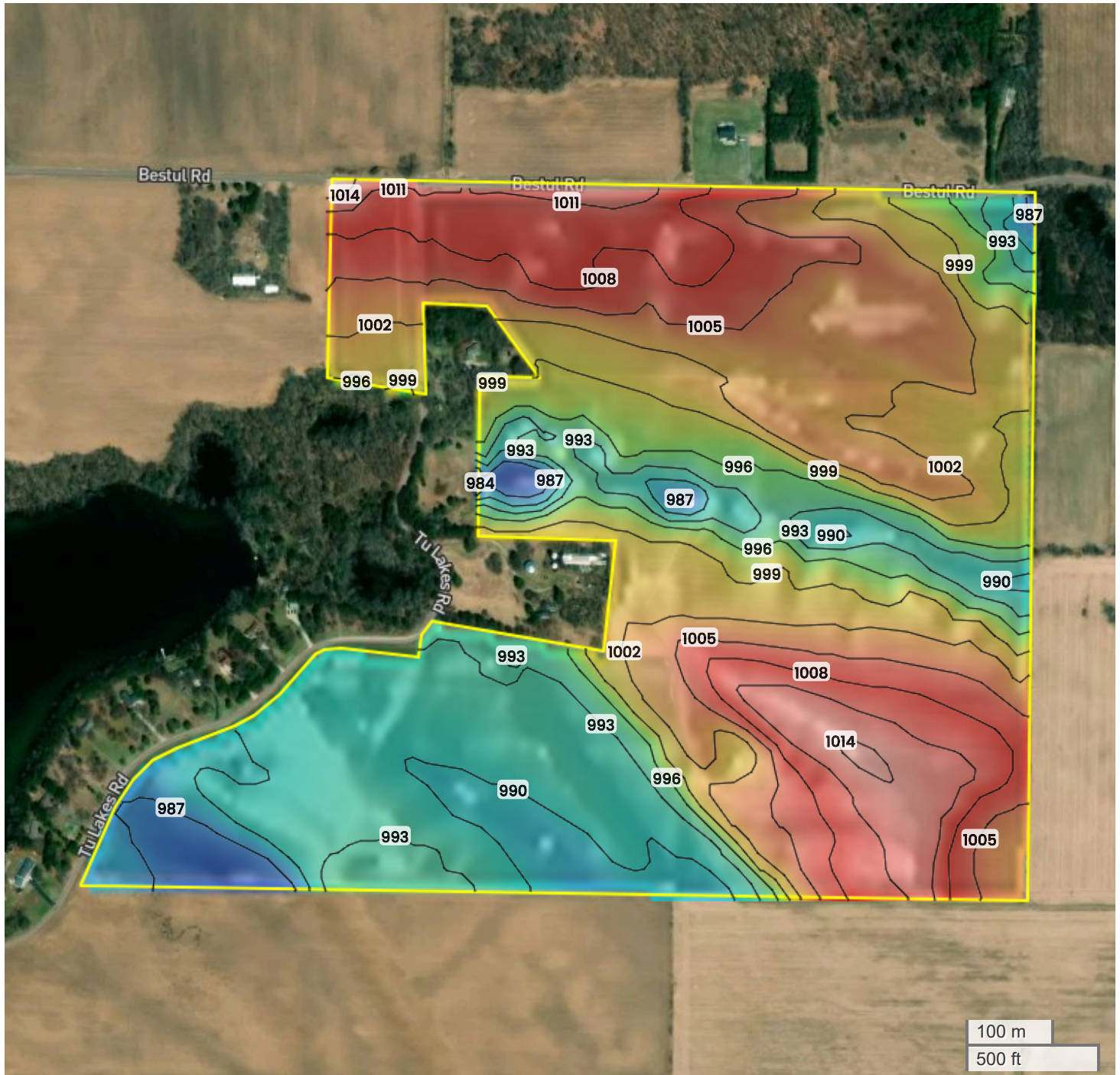
FarmWorth, LLC makes no representations or warranties, express or implied, as to the accuracy of any information, data, numerical values, boundaries, or any other information generated through the use of FarmWorth.com. User is solely responsible for independently investigating and determining all information provided through FarmWorth.com prior to use and waives any and all claims against FarmWorth, LLC for any inaccuracies or inconsistencies in the information and/or data.





TRACT 3 (152.96 AC TOTAL, 148.61 AC TILLABLE)

## TOPOGRAPHY



984 ft

1014 ft



Center: 44.489790, -89.200773

08-23N-11E

Scandinavia Township  
Waupaca County, WI

Source: USGS 10m DEM

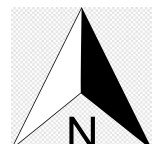
Interval(ft): 3

Max: 1014.0 ft

Min: 984.0 ft

Range: 30.0 ft

Average: 999.0 ft



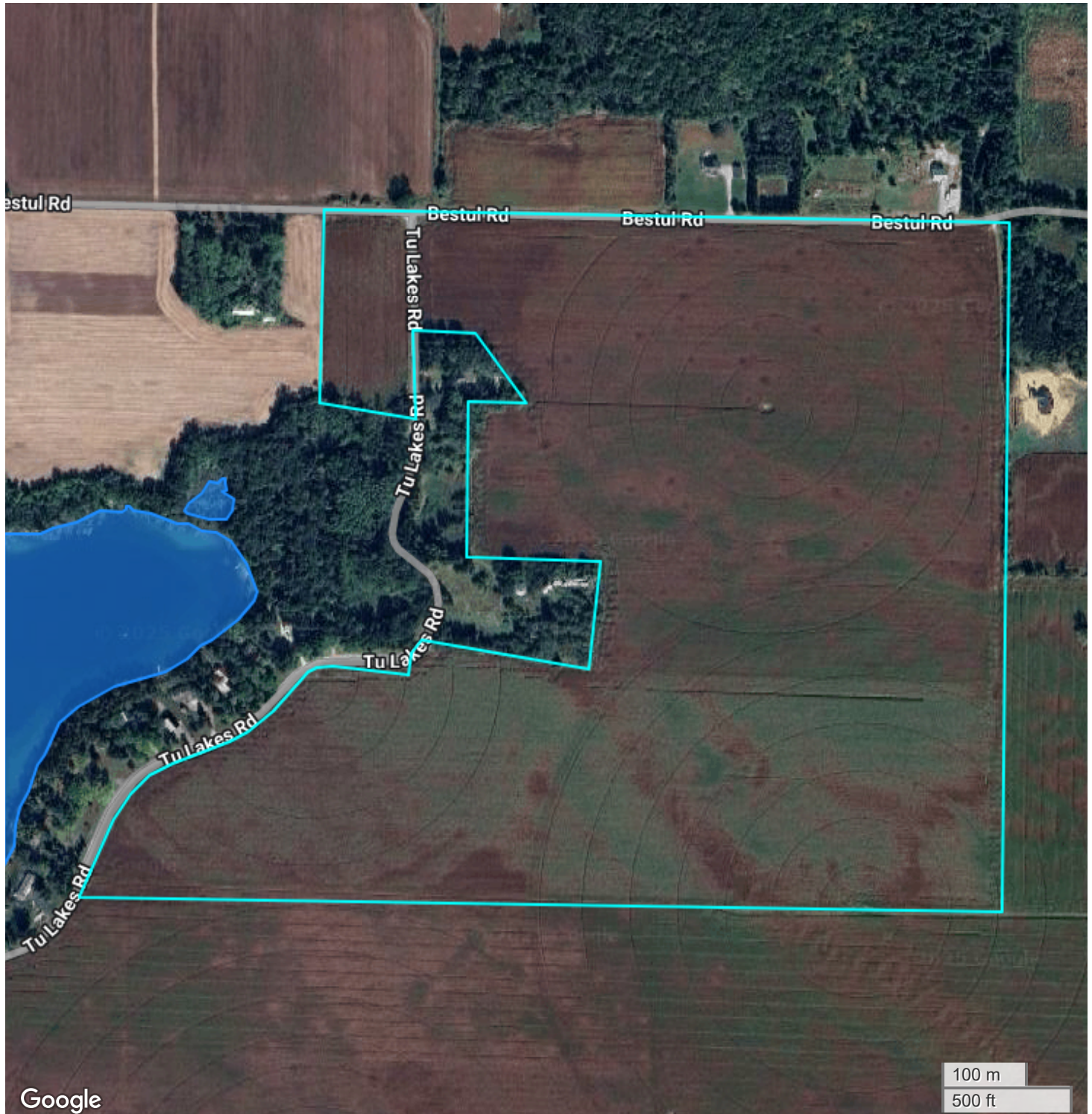
FarmWorth, LLC makes no representations or warranties, express or implied, as to the accuracy of any information, data, numerical values, boundaries, or any other information generated through the use of FarmWorth.com. User is solely responsible for independently investigating and determining all information provided through FarmWorth.com prior to use and waives any and all claims against FarmWorth, LLC for any inaccuracies or inconsistencies in the information and/or data.





TRACT 3 (152.96 AC TOTAL, 148.61 AC TILLABLE)

## FLOOD HAZARDS



FarmWorth, LLC makes no representations or warranties, express or implied, as to the accuracy of any information, data, numerical values, boundaries, or any other information generated through the use of FarmWorth.com. User is solely responsible for independently investigating and determining all information provided through FarmWorth.com prior to use and waives any and all claims against FarmWorth, LLC for any inaccuracies or inconsistencies in the information and/or data.

### Significant Flood Hazards

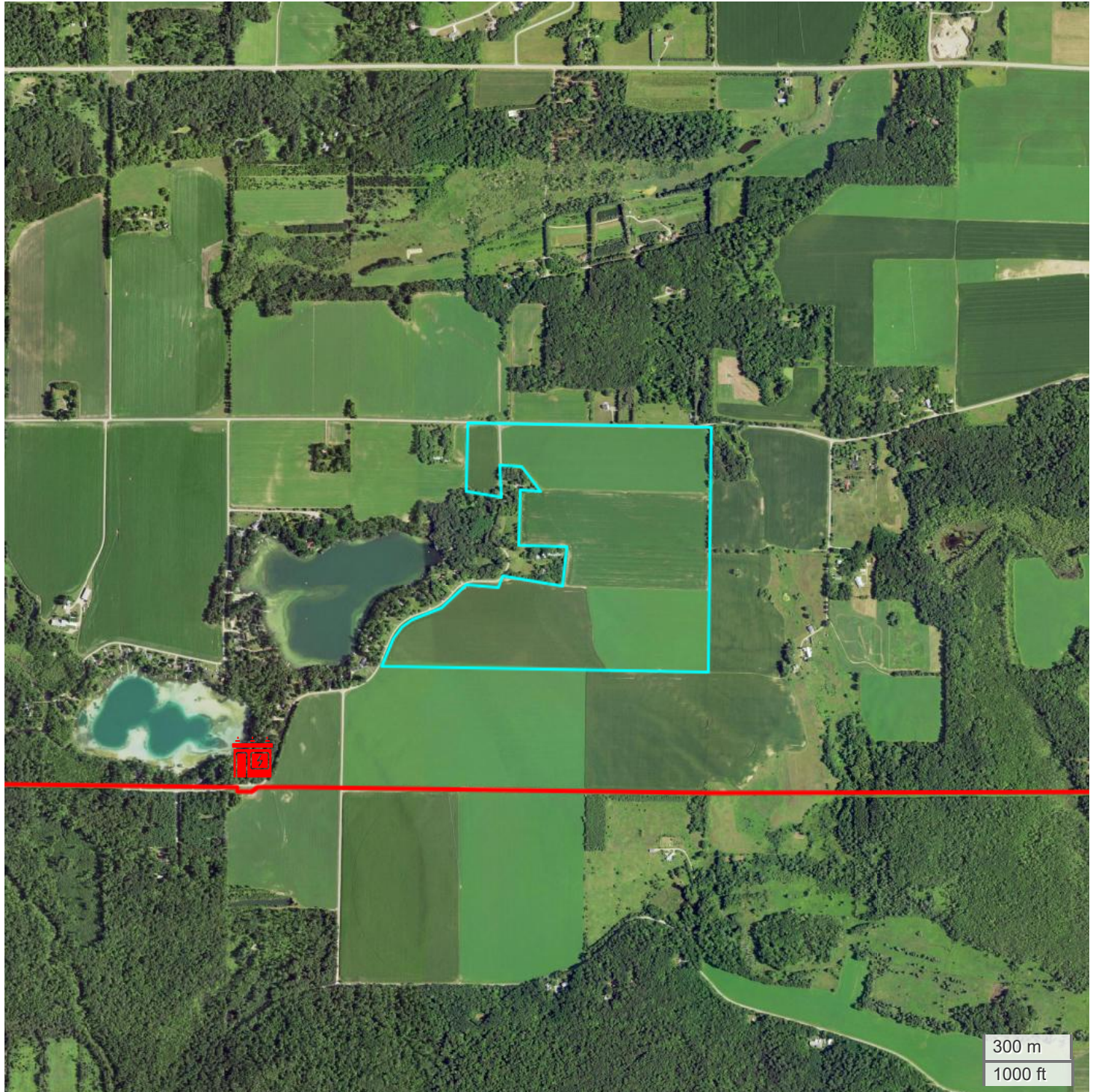
- Regulatory Floodway (Zones AE, AO, AH, VE, AR)
- Without Base Flood Elevation (BFE), with BFE or Depth (Zones A, V, A99)





TRACT 3 (152.96 AC TOTAL, 148.61 AC TILLABLE)

## ENERGY MAP



FarmWorth, LLC makes no representations or warranties, express or implied, as to the accuracy of any information, data, numerical values, boundaries, or any other information generated through the use of FarmWorth.com. User is solely responsible for independently investigating and determining all information provided through FarmWorth.com prior to use and waives any and all claims against FarmWorth, LLC for any inaccuracies or inconsistencies in the information and/or data.

- Transmission Lines
- Substations
- Wind Turbine
- Wind Farm
- Solar
- Oil and Gas (Active)
- Oil and Gas (Abandoned)