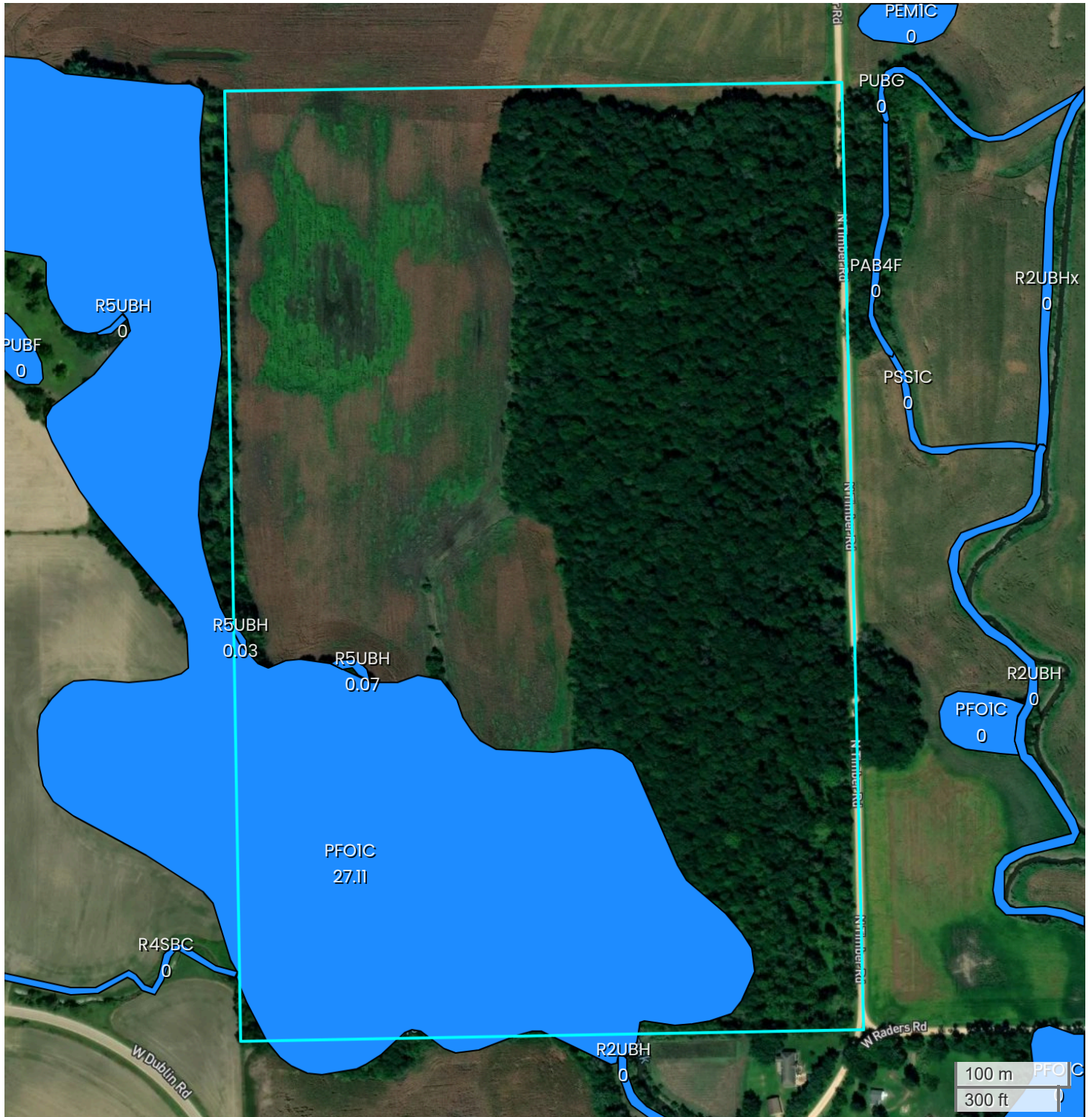




WEST TRACT (107.54 AC TOTAL, 38.01 AC TILLABLE)

WETLANDS



	Classification Code	Type	Area within subject
■	R5UBH	Riverine	0.03 acres
■	R5UBH	Riverine	0.07 acres
■	PFOIC	Freshwater Forested/Shrub Wetland	27.11 acres