

DRAINAGE DISTRICT NO. 37

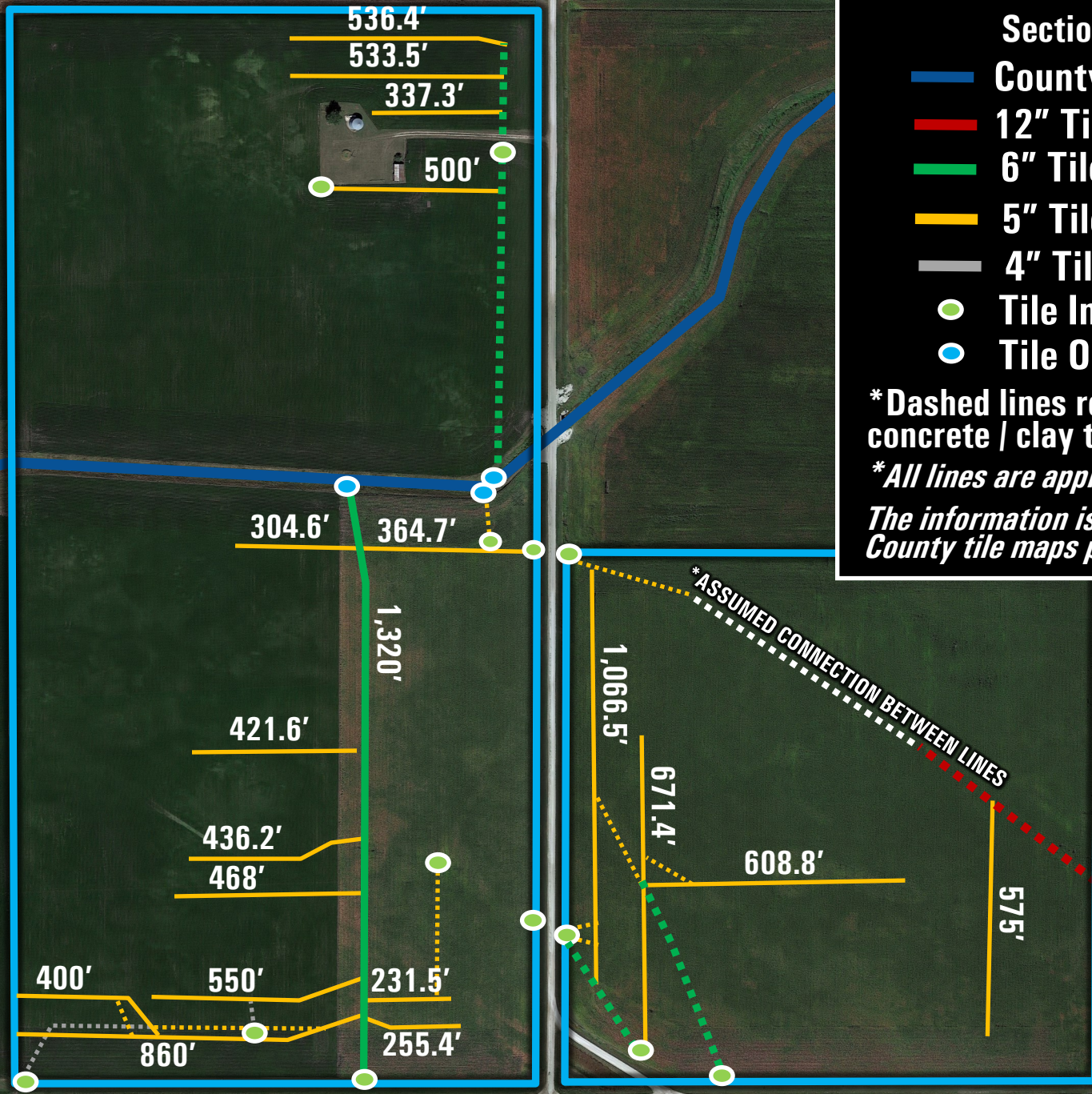
Webster County, Iowa
Lost Grove Township
Section 26 & 27

- County Dredge Ditch
- 12" Tile
- 6" Tile (1,320 feet)
- 5" Tile (9,120.87 feet)
- 4" Tile
- Tile Intake
- Tile Outlet

* Dashed lines represent existing concrete / clay tile

* All lines are approximate.

The information is based off of private & County tile maps provided.



***ALL LINES ARE APPROXIMATE**