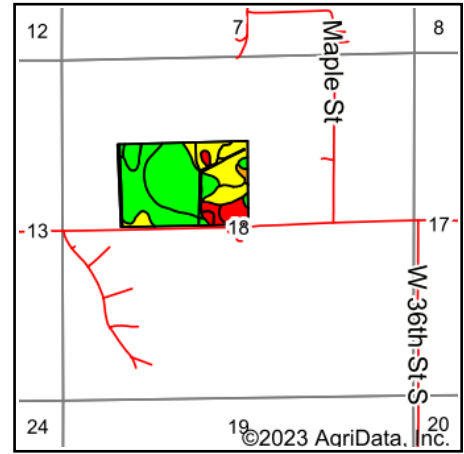
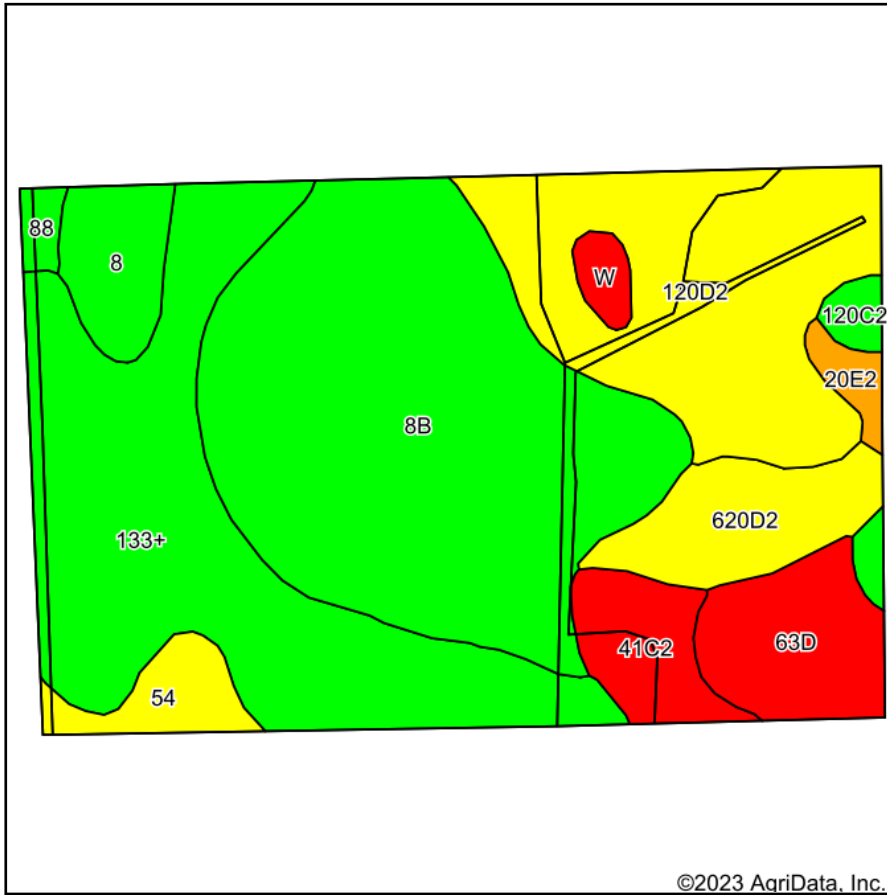


Total Soils Map



State: **Iowa**
 County: **Jasper**
 Location: **18-79N-19W**
 Township: **Palo Alto**
 Acres: **59.11**
 Date: **2/27/2023**



Maps Provided By:



Area Symbol: IA099, Soil Area Version: 28

Code	Soil Description	Acres	Percent of field	CSR2 Legend	Non-Irr Class *c	*i Corn Bu	*i Soybeans Bu	CSR2**	CSR	*n NCCPI Overall
8B	Judson silty clay loam, 2 to 5 percent slopes	19.48	33.0%		Ile	230.4	66.8	93	90	95
133+	Colo silt loam, 0 to 2 percent slopes, occasionally flooded, overwash	14.65	24.8%		IIw	204.8	59.4	78	85	82
120D2	Tama silty clay loam, 9 to 14 percent slopes, eroded	10.35	17.5%		IIIle	169.6	49.2	62	66	85
63D	Chelsea loamy fine sand, 9 to 14 percent slopes	3.31	5.6%		VIIs	88.0	25.5	5	11	30
620D2	Port Byron silt loam, 9 to 14 percent slopes, moderately eroded	3.26	5.5%		IIIle	177.6	51.5	59	65	82
41C2	Sparta loamy fine sand, 5 to 9 percent slopes, moderately eroded	2.21	3.7%		IVIs	120.0	34.8	30	25	31
8	Judson silt loam, 0 to 2 percent slopes	2.02	3.4%		Ile	232.0	67.3	98	95	95
54	Zook silty clay loam, 0 to 2 percent slopes, occasionally flooded	1.49	2.5%		IIw	177.6	51.5	60	70	61
120C2	Tama silty clay loam, 5 to 9 percent slopes, eroded	0.77	1.3%		IIIle	211.2	61.2	87	76	89
20E2	Killduff silty clay loam, 14 to 18 percent slopes, eroded	0.61	1.0%		IVe	153.6	44.5	44	53	78
W	Water	0.54	0.9%			0.0	0.0	0	0	
88	Nevin silty clay loam, 0 to 2 percent slopes	0.42	0.7%		Is	227.2	65.9	92	90	96
Weighted Average						*- 193.9	56.2	72.6	74.6	*n 81.3

**IA has updated the CSR values for each county to CSR2.

*i Yield data provided by the ISPAID Database version 8.1.1 developed by IA State University.

*n: The aggregation method is "Weighted Average using all components"

*c: Using Capabilities Class Dominant Condition Aggregation Method

*- Non Irr Class weighted average cannot be calculated on the current soils data due to missing data.

Soils data provided by USDA and NRCS.