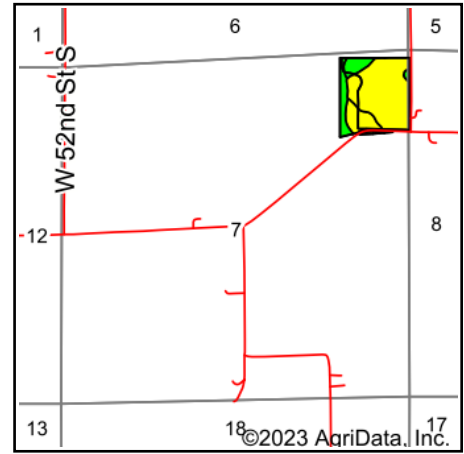
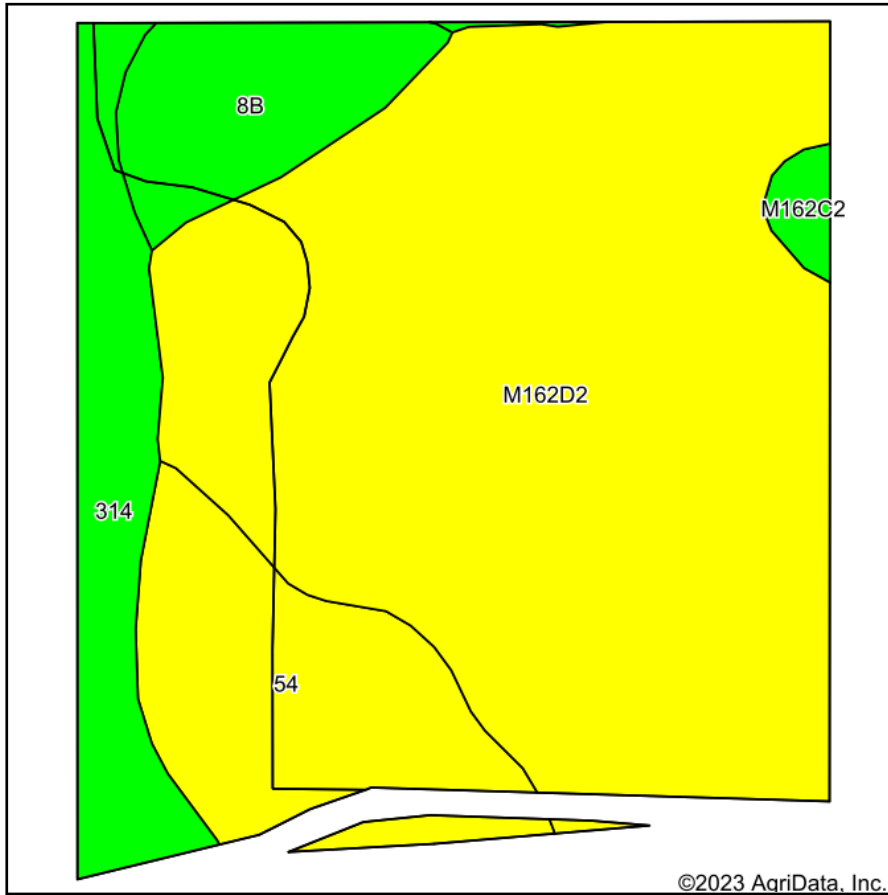


# Total Soils Map



State: **Iowa**  
 County: **Jasper**  
 Location: **7-79N-19W**  
 Township: **Palo Alto**  
 Acres: **29.02**  
 Date: **2/27/2023**

**PC PEOPLES**  
 COMPANY  
 INNOVATIVE. REAL ESTATE. SOLUTIONS.

Maps Provided By:

**surety**  
 CUSTOMIZED ONLINE MAPPING  
 © AgriData, Inc. 2021 www.AgriDataInc.com



Area Symbol: IA099, Soil Area Version: 28

| Code             | Soil Description   | Acres | Percent of field | CSR2 Legend | Non-Irr Class *c | *i Corn Bu | *i Soybeans Bu | CSR2** | CSR | *n NCCPI Overall |
|------------------|--|-------|------------------|-------------|------------------|------------|----------------|--------|-----|------------------|
| M162D2           | Downs silt loam, till plain, 9 to 14 percent slopes, eroded              | 19.54 | 67.3%            |             | IVe              | 0.0        | 0.0            | 57     |     | 81               |
| 54               | Zook silty clay loam, 0 to 2 percent slopes, occasionally flooded        | 4.04  | 13.9%            |             | IIw              | 177.6      | 51.5           | 60     | 70  | 61               |
| 314              | Lawson-Nodaway-Colo Complex, 0 to 2 percent slopes, occasionally flooded | 2.95  | 10.2%            |             | IIw              | 80.0       | 23.2           | 77     | 75  | 89               |
| 8B               | Judson silty clay loam, 2 to 5 percent slopes                            | 2.18  | 7.5%             |             | Ile              | 230.4      | 66.8           | 93     | 90  | 95               |
| M162C2           | Downs silt loam, till plain, 5 to 9 percent slopes, eroded               | 0.31  | 1.1%             |             | IIIe             | 0.0        | 0.0            | 82     |     | 85               |
| Weighted Average |  |       |                  |             | 3.36             | 50.2       | 14.5           | 62.4   | *   | *n 80.1          |

\*\*IA has updated the CSR values for each county to CSR2.

\*- CSR weighted average cannot be calculated on the current soils data, use prior data version for csr values.

\*i Yield data provided by the ISPAID Database version 8.1.1 developed by IA State University.

\*n: The aggregation method is "Weighted Average using all components"

\*c: Using Capabilities Class Dominant Condition Aggregation Method

Soils data provided by USDA and NRCS.