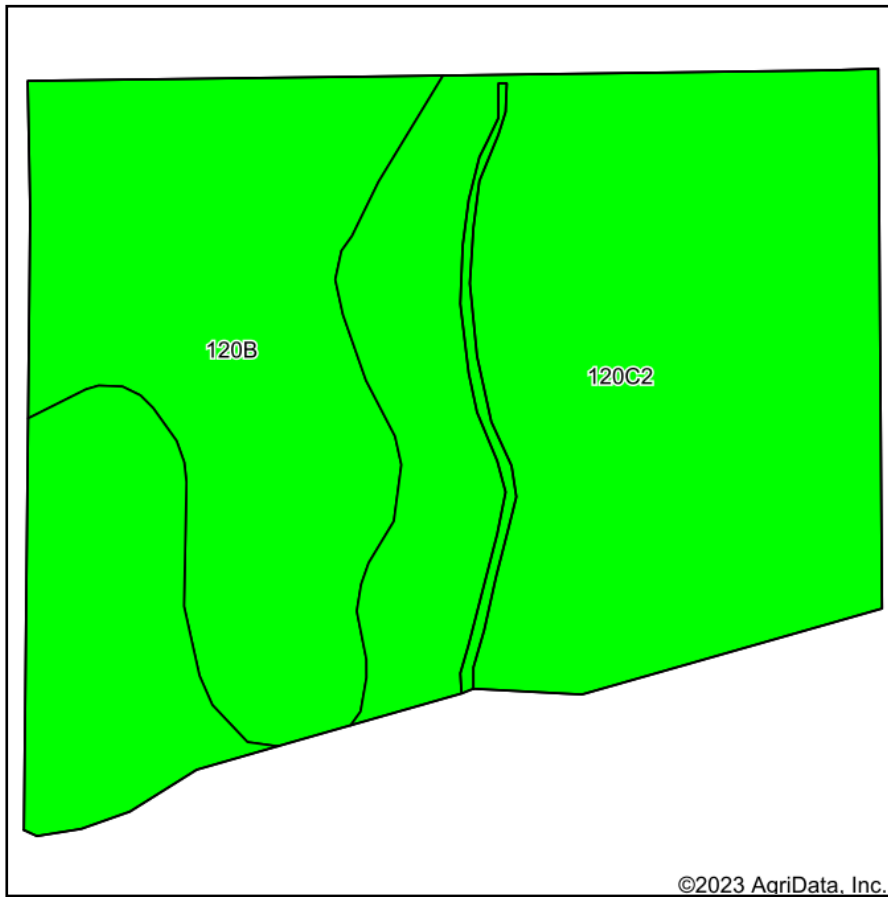
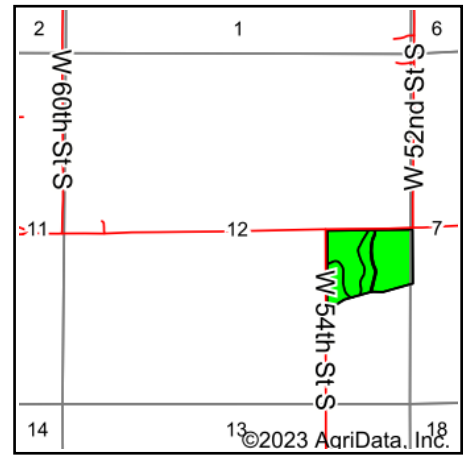


Total Soils Map



Soils data provided by USDA and NRCS.



State: **Iowa**
 County: **Jasper**
 Location: **12-79N-20W**
 Township: **Mound Prairie**
 Acres: **28.51**
 Date: **2/28/2023**



Maps Provided By:



© AgriData, Inc. 2021

www.AgriDataInc.com



Area Symbol: IA099, Soil Area Version: 28

Code	Soil Description	Acres	Percent of field	CSR2 Legend	Non-Irr Class *c	*i Corn Bu	*i Soybeans Bu	CSR2**	CSR	*n NCCPI Overall
120C2	Tama silty clay loam, 5 to 9 percent slopes, eroded	19.47	68.3%		IIIe	211.2	61.2	87	76	89
120B	Tama silty clay loam, 2 to 5 percent slopes	9.04	31.7%		Ile	232.0	67.3	95	93	97
Weighted Average					2.68	217.8	63.1	89.5	81.4	*n 91.5

**IA has updated the CSR values for each county to CSR2.

*i Yield data provided by the ISPAID Database version 8.1.1 developed by IA State University.

*n: The aggregation method is "Weighted Average using all components"

*c: Using Capabilities Class Dominant Condition Aggregation Method

Soils data provided by USDA and NRCS.