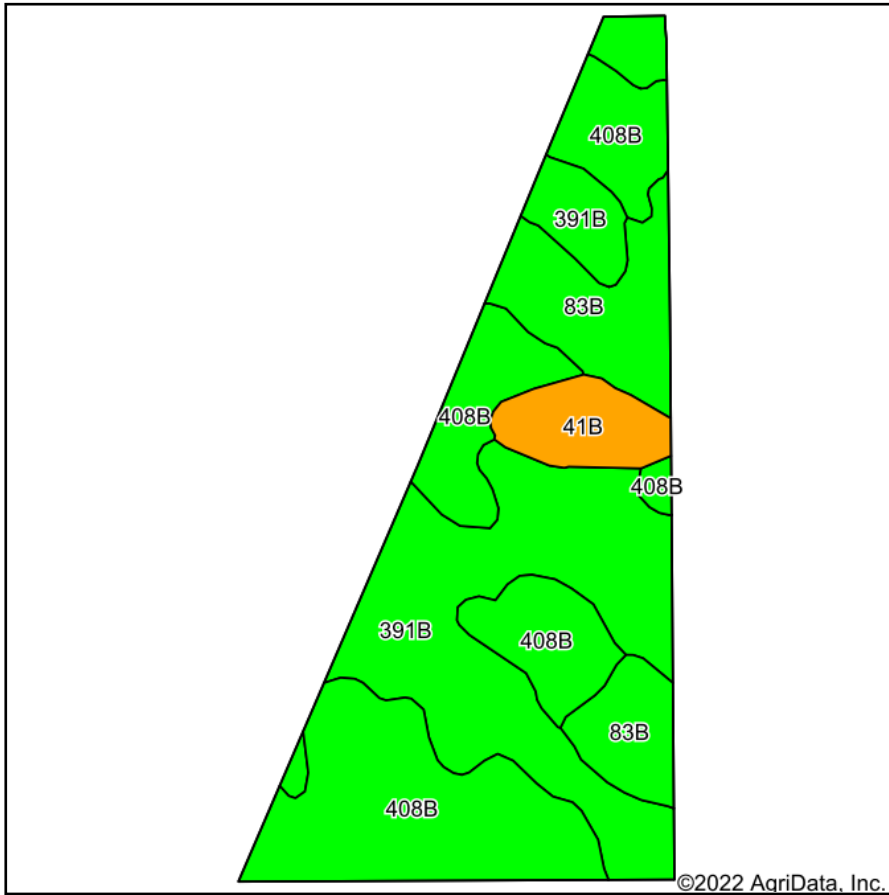
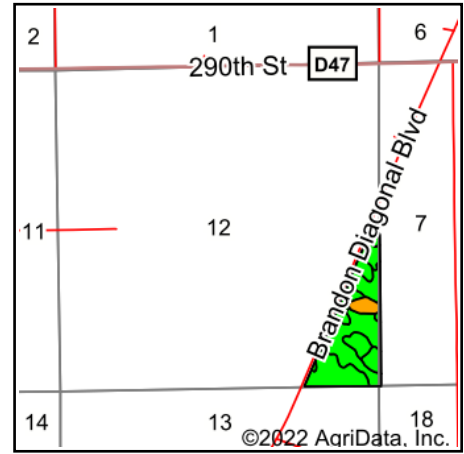


Tract 2 Tillable Soils Map



Soils data provided by USDA and NRCS.



State: **Iowa**
 County: **Buchanan**
 Location: **12-87N-10W**
 Township: **Jefferson**
 Acres: **40.9**
 Date: **11/4/2022**



Maps Provided By:



© AgriData, Inc. 2021

www.AgriDataInc.com



Area Symbol: IA019, Soil Area Version: 27

| Code | Soil Description | Acres | Percent of field | CSR2 Legend | Non-Irr Class *c | CSR2** |
|-------------------------|-----------------------------------------------|-------|------------------|-------------|------------------|-------------|
| 408B | Olin fine sandy loam, 2 to 5 percent slopes | 16.58 | 40.5% | | Ile | 74 |
| 391B | Clyde-Floyd complex, 1 to 4 percent slopes | 15.59 | 38.1% | | Ilw | 87 |
| 83B | Kenyon loam, 2 to 5 percent slopes | 6.33 | 15.5% | | Ile | 90 |
| 41B | Sparta loamy fine sand, 2 to 5 percent slopes | 2.40 | 5.9% | | IVs | 39 |
| Weighted Average | | | | | 2.12 | 79.4 |

**IA has updated the CSR values for each county to CSR2.

*c: Using Capabilities Class Dominant Condition Aggregation Method

Soils data provided by USDA and NRCS.