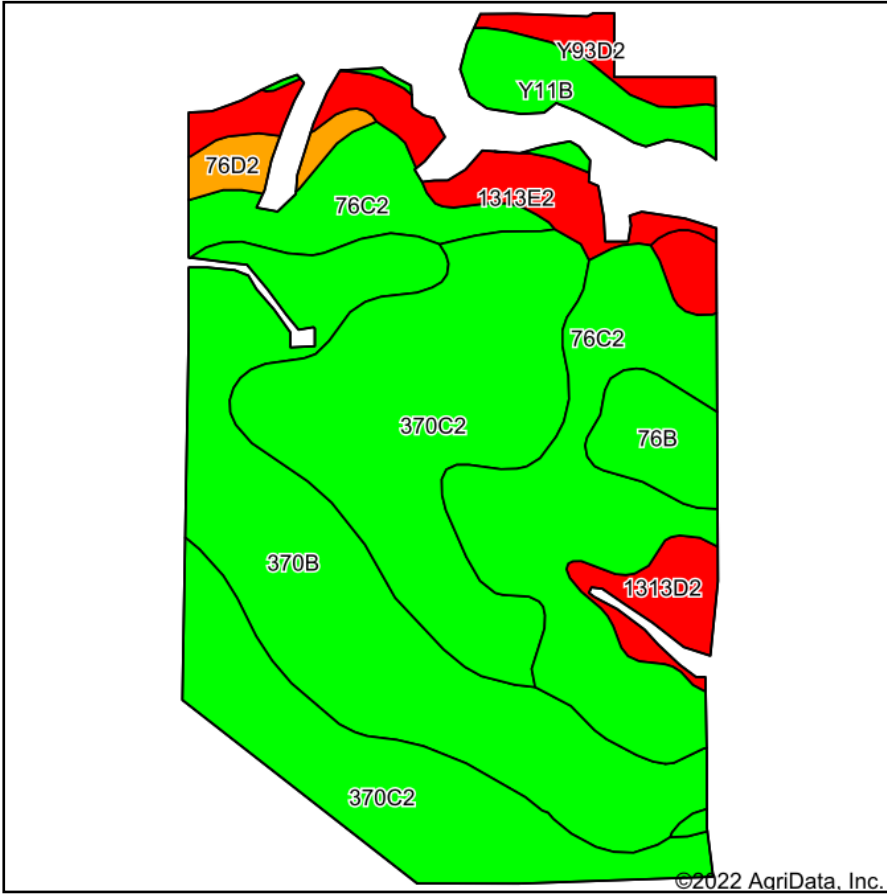
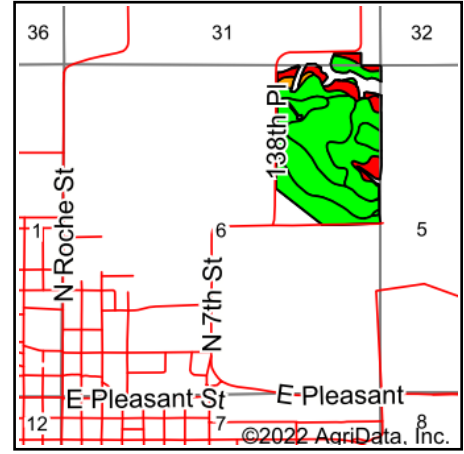


# Soils Map



Soils data provided by USDA and NRCS.

©2022 AgriData, Inc.



State: **Iowa**  
 County: **Marion**  
 Location: **6-75N-19W**  
 Township: **Knoxville**  
 Acres: **83.28**  
 Date: **10/20/2022**



Maps Provided By:



© AgriData, Inc. 2021

www.AgriDataInc.com



Area Symbol: IA125, Soil Area Version: 30

Code	Soil Description	Acres	Percent of field	CSR2 Legend	Non-Irr Class *c	CSR2**
370C2	Sharpsburg silty clay loam, 5 to 9 percent slopes, eroded	27.99	33.6%	<span style="background-color: #00FF00; border: 1px solid black; display: inline-block; width: 15px; height: 15px;"></span>	IIIe	80
370B	Sharpsburg silty clay loam, 2 to 5 percent slopes	20.54	24.7%	<span style="background-color: #00FF00; border: 1px solid black; display: inline-block; width: 15px; height: 15px;"></span>	IIe	91
76C2	Ladoga silt loam, 5 to 9 percent slopes, eroded	17.91	21.5%	<span style="background-color: #00FF00; border: 1px solid black; display: inline-block; width: 15px; height: 15px;"></span>	IIIe	75
1313E2	Munterville silt loam, 14 to 18 percent slopes, moderately eroded	4.42	5.3%	<span style="background-color: #FF0000; border: 1px solid black; display: inline-block; width: 15px; height: 15px;"></span>	VIe	22
Y11B	Colo, occasionally flooded-Ely silty clay loams, dissected till plain, 2 to 5 percent slopes	3.43	4.1%	<span style="background-color: #00FF00; border: 1px solid black; display: inline-block; width: 15px; height: 15px;"></span>	IIw	80
1313D2	Munterville silt loam, 9 to 14 percent slopes, moderately eroded	3.32	4.0%	<span style="background-color: #FF0000; border: 1px solid black; display: inline-block; width: 15px; height: 15px;"></span>	VIe	34
76B	Ladoga silt loam, 2 to 5 percent slopes	2.80	3.4%	<span style="background-color: #00FF00; border: 1px solid black; display: inline-block; width: 15px; height: 15px;"></span>	IIe	86
Y93D2	Shelby-Adair clay loams, dissected till plain, 9 to 14 percent slopes, eroded	1.47	1.8%	<span style="background-color: #FF0000; border: 1px solid black; display: inline-block; width: 15px; height: 15px;"></span>	IIIe	35
76D2	Ladoga silt loam, 9 to 14 percent slopes, eroded	1.40	1.7%	<span style="background-color: #FFA500; border: 1px solid black; display: inline-block; width: 15px; height: 15px;"></span>	IIIe	49
<b>Weighted Average</b>					<b>2.96</b>	<b>75.6</b>

\*\*IA has updated the CSR values for each county to CSR2.

\*c: Using Capabilities Class Dominant Condition Aggregation Method

Soils data provided by USDA and NRCS.