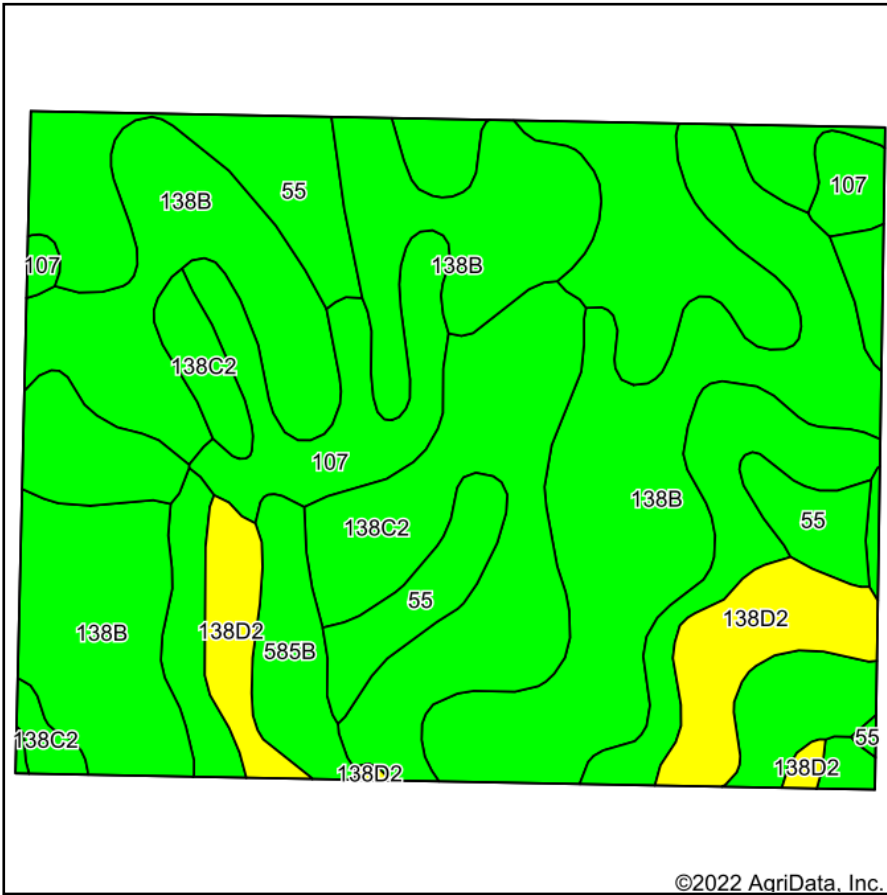
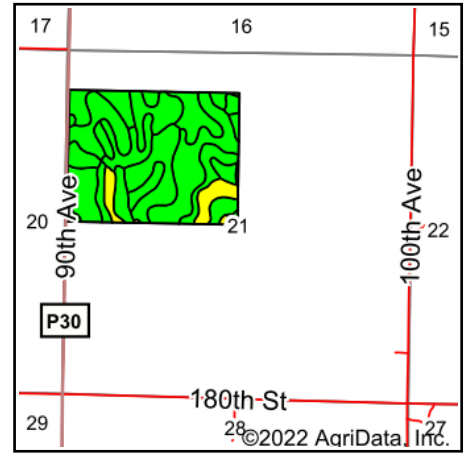


Soils Map - Total Acres



Soils data provided by USDA and NRCS.



State: **Iowa**
 County: **Kossuth**
 Location: **21-95N-29W**
 Township: **Cresco**
 Acres: **118.95**
 Date: **6/30/2022**



Maps Provided By:



Area Symbol: IA109, Soil Area Version: 28

Code	Soil Description	Acres	Percent of field	CSR2 Legend	Non-Irr Class *c	*i Corn Bu	*i Alfalfa Tons	*i Soybeans Bu	CSR2**	*n NCCPI Overall	
138B	Clarion loam, 2 to 6 percent slopes	46.26	38.9%		Ile	225.6	6.3	65.4	89	84	
55	Nicollet clay loam, 1 to 3 percent slopes	25.04	21.1%		Iw	233.6	6.1	67.7	89	82	
138C2	Clarion loam, 6 to 10 percent slopes, moderately eroded	24.56	20.6%		IIle	204.8	5.7	59.4	83	73	
107	Webster clay loam, 0 to 2 percent slopes	8.38	7.0%		IIw	224.0	4.7	65.0	86	83	
138D2	Clarion loam, 9 to 14 percent slopes, moderately eroded	7.93	6.7%		IIIle	176.0	4.9	51.0	51	69	
585B	Colo-Spillville complex, 2 to 5 percent slopes	6.78	5.7%		Iw	203.2	4.3	58.9	79	89	
Weighted Average						2.06	218.3	5.8	63.3	84.4	*n 80.5

**IA has updated the CSR values for each county to CSR2.

*i Yield data provided by the ISPAID Database version 8.1.1 developed by IA State University.

*n: The aggregation method is "Weighted Average using all components"

*c: Using Capabilities Class Dominant Condition Aggregation Method

Soils data provided by USDA and NRCS.