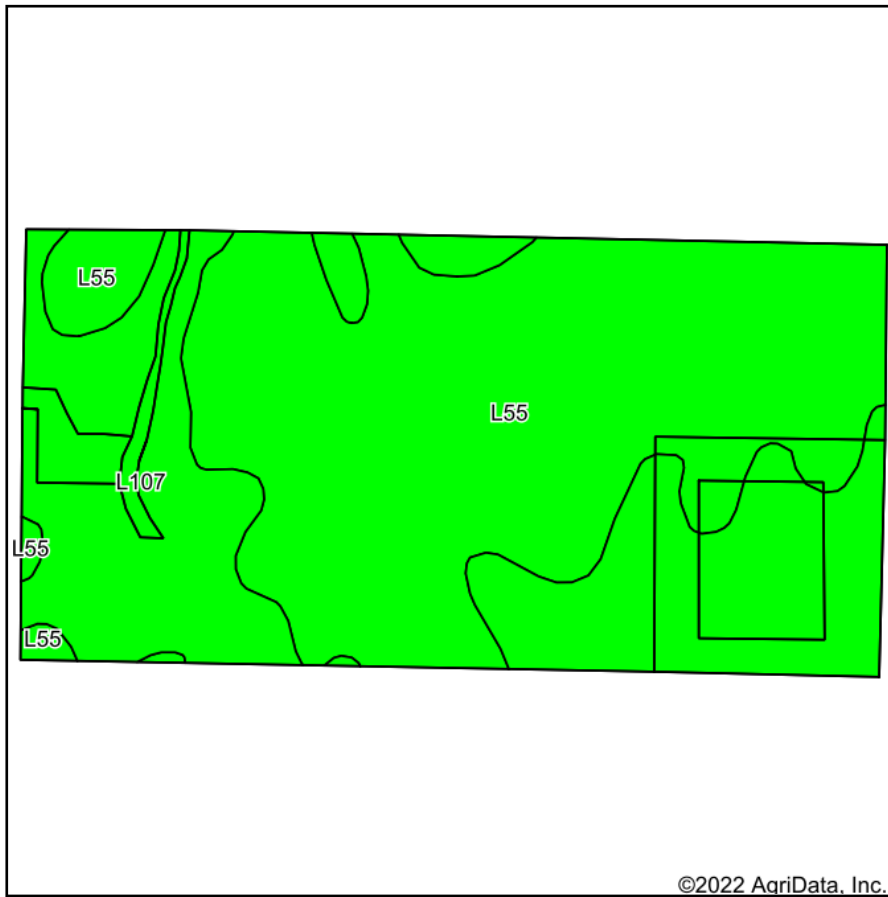
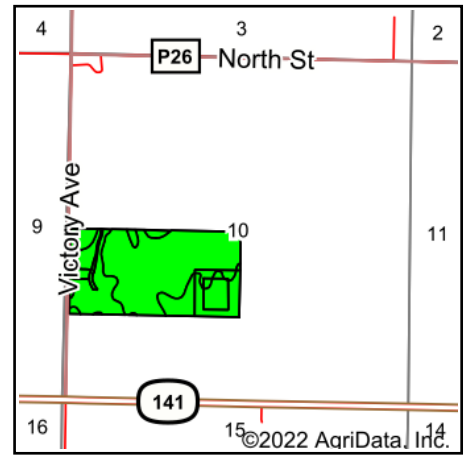


Total Soils Map



Soils data provided by USDA and NRCS.



State: **Iowa**
 County: **Guthrie**
 Location: **10-81N-30W**
 Township: **Richland**
 Acres: **77.62**
 Date: **2/15/2022**

PC PEOPLES
 COMPANY
 INNOVATIVE. REAL ESTATE. SOLUTIONS.

Maps Provided By:

surety
 CUSTOMIZED ONLINE MAPPING
 © AgriData, Inc. 2021 www.AgriDataInc.com



Area Symbol: IA077, Soil Area Version: 30

Code	Soil Description	Acres	Percent of field	CSR2 Legend	Non-Irr Class *c	*i Corn Bu	*i Soybeans Bu	CSR2**	*n NCCPI Overall
L55	Nicollet loam, 1 to 3 percent slopes	46.70	60.2%		le	0	0	91	85
L107	Webster clay loam, Bemis moraine, 0 to 2 percent slopes	30.92	39.8%		llw	0	0	88	84
Weighted Average					1.40	*-	*-	89.8	*n 84.6

**IA has updated the CSR values for each county to CSR2.

*i Yield data provided by the ISPAID Database version 8.1.1 developed by IA State University.

*n: The aggregation method is "Weighted Average using all components"

*c: Using Capabilities Class Dominant Condition Aggregation Method

Soils data provided by USDA and NRCS.