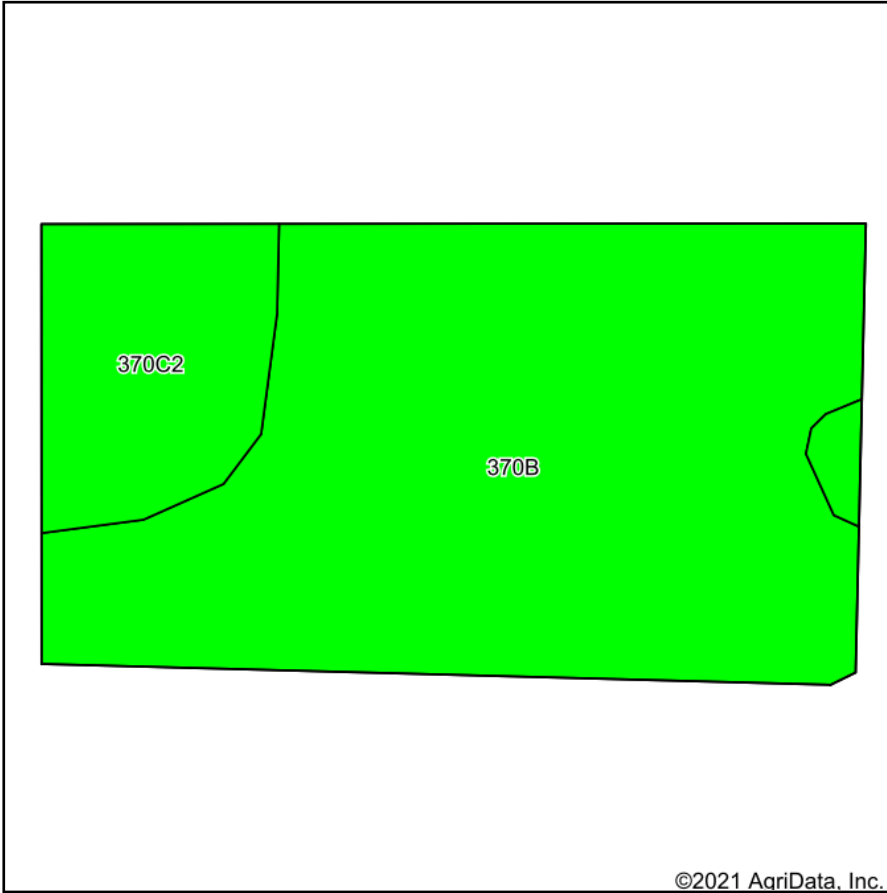
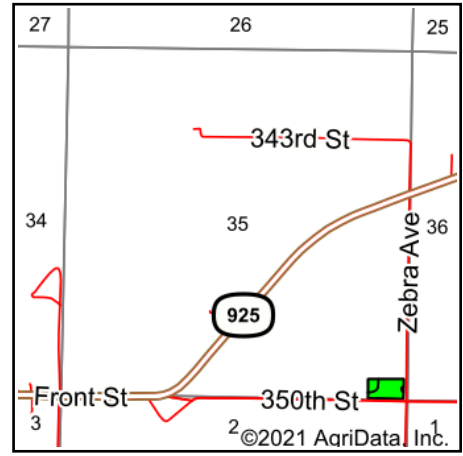


Soils Map



©2021 AgriData, Inc.

Soils data provided by USDA and NRCS.



State: **Iowa**
 County: **Adair**
 Location: **2-77N-30W**
 Township: **Lincoln**
 Acres: **3.72**
 Date: **11/16/2021**



Maps Provided By:



© AgriData, Inc. 2021

www.AgriDataInc.com



Area Symbol: IA077, Soil Area Version: 30

| Code | Soil Description | Acres | Percent of field | CSR2 Legend | Non-Irr Class *c | *i Corn Bu | *i Soybeans Bu | CSR2** | CSR | *n NCCPI Overall | |
|-------------------------|---|-------|------------------|-------------|------------------|-------------|----------------|-------------|-------------|------------------|----------------|
| 370B | Sharpsburg silty clay loam, 2 to 5 percent slopes | 3.02 | 81.2% | | Ile | 225.6 | 65.4 | 91 | 87 | 93 | |
| 370C2 | Sharpsburg silty clay loam, 5 to 9 percent slopes, eroded | 0.70 | 18.8% | | IIle | 204.8 | 59.4 | 80 | 67 | 84 | |
| Weighted Average | | | | | | 2.19 | 221.7 | 64.3 | 88.9 | 83.2 | *n 91.3 |

**IA has updated the CSR values for each county to CSR2.

*i Yield data provided by the ISPAID Database version 8.1.1 developed by IA State University.

*n: The aggregation method is "Weighted Average using all components"

*c: Using Capabilities Class Dominant Condition Aggregation Method

Soils data provided by USDA and NRCS.