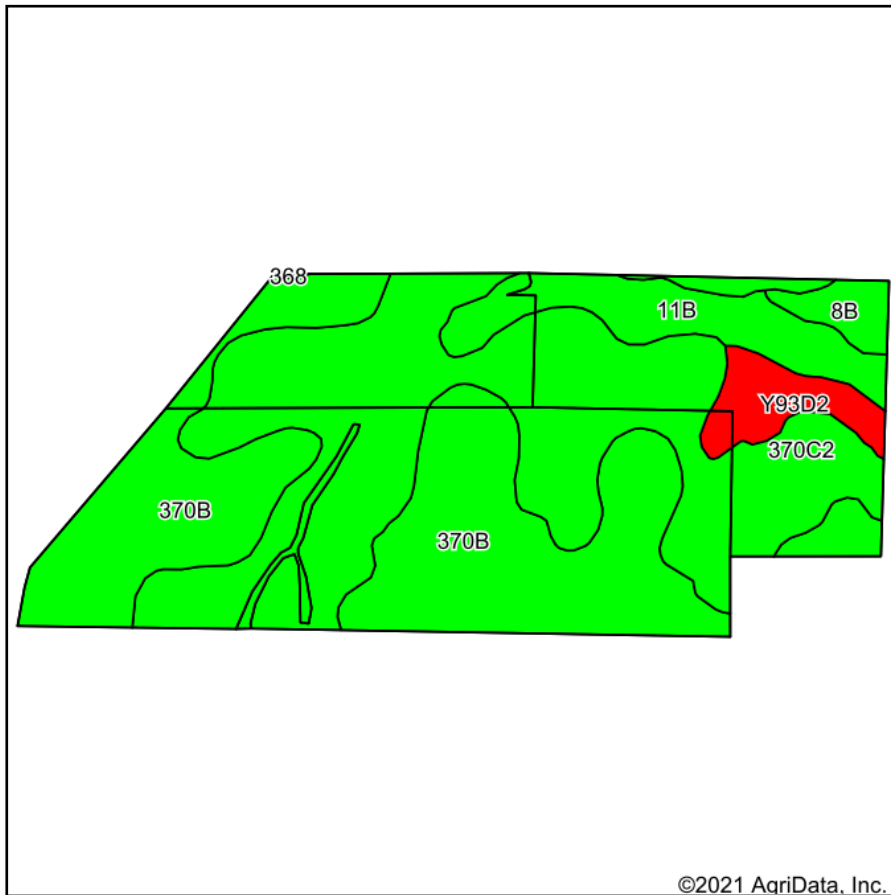
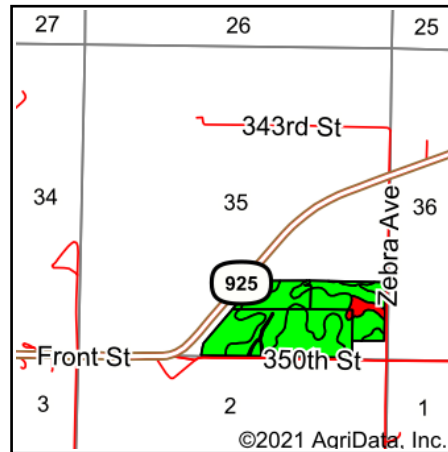


FSA Tillable Soils Map



Soils data provided by USDA and NRCS.



State: **Iowa**
 County: **Guthrie**
 Location: **35-78N-30W**
 Township: **Penn**
 Acres: **77.53**
 Date: **11/16/2021**



Maps Provided By:



Area Symbol: IA077, Soil Area Version: 30

Code	Soil Description	Acres	Percent of field	CSR2 Legend	Non-Irr Class *c	*i Corn Bu	*i Soybeans Bu	CSR2**	CSR	*n NCCPI Overall
370C2	Sharpsburg silty clay loam, 5 to 9 percent slopes, eroded	35.88	46.3%		Ille	204.8	59.4	80	67	84
370B	Sharpsburg silty clay loam, 2 to 5 percent slopes	30.22	39.0%		Ile	225.6	65.4	91	87	93
11B	Colo-Judson silty clay loams, 0 to 5 percent slopes, occasionally flooded	6.64	8.6%		Ilw	216	62.6	80	68	87
Y93D2	Shelby-Adair clay loams, dissected till plain, 9 to 14 percent slopes, eroded	3.18	4.1%		Ille	0	0	35		69
8B	Judson silty clay loam, dissected till plain, 2 to 5 percent slopes	1.61	2.1%		Ile	230.4	66.8	93	82	93
Weighted Average						2.50	206	59.7	82.7	*- *n 87.3

**IA has updated the CSR values for each county to CSR2.

*- CSR weighted average cannot be calculated on the current soils data, use prior data version for csr values.

*i Yield data provided by the ISPAID Database version 8.1.1 developed by IA State University.

*n: The aggregation method is "Weighted Average using all components"

*c: Using Capabilities Class Dominant Condition Aggregation Method

Soils data provided by USDA and NRCS.