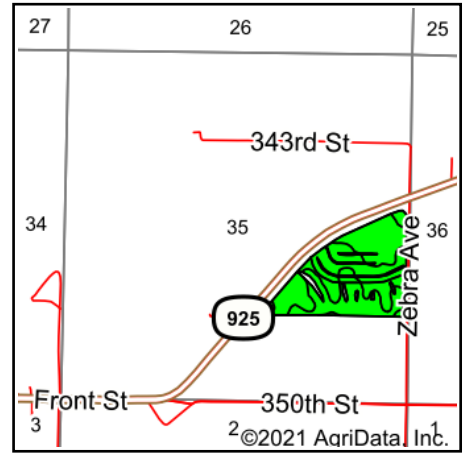
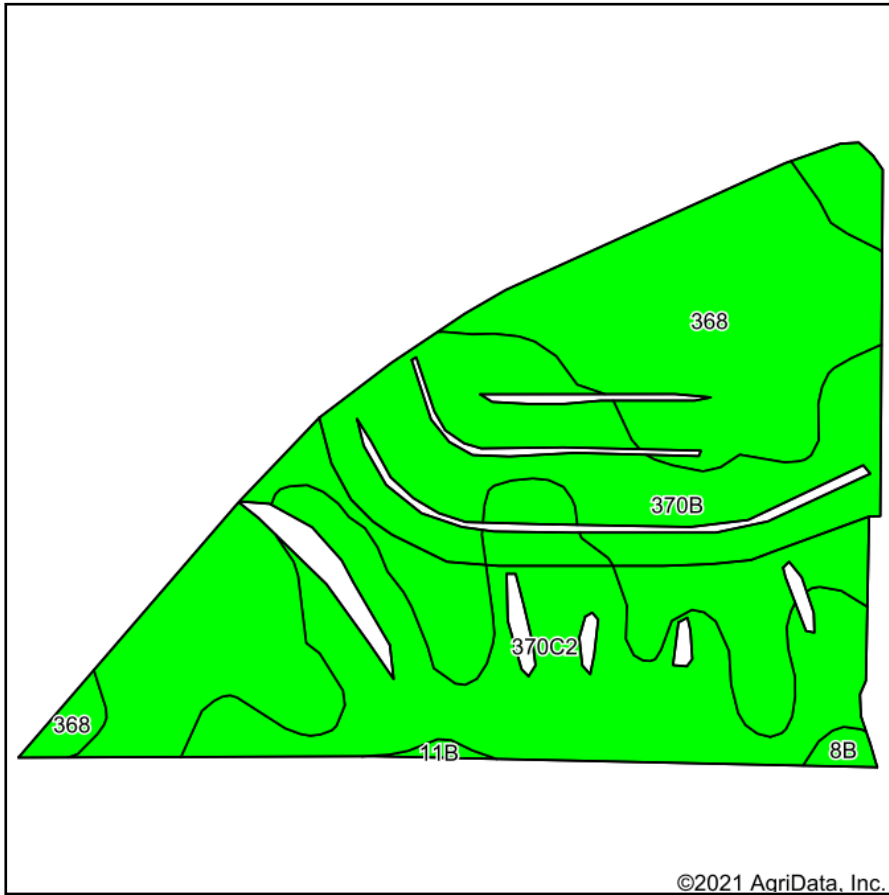


Current Tillable Soils Map



State: **Iowa**
 County: **Guthrie**
 Location: **35-78N-30W**
 Township: **Penn**
 Acres: **48.92**
 Date: **11/16/2021**



Maps Provided By:



Soils data provided by USDA and NRCS.

©2021 AgriData, Inc.

© AgriData, Inc. 2021

www.AgriDataInc.com

Area Symbol: IA077, Soil Area Version: 30

Code	Soil Description	Acres	Percent of field	CSR2 Legend	Non-Irr Class *c	*i Corn Bu	*i Soybeans Bu	CSR2**	CSR	*n NCCPI Overall	
370B	Sharpsburg silty clay loam, 2 to 5 percent slopes	23.10	47.2%		Ile	225.6	65.4	91	87	93	
370C2	Sharpsburg silty clay loam, 5 to 9 percent slopes, eroded	13.53	27.7%		IIle	204.8	59.4	80	67	84	
368	Macksburg silty clay loam, 0 to 2 percent slopes	11.80	24.1%		Iw	230.4	66.8	93	95	87	
8B	Judson silty clay loam, dissected till plain, 2 to 5 percent slopes	0.32	0.7%		Ile	230.4	66.8	93	82	93	
11B	Colo-Judson silty clay loams, 0 to 5 percent slopes, occasionally flooded	0.17	0.3%		IIw	216	62.6	80	68	87	
Weighted Average						2.04	221	64.1	88.4	83.3	*n 89

**IA has updated the CSR values for each county to CSR2.

*i Yield data provided by the ISPAID Database version 8.1.1 developed by IA State University.

*n: The aggregation method is "Weighted Average using all components"

*c: Using Capabilities Class Dominant Condition Aggregation Method

Soils data provided by USDA and NRCS.