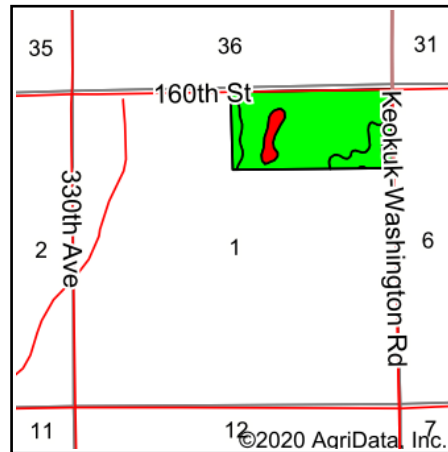
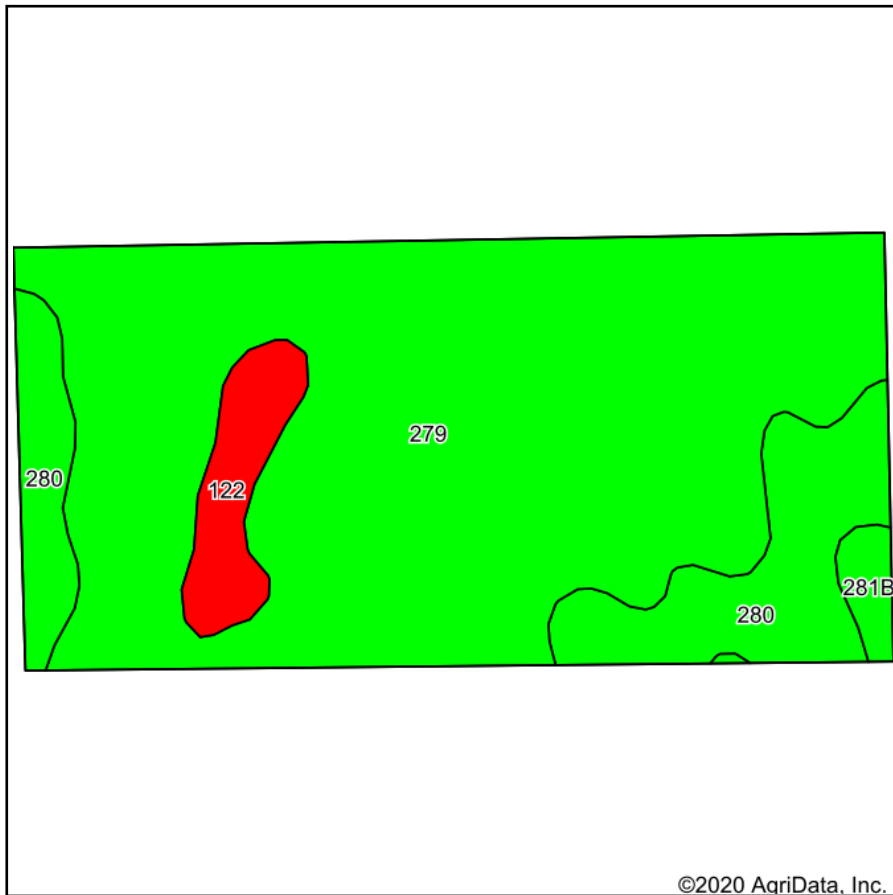


# Total Soils Map



State: **Iowa**  
 County: **Keokuk**  
 Location: **1-76N-10W**  
 Township: **Lafayette**  
 Acres: **79**  
 Date: **10/6/2020**



Maps Provided By:



Soils data provided by USDA and NRCS.

©2020 AgriData, Inc.

© AgriData, Inc. 2020

www.AgriDataInc.com

Area Symbol: IA107. Soil Area Version: 25								
Code	Soil Description	Acres	Percent of field	CSR2 Legend	Non-Irr Class *c	CSR2**	CSR	
279	Taintor silty clay loam, 0 to 2 percent slopes	60.98	77.2%		IIw	83	88	
280	Mahaska silty clay loam, 0 to 2 percent slopes	12.73	16.1%		Iw	94	95	
122	Sperry silt loam, depressional, 0 to 1 percent slopes	3.98	5.0%		IIIw	36	63	
281B	Otley silty clay loam, 2 to 5 percent slopes	1.31	1.7%		Ile	91	90	
<b>Weighted Average</b>						<b>82.5</b>	<b>87.9</b>	

\*\*IA has updated the CSR values for each county to CSR2.

\*c: Using Capabilities Class Dominant Condition Aggregation Method  
 Soils data provided by USDA and NRCS.