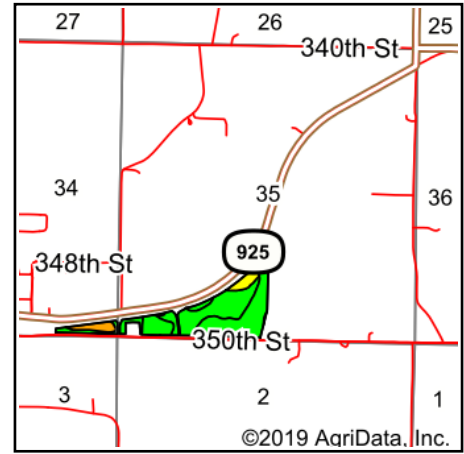
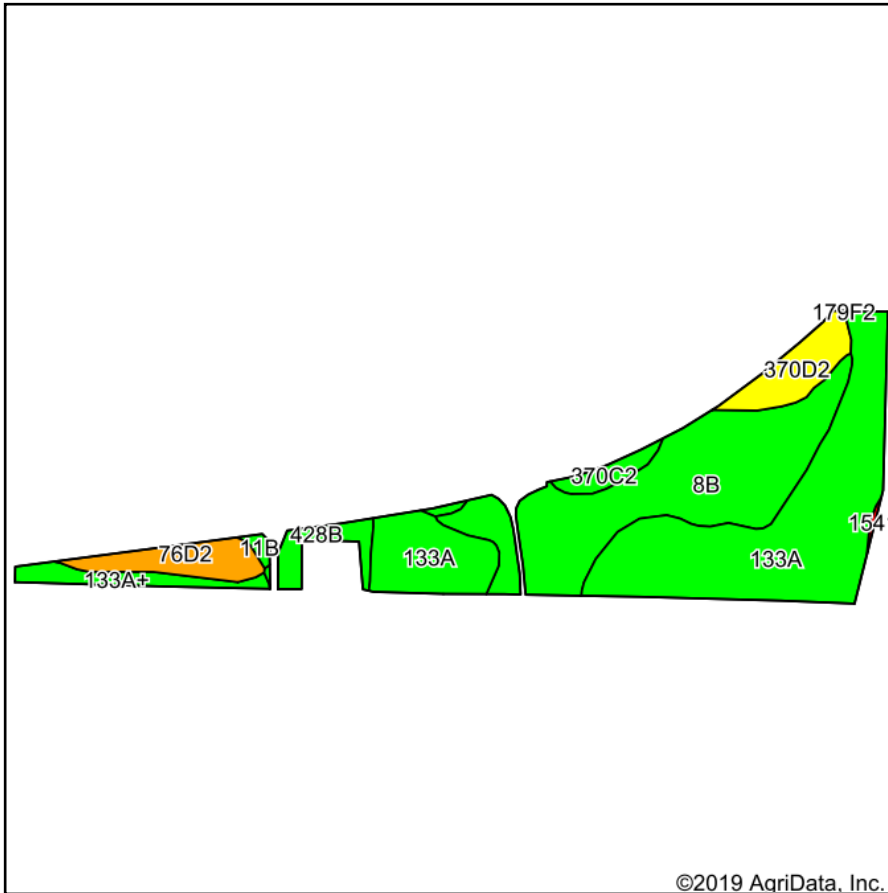


Tillable Soils Map



State: **Iowa**
 County: **Guthrie**
 Location: **35-78N-32W**
 Township: **Thompson**
 Acres: **40.83**
 Date: **10/9/2019**



Maps Provided By:



Soils data provided by USDA and NRCS.

©2019 AgriData, Inc.

© AgriData, Inc. 2019

www.AgriDataInc.com

Area Symbol: IA077, Soil Area Version: 26									
Code	Soil Description	Acres	Percent of field	CSR2 Legend	Non-Irr Class *c	CSR2**	CSR	*n NCCPI Overall	
133A	Colo silty clay loam, deep loess, 0 to 2 percent slopes, occasionally flooded	18.06	44.2%		Ilw	78	80	95	
8B	Judson silty clay loam, dissected till plain, 2 to 5 percent slopes	13.98	34.2%		Ile	93	82	90	
370D2	Sharpsburg silty clay loam, 9 to 14 percent slopes, eroded	2.39	5.9%		Ille	54	57	68	
76D2	Ladoga silt loam, 9 to 14 percent slopes, eroded	2.25	5.5%		Ille	49	52	61	
133A+	Colo silt loam, deep loess, 0 to 2 percent slopes, overwash, occasionally flooded	1.47	3.6%		Ilw	78	85	95	
428B	Ely silty clay loam, dissected till plain, 2 to 5 percent slopes	1.36	3.3%		Ile	88	84	96	
370C2	Sharpsburg silty clay loam, 5 to 9 percent slopes, eroded	1.02	2.5%		Ille	80	67	71	
11B	Colo-Judson silty clay loams, 0 to 5 percent slopes, occasionally flooded	0.23	0.6%		Ilw	80	68	95	
1541	Quiver-Colo silty clay loams, 0 to 2 percent slopes, frequently flooded	0.07	0.2%		Vw	12		31	
Weighted Average						80.4	*-	*n 89.2	

**IA has updated the CSR values for each county to CSR2.

*- CSR weighted average cannot be calculated on the current soils data, use prior data version for csr values.

*n: The aggregation method is "Weighted Average using major components"

*c: Using Capabilities Class Dominant Condition Aggregation Method

Soils data provided by USDA and NRCS.