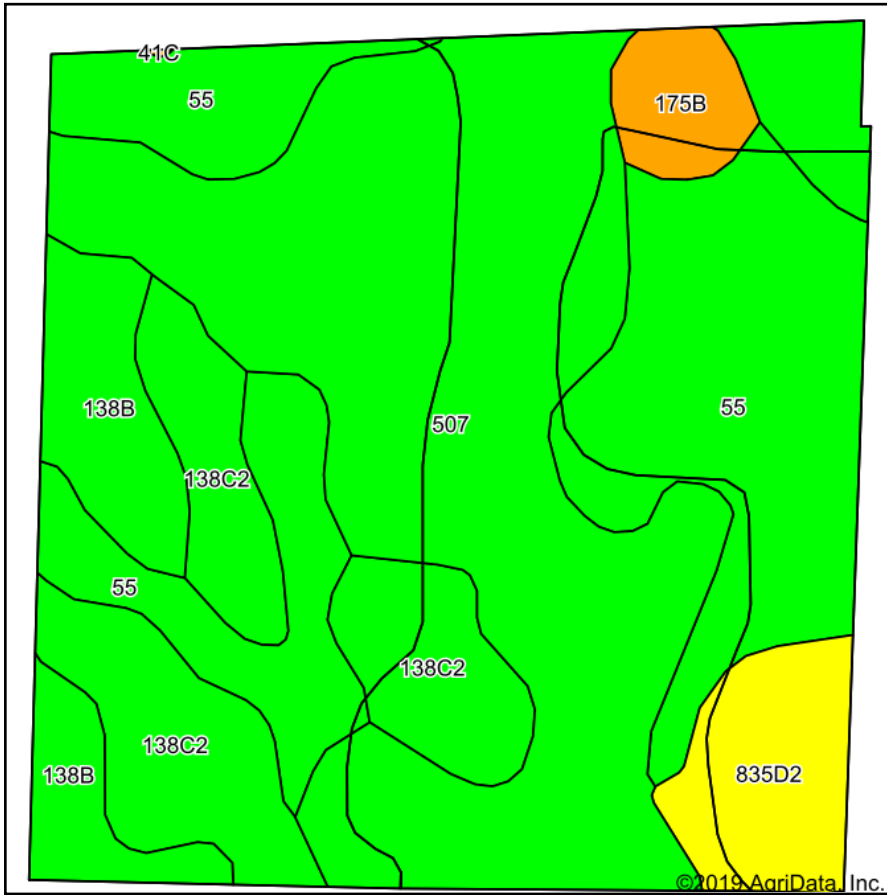
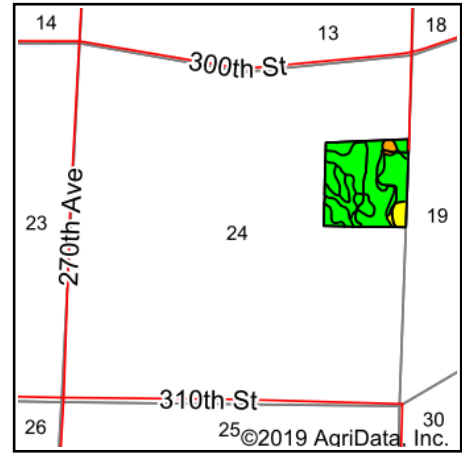


Soils Map



Soils data provided by USDA and NRCS.



State: **Iowa**
 County: **Clay**
 Location: **24-97N-36W**
 Township: **Meadow**
 Acres: **37**
 Date: **9/3/2019**



Maps Provided By:



© AgriData, Inc. 2019

www.AgriDataInc.com



Area Symbol: IA041, Soil Area Version: 28							
Code	Soil Description	Acres	Percent of field	CSR2 Legend	Non-Irr Class *c	CSR2**	CSR
507	Canisteo clay loam, 0 to 2 percent slopes	15.71	42.5%		IIw	84	73
55	Nicollet clay loam, 1 to 3 percent slopes	10.14	27.4%		Iw	89	82
138C2	Clarion loam, 6 to 10 percent slopes, moderately eroded	5.39	14.6%		IIIe	83	59
138B	Clarion loam, 2 to 6 percent slopes	2.74	7.4%		Ile	89	74
835D2	Omsrud-Storden complex, 10 to 16 percent slopes, moderately eroded	2.06	5.6%		IVe	53	46
175B	Dickinson fine sandy loam, 2 to 5 percent slopes	0.96	2.6%		IIIe	47	36
Weighted Average						82.9	71

**IA has updated the CSR values for each county to CSR2.

*c: Using Capabilities Class Dominant Condition Aggregation Method
 Soils data provided by USDA and NRCS.