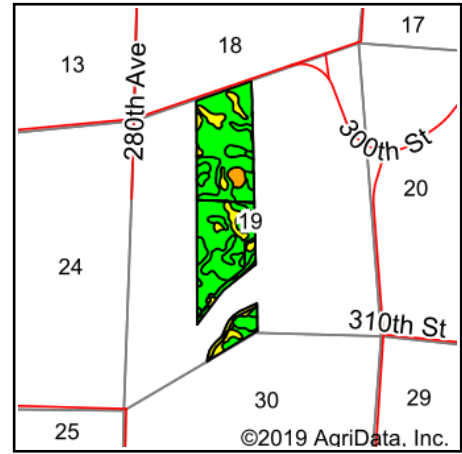


Soils Map



Soils data provided by USDA and NRCS.



State: **Iowa**
 County: **Clay**
 Location: **19-97N-35W**
 Township: **Lake**
 Acres: **96.61**
 Date: **9/6/2019**



Maps Provided By:



© AgriData, Inc. 2019

www.AgriDataInc.com



Area Symbol: IA041, Soil Area Version: 28								
Code	Soil Description	Acres	Percent of field	CSR2 Legend	Non-Irr Class *c	CSR2**	CSR	
507	Canisteo clay loam, 0 to 2 percent slopes	53.95	55.8%		IIw	84	73	
138B	Clarion loam, 2 to 6 percent slopes	18.53	19.2%		Ile	89	74	
6	Okoboji silty clay loam, 0 to 1 percent slopes	12.08	12.5%		IIIw	59	55	
55	Nicollet clay loam, 1 to 3 percent slopes	7.84	8.1%		Iw	89	82	
41C	Sparta loamy sand, 5 to 9 percent slopes	2.11	2.2%		VI s	35	5	
90	Okoboji mucky silty clay loam, 0 to 1 percent slopes	1.08	1.1%		IIIw	56	57	
835D2	Omsrud-Storden complex, 10 to 16 percent slopes, moderately eroded	1.02	1.1%		IVe	53	46	
Weighted Average						80.5	69.7	

**IA has updated the CSR values for each county to CSR2.

*c: Using Capabilities Class Dominant Condition Aggregation Method
 Soils data provided by USDA and NRCS.