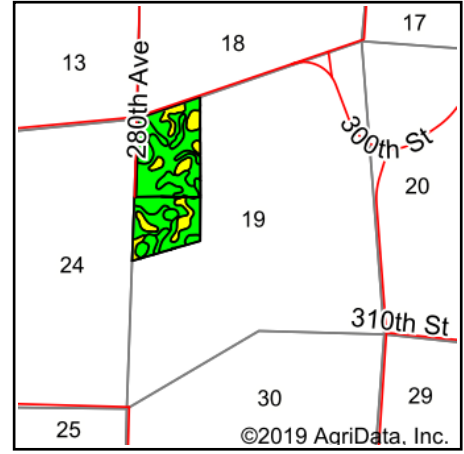


Soils Map



Soils data provided by USDA and NRCS.



State: **Iowa**
 County: **Clay**
 Location: **19-97N-35W**
 Township: **Lake**
 Acres: **70.5**
 Date: **9/3/2019**



Maps Provided By:



© AgriData, Inc. 2019

www.AgriDataInc.com



Area Symbol: IA041, Soil Area Version: 28							
Code	Soil Description	Acres	Percent of field	CSR2 Legend	Non-Irr Class *c	CSR2**	CSR
507	Canisteo clay loam, 0 to 2 percent slopes	33.98	48.2%		IIw	84	73
138B	Clarion loam, 2 to 6 percent slopes	15.77	22.4%		IIe	89	74
6	Okoboji silty clay loam, 0 to 1 percent slopes	11.71	16.6%		IIIw	59	55
55	Nicollet clay loam, 1 to 3 percent slopes	6.55	9.3%		Iw	89	82
138C2	Clarion loam, 6 to 10 percent slopes, moderately eroded	1.48	2.1%		IIIe	83	59
835D2	Omsrud-Storden complex, 10 to 16 percent slopes, moderately eroded	1.01	1.4%		IVe	53	46
Weighted Average						81	70.4

**IA has updated the CSR values for each county to CSR2.

*c: Using Capabilities Class Dominant Condition Aggregation Method
 Soils data provided by USDA and NRCS.