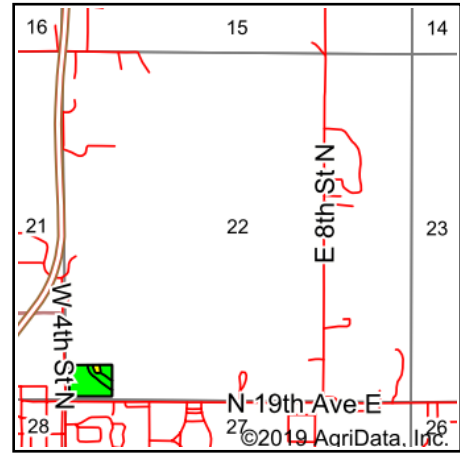
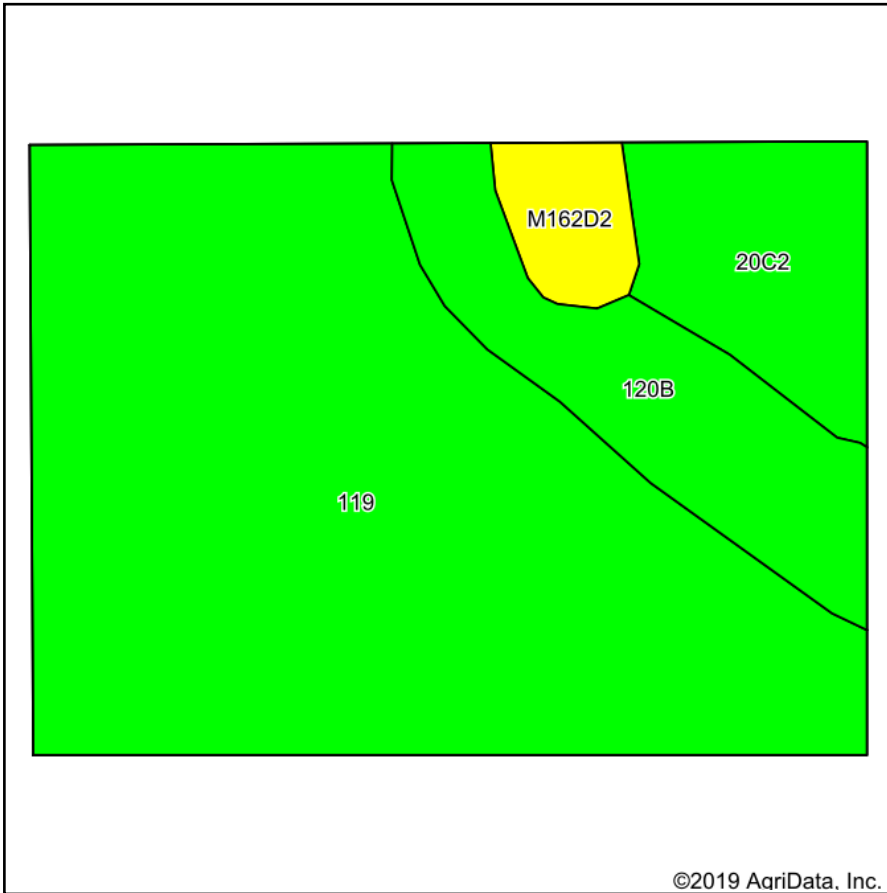


# Tillable Soils Map



State: **Iowa**  
 County: **Jasper**  
 Location: **22-80N-19W**  
 Township: **Newton**  
 Acres: **7.02**  
 Date: **5/3/2019**



Maps Provided By:



© AgriData, Inc. 2019

www.AgriDataInc.com



Area Symbol: IA099, Soil Area Version: 23

Code	Soil Description	Acres	Percent of field	CSR2 Legend	Non-Irr Class *c	CSR2**	CSR	*n NCCPI Overall
119	Muscatine silty clay loam, 0 to 2 percent slopes	4.98	70.9%		lw	100	98	91
120B	Tama silty clay loam, 2 to 5 percent slopes	1.02	14.5%		lle	95	93	96
20C2	Killduff silty clay loam, 5 to 9 percent slopes, eroded	0.75	10.7%		llle	81	73	81
M162D2	Downs silt loam, till plain, 9 to 14 percent slopes, eroded	0.27	3.8%		lVe	57		70
<b>Weighted Average</b>						<b>95.6</b>	<b>*-</b>	<b>*n 89.9</b>

\*\*IA has updated the CSR values for each county to CSR2.

\*- CSR weighted average cannot be calculated on the current soils data, use prior data version for csr values.

\*n: The aggregation method is "Weighted Average using major components"

\*c: Using Capabilities Class Dominant Condition Aggregation Method

Soils data provided by USDA and NRCS.