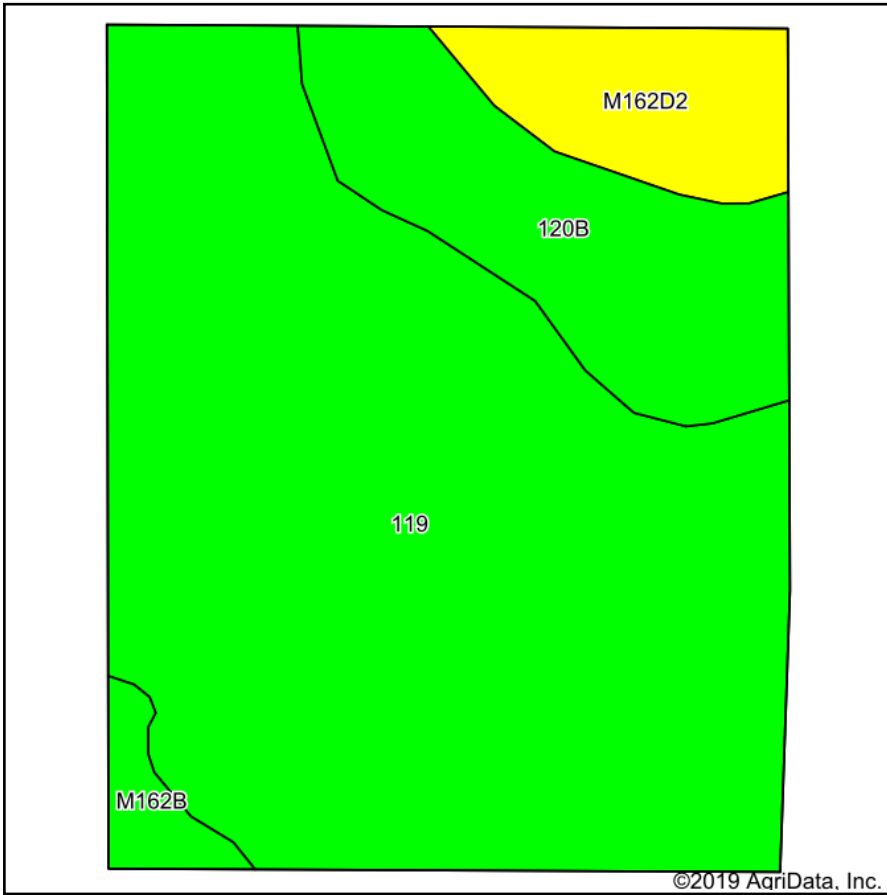
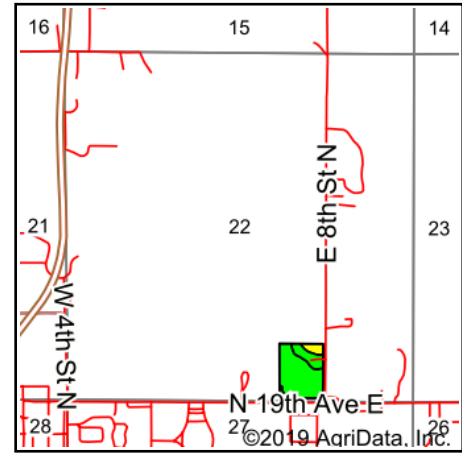


# Tillable Soils Map



Soils data provided by USDA and NRCS.



State: **Iowa**  
 County: **Jasper**  
 Location: **22-80N-19W**  
 Township: **Newton**  
 Acres: **12.3**  
 Date: **5/3/2019**



Maps Provided By:



© AgriData, Inc. 2019

www.AgriDataInc.com



## Area Symbol: IA099, Soil Area Version: 23

| Code                    | Soil Description  | Acres | Percent of field | CSR2 Legend | Non-Irr Class *c | CSR2**      | CSR       | *n NCCPI Overall |
|-------------------------|---|-------|------------------|-------------|------------------|-------------|-----------|------------------|
| 119                     | Muscatine silty clay loam, 0 to 2 percent slopes            | 9.03  | 73.4%            |             | lw               | 100         | 98        | 91               |
| 120B                    | Tama silty clay loam, 2 to 5 percent slopes                 | 2.01  | 16.3%            |             | Ile              | 95          | 93        | 96               |
| M162D2                  | Downs silt loam, till plain, 9 to 14 percent slopes, eroded | 0.98  | 8.0%             |             | IVe              | 57          |           | 70               |
| M162B                   | Downs silt loam, till plain, 2 to 5 percent slopes          | 0.28  | 2.3%             |             | Ile              | 90          |           | 90               |
| <b>Weighted Average</b> |   |       |                  |             |                  | <b>95.5</b> | <b>*-</b> | <b>*n 90.1</b>   |

\*\*IA has updated the CSR values for each county to CSR2.

\*- CSR weighted average cannot be calculated on the current soils data, use prior data version for csr values.

\*n: The aggregation method is "Weighted Average using major components"

\*c: Using Capabilities Class Dominant Condition Aggregation Method

Soils data provided by USDA and NRCS.