



Abbreviated 156 Farm Record

Operator Name : PRODUCERS LIVESTOCK CREDIT CORPORATION
 Farms Associated with Operator : 27-035-4285, 27-021-4397
 CRP Contract Number(s) : None
 Recon ID : 27-035-2018-40

Farm Land Data

Farmland	Cropland	DCP Cropland	WBP	WRP	CRP	GRP	Sugarcane	Farm Status	Number Of Tracts
432.14	173.99	173.99	0.00	0.00	0.00	0.00	0.00	Active	3
State Conservation	Other Conservation	Effective DCP Cropland	Double Cropped		MPL	Acre Election	EWP	DCP Ag.Rel. Activity	Broken From Native Sod
0.00	0.00	173.99	0.00		0.00		0.00	0.00	0.00

Crop Election Choice

ARC Individual	ARC County	Price Loss Coverage
None	WHEAT, OATS, CORN	None

DCP Crop Data

Crop Name	Base Acres	CCC-505 CRP Reduction Acres	CTAP Yield	PLC Yield	HIP
Wheat	4.80	0.00	0	25	
Oats	24.50	0.00	0	40	
Corn	34.30	0.00	0	153	
TOTAL	63.60	0.00			

NOTES

--

Tract Number : 208

Description : T43R30/S6&7 Daggett Brook
 FSA Physical Location : MINNESOTA/CROW WING
 ANSI Physical Location : MINNESOTA/CROW WING
 BIA Unit Range Number :
 HEL Status : NHEL: No agricultural commodity planted on undetermined fields
 Wetland Status : Tract contains a wetland or farmed wetland
 WL Violations : None
 Owners : PRODUCERS LIVESTOCK CREDIT CORPORATION
 Other Producers : None
 Recon ID : None

Tract Land Data

Farm Land	Cropland	DCP Cropland	WBP	WRP	CRP	GRP	Sugarcane
140.11	71.74	71.74	0.00	0.00	0.00	0.00	0.00
State Conservation	Other Conservation	Effective DCP Cropland	Double Cropped	MPL	EWP	DCP Ag. Rel. Activity	Broken From Native Sod
0.00	0.00	71.74	0.00	0.00	0.00	0.00	0.00

DCP Crop Data

Crop Name	Base Acres	CCC-505 CRP Reduction Acres	CTAP Yield	PLC Yield
Wheat	2.70	0.00	0	25

Abbreviated 156 Farm Record

Tract 208 Continued ...

Oats	7.30	0.00	0	42
Corn	16.00	0.00	0	153
TOTAL	26.00	0.00		

NOTES

Tract Number : 51798

Description : T43R30/S7&8 Daggett Brook
 FSA Physical Location : MINNESOTA/CROW WING
 ANSI Physical Location : MINNESOTA/CROW WING
 BIA Unit Range Number :
 HEL Status : NHEL: No agricultural commodity planted on undetermined fields
 Wetland Status : Tract contains a wetland or farmed wetland
 WL Violations : None
 Owners : PRODUCERS LIVESTOCK CREDIT CORPORATION
 Other Producers : None
 Recon ID : None

Tract Land Data

Farm Land	Cropland	DCP Cropland	WBP	WRP	CRP	GRP	Sugarcane
271.46	102.25	102.25	0.00	0.00	0.00	0.00	0.00
State Conservation	Other Conservation	Effective DCP Cropland	Double Cropped	MPL	EWP	DCP Ag. Rel Activity	Broken From Native Sod
0.00	0.00	102.25	0.00	0.00	0.00	0.00	0.00

DCP Crop Data

Crop Name	Base Acres	CCC-505 CRP Reduction Acres	CTAP Yield	PLC Yield
Wheat	2.10	0.00	0	25
Oats	17.20	0.00	0	39
Corn	18.30	0.00	0	153
TOTAL	37.60	0.00		

NOTES

Tract Number : 52401

Description : T43R30/S7 Daggett Brook
 FSA Physical Location : MINNESOTA/CROW WING
 ANSI Physical Location : MINNESOTA/CROW WING
 BIA Unit Range Number :
 HEL Status : HEL determinations not completed for all fields on the tract
 Wetland Status : Wetland determinations not complete
 WL Violations : None
 Owners : PRODUCERS LIVESTOCK CREDIT CORPORATION
 Other Producers : None
 Recon ID : None

Abbreviated 156 Farm Record

Tract 52401 Continued ...

Tract Land Data

Farm Land	Cropland	DCP Cropland	WBP	WRP	CRP	GRP	Sugarcane
20.57	0.00	0.00	0.00	0.00	0.00	0.00	0.00
State Conservation	Other Conservation	Effective DCP Cropland	Double Cropped	MPL	EWP	DCP Ag. Rel Activity	Broken From Native Sod
0.00	0.00	0.00	0.00	0.00	0.00	0.00	0.00

DCP Crop Data

Crop Name	Base Acres	CCC-505 CRP Reduction Acres	CTAP Yield	PLC Yield

NOTES

--

The U.S. Department of Agriculture (USDA) prohibits discrimination against its customers, employees, and applicants for employment on the basis of race, color, national origin, age, disability, sex, gender identity, religion, reprisal, and where applicable, political beliefs, marital status, familial or parental status, sexual orientation, or all or part of an individual's income is derived from any public assistance program, or protected genetic information in employment or in any program or activity conducted or funded by the Department. (Not all prohibited bases will apply to all programs and/or employment activities.) Persons with disabilities, who wish to file a program complaint, write to the address below or if you require alternative means of communication for program information (e.g., Braille, large print, audiotape, etc.) please contact USDA's TARGET Center at (202) 720-2600 (voice and TDD). Individuals who are deaf, hard of hearing, or have speech disabilities and wish to file either an EEO or program complaint, please contact USDA through the Federal Relay Service at (800) 877-8339 or (800) 845-6136 (in Spanish).

If you wish to file a Civil Rights program complaint of discrimination, complete the USDA Program Discrimination Complaint Form, found online at http://www.ascr.usda.gov/complaint_filing_cust.html, or at any USDA office, or call (866) 632-9992 to request the form. You may also write a letter containing all of the information requested in the form. Send your completed complaint form or letter by mail to U.S. Department of Agriculture, Director, Office of Adjudication, 1400 Independence Avenue, S.W., Washington, D.C. 20250-9410, by fax (202) 690-7442 or email at program.intake@usda.gov. USDA is an equal opportunity provider and employer.

Map Created May 07, 2018



Unless otherwise noted:
Shares are 100% operator
Crops are non-irrigated
Corn = yellow for grain

Soybeans = common soybeans for grain
Wheat = HRS, HRW = Grain
Sunflower = Oil, Non-Oil = Grain
Oats and Barley = Spring for grain
Rye = for grain
Peas = process

Alfalfa, Mixed Forage AGM, GMA, IGS = for forage
Beans = Dry, Edible
NAG = for GZ
Canola = Spring for seed

Common Land Unit

- Non_Cropland
- Cropland
- Tract Boundary
- PLSS

Wetland Determination Identifiers

- Restricted Use
- Limited Restrictions
- Exempt from Conservation
- Compliance Provisions

Tract Cropland Total: 71.74 acres



United States Department of Agriculture (USDA) Farm Service Agency (FSA) maps are for FSA Program administration only. This map does not represent a legal survey or reflect actual ownership; rather, it depicts the information provided from the producer and/or National Agricultural Imagery Program (NAIP) imagery. The producer accepts the data 'as is' and assumes all risks associated with its use. USDA-FSA assumes no responsibility for actual or consequential damage incurred as a result of any user's reliance on this data outside FSA Programs. Wetland identifiers do not represent the size, shape, or specific determination of the area. Refer to your original determination (CPA-026 and attached maps) for boundaries and determinations or contact USDA Natural Resources Conservation Service (NRCS). This map displays the 2017 NAIP Imagery.

Map Created May 07, 2018



Unless otherwise noted:

- Shares are 100% operator
- Crops are non-irrigated
- Corn = yellow for grain
- Soybeans = common soybeans for grain
- Wheat = HRS, HRW = Grain
- Sunflower = Oil, Non-Oil = Grain
- Oats and Barley = Spring for grain
- Rye = for grain
- Peas = process
- Alfalfa, Mixed Forage AGM, GMA, IGS = for forage
- Beans = Dry Edible
- NAG = for GZ
- Canola = Spring for seed

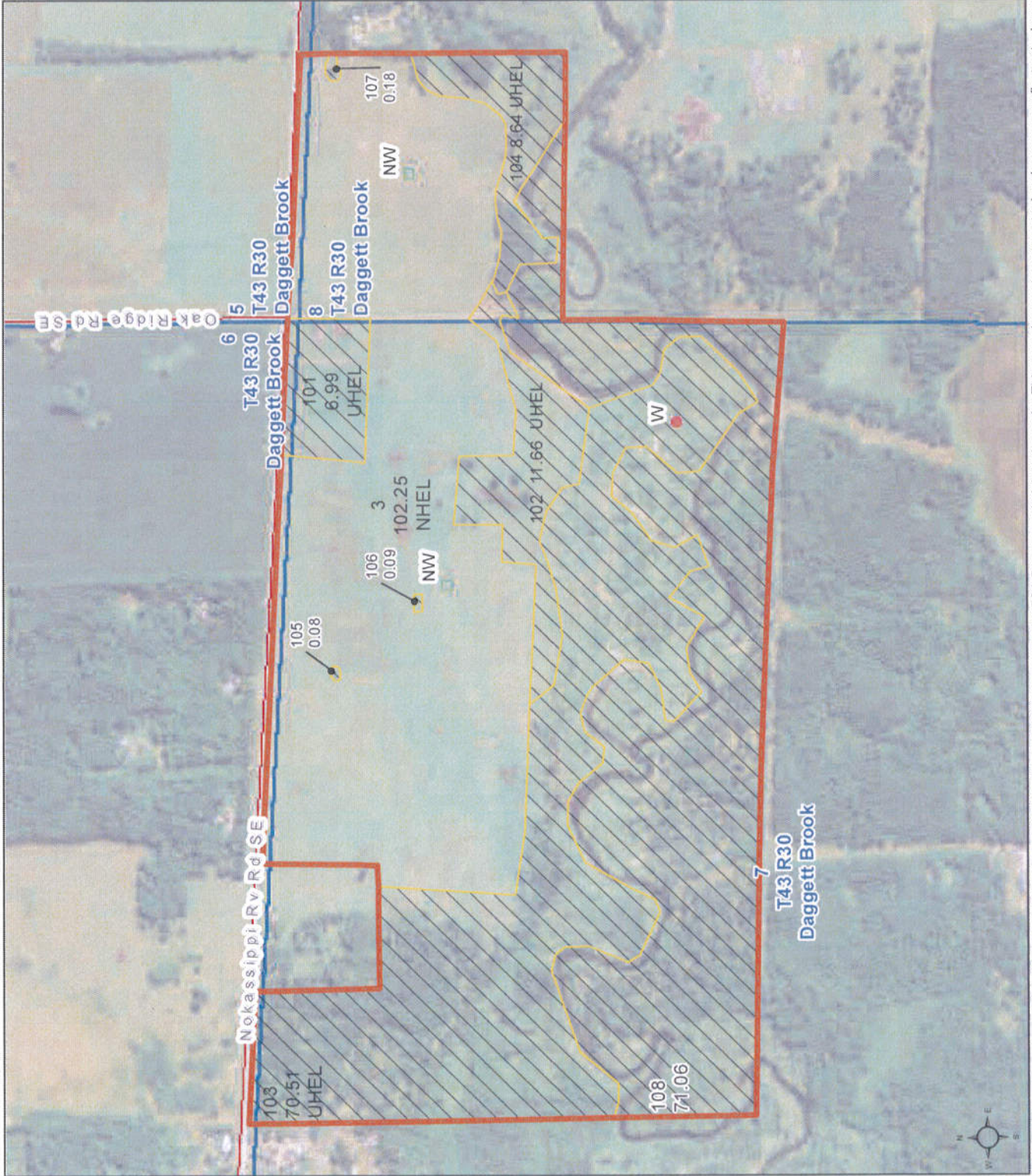
Common Land Unit

- Non_Cropland
- Cropland
- Tract Boundary
- PLSS

Wetland Determination Identifiers

- Restricted Use
- Limited Restrictions
- Exempt from Conservation
- Compliance Provisions

Tract Cropland Total: 102.25 acres



United States Department of Agriculture (USDA) Farm Service Agency (FSA) maps are for FSA Program administration only. This map does not represent a legal survey or reflect actual ownership. The producer accepts the data 'as is' and assumes all risks associated with its use. USDA-FSA assumes no responsibility for actual or consequential damage incurred as a result of any user's reliance on this data outside FSA Programs. Wetland identifiers do not represent the size, shape, or specific determination of the area. Refer to your original determination (CPA-026 and attached maps) for boundaries and determinations or contact USDA Natural Resources Conservation Service (NRCS). This map displays the 2017 NAIP Imagery.

Map Created May 07, 2018



Unless otherwise noted:
Shares are 100% operator
Crops are non-irrigated
Corn = yellow for grain

Soybeans = common soybeans for grain

Wheat = HRS, HRW = Grain

Sunflower = Oil, Non-Oil = Grain

Oats and Barley = Spring for grain

Rye = for grain

Peas = process

Alfalfa, Mixed Forage AGM, GMA, IGS = for forage

Beans = Dry Edible




NAG = for GZ

Canola = Spring for seed

Common Land Unit

-  Non_Cropland
-  Tract Boundary
-  PLSS

Wetland Determination Identifiers

-  Restricted Use
-  Limited Restrictions
-  Exempt from Conservation Compliance Provisions

Tract Cropland Total: 0.00 acres



United States Department of Agriculture (USDA) Farm Service Agency (FSA) maps are for FSA Program administration only. This map does not represent a legal survey or reflect actual ownership; rather it depicts the information provided from the producer and/or National Agricultural Imagery Program (NAIP) imagery. The producer accepts the data 'as is' and assumes all risks associated with its use. USDA-FSA assumes no responsibility for actual or consequential damage incurred as a result of any user's reliance on this data outside FSA Programs. Wetland identifiers do not represent the size, shape, or specific determination of the area. Refer to your original determination (CPA-026 and attached maps) for boundaries and determinations or contact USDA Natural Resources Conservation Service (NRCS). This map displays the 2017 NAIP Imagery.



Abbreviated 156 Farm Record

Operator Name : KEVIN CARLSON
 Farms Associated with Operator : 27-021-1154, 27-035-2664, 27-035-2838, 27-021-2896, 27-035-3055, 27-035-3266, 27-021-3352, 27-021-3353, 27-035-3460, 27-021-3504, 27-035-3712, 27-035-3715, 27-035-3815, 27-021-3858, 27-035-3953, 27-035-4027, 27-035-4284, 27-097-10788
 CRP Contract Number(s) : None
 Recon ID : 27-035-2018-40

Farm Land Data

Farmland	Cropland	DCP Cropland	WBP	WRP	CRP	GRP	Sugarcane	Farm Status	Number Of Tracts
783.88	565.47	565.47	0.00	0.00	0.00	0.00	0.00	Active	2
State Conservation	Other Conservation	Effective DCP Cropland	Double Cropped		MPL	Acre Election	EWP	DCP Ag.Rel. Activity	Broken From Native Sod
0.00	0.00	565.47	0.00		0.00		0.00	0.00	0.00

Crop Election Choice

ARC Individual	ARC County	Price Loss Coverage
None	WHEAT, OATS, CORN	None

DCP Crop Data

Crop Name	Base Acres	CCC-505 CRP Reduction Acres	CTAP Yield	PLC Yield	HIP
Wheat	30.00	0.00	0	25	
Oats	82.00	0.00	0	42	
Corn	179.20	0.00	0	153	
TOTAL	291.20	0.00			

NOTES

--

Tract Number : 409

Description : T44R30/S31,32 T43R30/S5
 FSA Physical Location : MINNESOTA/CROW WING
 ANSI Physical Location : MINNESOTA/CROW WING
 BIA Unit Range Number :
 HEL Status : NHEL: No agricultural commodity planted on undetermined fields
 Wetland Status : Tract contains a wetland or farmed wetland
 WL Violations : None
 Owners : PRODUCERS LIVESTOCK CREDIT CORPORATION
 Other Producers : None
 Recon ID : None

Tract Land Data

Farm Land	Cropland	DCP Cropland	WBP	WRP	CRP	GRP	Sugarcane
435.58	262.93	262.93	0.00	0.00	0.00	0.00	0.00
State Conservation	Other Conservation	Effective DCP Cropland	Double Cropped	MPL	EWP	DCP Ag. Rel Activity	Broken From Native Sod
0.00	0.00	262.93	0.00	0.00	0.00	0.00	0.00

DCP Crop Data

Crop Name	Base Acres	CCC-505 CRP Reduction Acres	CTAP Yield	PLC Yield



Abbreviated 156 Farm Record

Tract 409 Continued ...

Wheat	10.10	0.00	0	25
Oats	27.80	0.00	0	42
Corn	60.90	0.00	0	153
TOTAL	98.80	0.00		

NOTES

Tract Number : 51797
Description : T43R30/S5,6 Daggett Brook
FSA Physical Location : MINNESOTA/CROW WING
ANSI Physical Location : MINNESOTA/CROW WING
BIA Unit Range Number :
HEL Status : NHEL: No agricultural commodity planted on undetermined fields
Wetland Status : Tract contains a wetland or farmed wetland
WL Violations : None
Owners : PRODUCERS LIVESTOCK CREDIT CORPORATION
Other Producers : None
Recon ID : None

Tract Land Data

Farm Land	Cropland	DCP Cropland	WBP	WRP	CRP	GRP	Sugarcane
348.30	302.54	302.54	0.00	0.00	0.00	0.00	0.00
State Conservation	Other Conservation	Effective DCP Cropland	Double Cropped	MPL	EWP	DCP Ag. Rel Activity	Broken From Native Sod
0.00	0.00	302.54	0.00	0.00	0.00	0.00	0.00

DCP Crop Data

Crop Name	Base Acres	CCC-505 CRP Reduction Acres	CTAP Yield	PLC Yield
Wheat	19.90	0.00	0	25
Oats	54.20	0.00	0	42
Corn	118.30	0.00	0	153
TOTAL	192.40	0.00		

NOTES

The U.S. Department of Agriculture (USDA) prohibits discrimination against its customers, employees, and applicants for employment on the basis of race, color, national origin, age, disability, sex, gender identity, religion, reprisal, and where applicable, political beliefs, marital status, familial or parental status, sexual orientation, or all or part of an individual's income is derived from any public assistance program, or protected genetic information in employment or in any program or activity conducted or funded by the Department. (Not all prohibited bases will apply to all programs and/or employment activities.) Persons with disabilities who wish to file a program complaint, write to the address below or if you require alternative means of communication for program information (e.g., Braille, large print, audiotape, etc.) please contact USDA's TARGET Center at (202) 720-2600 (voice and TDD). Individuals who are deaf, hard of hearing, or have speech disabilities and wish to file either an EEO or program complaint, please contact USDA through the Federal Relay Service at (800) 877-8339 or (800) 845-6136 (in Spanish).

If you wish to file a Civil Rights program complaint of discrimination, complete the USDA Program Discrimination Complaint Form, found online at http://www.ascr.usda.gov/complaint_filing_cust.html, or at any USDA office, or call (866) 632-9992 to request the form. You may also write a letter containing all of the information requested in the form. Send your completed complaint form or letter by mail to U.S. Department of Agriculture, Director, Office of Adjudication, 1400 Independence Avenue, S.W., Washington, D.C. 20250-9410, by fax (202) 690-7442 or email at program.intake@usda.gov. USDA is an equal opportunity provider and employer.

Map Created May 07, 2018



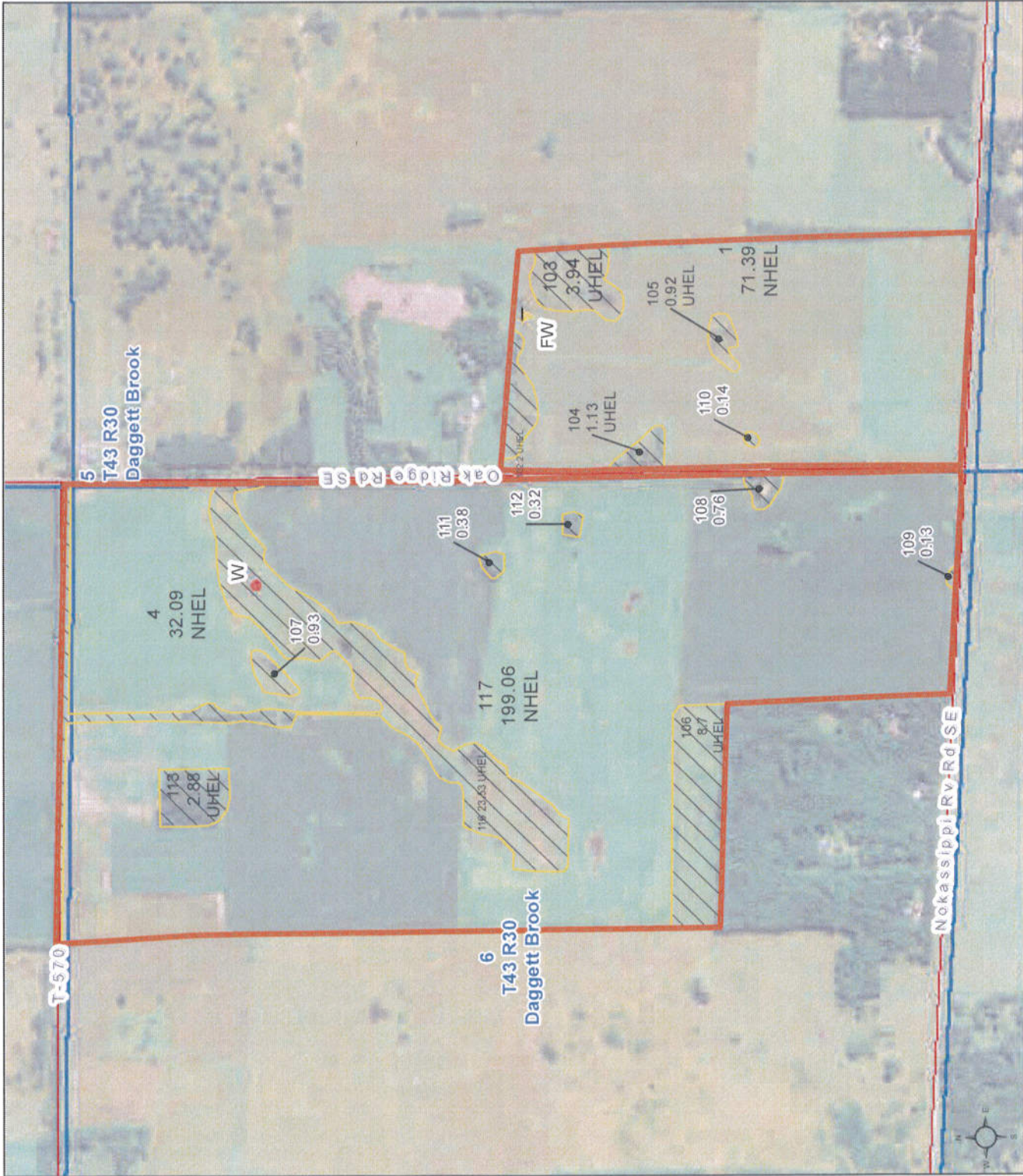
Unless otherwise noted:
 Shares are 100% operator
 Crops are non-irrigated
 Corn = yellow for grain
 Soybeans = common soybeans for grain
 Wheat = HRS, HRW = Grain
 Sunflower = Oil, Non-Oil = Grain
 Oats and Barley = Spring for grain
 Rye = for grain
 Peas = process
 Alfalfa, Mixed Forage AGM, GMA, IGS = for forage
 Beans = Dry Edible
 NAG = for GZ
 Canola = Spring for seed

Common Land Unit

- Non_Cropland
- Cropland
- Tract Boundary
- PLSS

Wetland Determination Identifiers

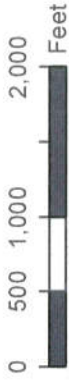
- Restricted Use
- Limited Restrictions
- Exempt from Conservation
- Compliance Provisions



Tract Cropland Total: 302.54 acres

United States Department of Agriculture (USDA) Farm Service Agency (FSA) maps are for FSA Program administration only. This map does not represent a legal survey or reflect actual ownership; rather it depicts the information provided from the producer and/or National Agricultural Imagery Program (NAIP) imagery. The producer accepts the data 'as is' and assumes all risks associated with its use. USDA-FSA assumes no responsibility for actual or consequential damage incurred as a result of any user's reliance on this data outside FSA Programs. Wetland identifiers do not represent the size, shape, or specific determination of the area. Refer to your original determination (CPA-026 and attached maps) for boundaries and determinations or contact USDA Natural Resources Conservation Service (NRCS). This map displays the 2017 NAIP Imagery.

Map Created May 07, 2018



Unless otherwise noted:
 Shares are 100% operator
 Crops are non-irrigated
 Corn = yellow for grain
 Soybeans = common soybeans for grain
 Wheat = HRS, HRW = Grain
 Sunflower = Oil, Non-Oil = Grain
 Oats and Barley = Spring for grain
 Rye = for grain
 Peas = process
 Alfalfa, Mixed Forage AGM, GMA, IGS = for forage
 Beans = Dry Edible
 NAG = for GZ
 Canola = Spring for seed

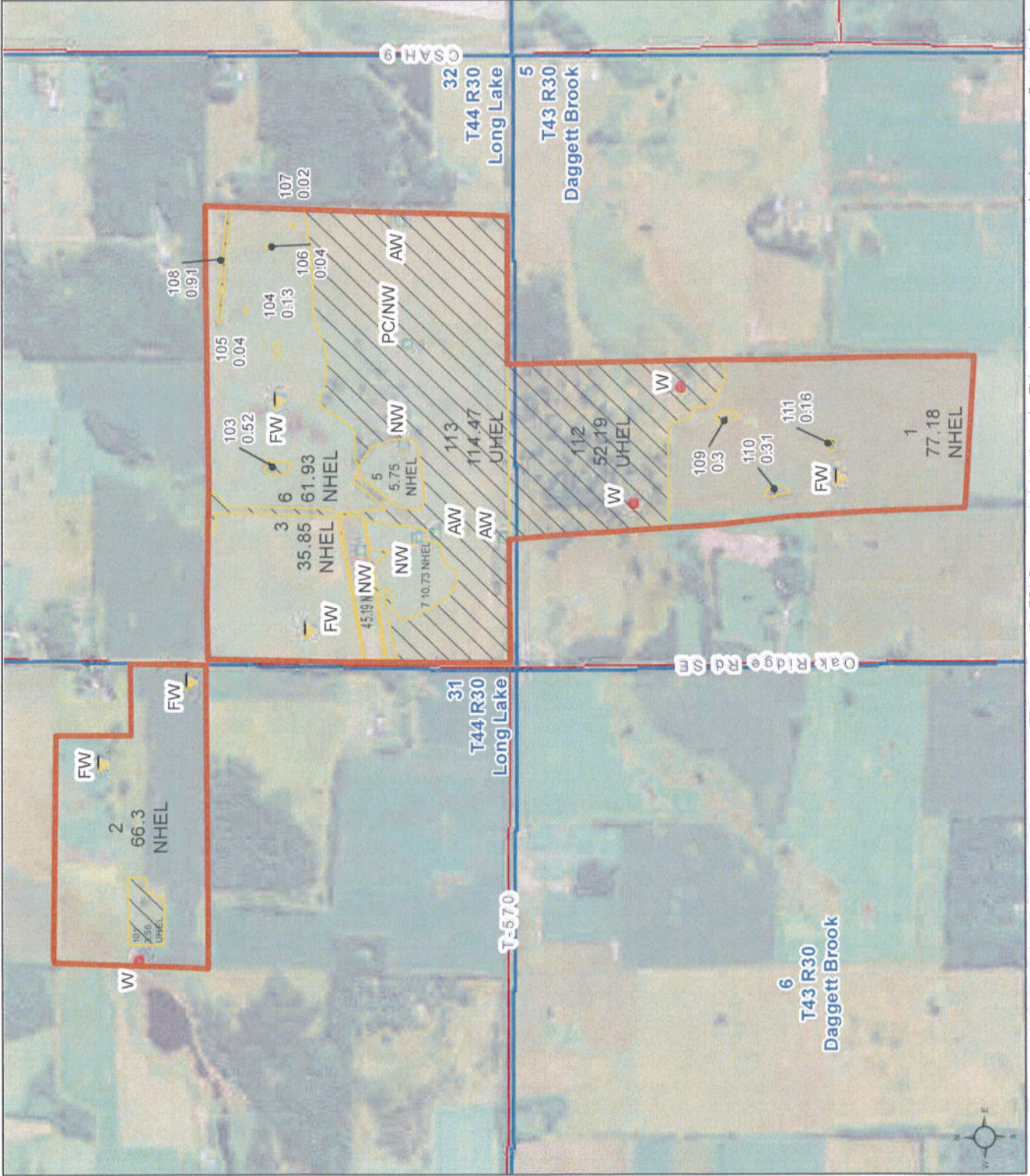
Common Land Unit

- Non_Cropland
- Cropland
- Tract Boundary
- PLSS

Wetland Determination Identifiers

- Restricted Use
- Limited Restrictions
- Exempt from Conservation
- Compliance Provisions

Tract Cropland Total: 262.93 acres



United States Department of Agriculture (USDA) Farm Service Agency (FSA) maps are for FSA Program administration only. This map does not represent a legal survey or reflect actual ownership; rather, it depicts the information provided from the producer and/or National Agricultural Imagery Program (NAIP) imagery. The producer accepts the data 'as is' and assumes all risks associated with its use. USDA-FSA assumes no responsibility for actual or consequential damage incurred as a result of any user's reliance on this data outside FSA Programs. Wetland identifiers do not represent the size, shape, or specific determination of the area. Refer to your original determination (CPA-026 and attached maps) for boundaries and determinations or contact USDA Natural Resources Conservation Service (NRCS). This map displays the 2017 NAIP Imagery.