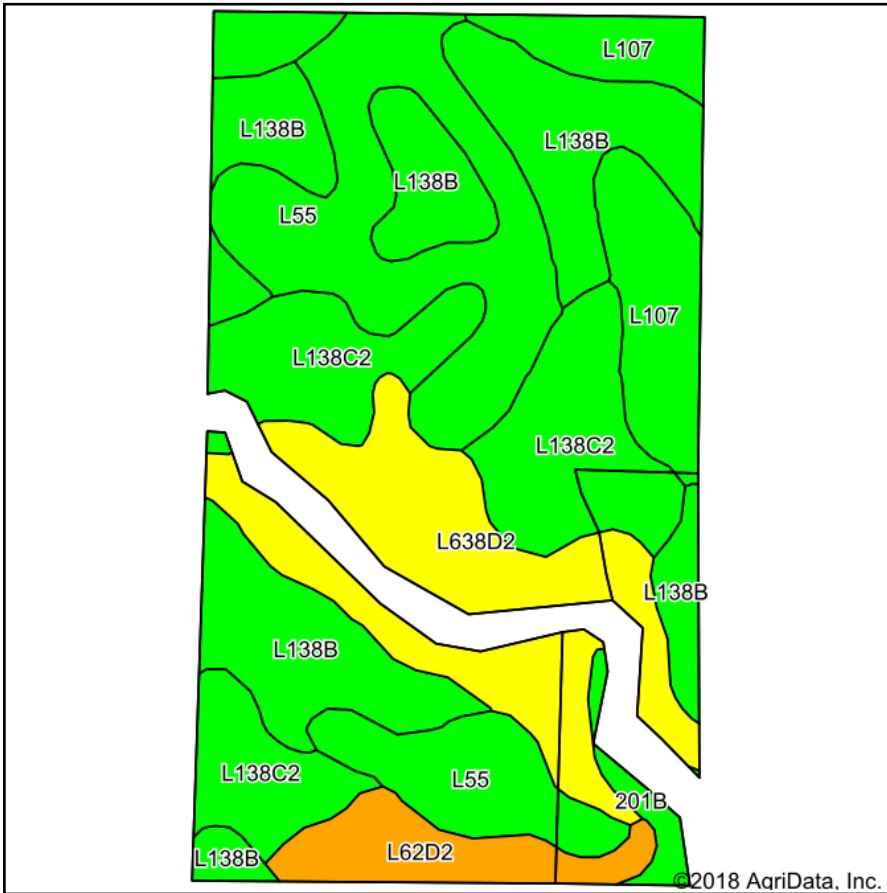
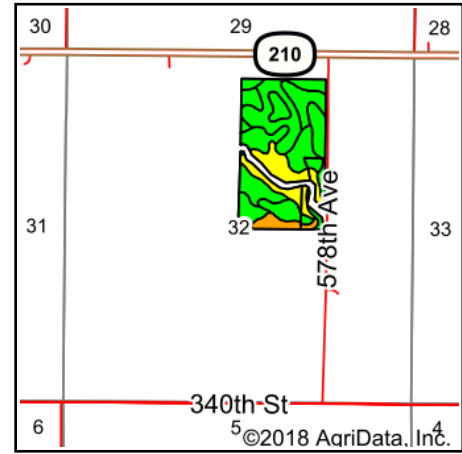


Tillable Soils Map



Soils data provided by USDA and NRCS.



State: **Iowa**
 County: **Story**
 Location: **32-82N-23W**
 Township: **Union**
 Acres: **63.6**
 Date: **3/22/2018**



Maps Provided By:



Area Symbol: IA169, Soil Area Version: 28

Code	Soil Description	Acres	Percent of field	CSR2 Legend	Non-Irr Class *c	CSR2**	CSR	NCCPI Overall
L138B	Clarion loam, Bemis moraine, 2 to 6 percent slopes	15.84	24.9%		Ile	88		77
L55	Nicollet loam, 1 to 3 percent slopes	13.85	21.8%		Ie	91		82
L138C2	Clarion loam, Bemis moraine, 6 to 10 percent slopes, moderately eroded	12.07	19.0%		IIIe	83		61
L638D2	Omsrud-Storden complex, Bemis moraine, 10 to 16 percent slopes, moderately eroded	10.81	17.0%		IVe	53		62
L107	Webster clay loam, Bemis moraine, 0 to 2 percent slopes	6.95	10.9%		IIw	88		80
L62D2	Storden loam, Bemis moraine, 10 to 16 percent slopes, moderately eroded	3.20	5.0%		IVe	41		60
201B	Coland-Terril complex, 1 to 5 percent slopes	0.88	1.4%		IIw	76	40	91
Weighted Average						79.2	*-	72.2

**IA has updated the CSR values for each county to CSR2.

*- CSR weighted average cannot be calculated on the current soils data, use prior data version for csr values.

*c: Using Capabilities Class Dominant Condition Aggregation Method

Soils data provided by USDA and NRCS.