



IOWA DEPARTMENT OF TRANSPORTATION
PLAT OF SURVEY
EXHIBIT "A"



COUNTY PLYMOUTH STATE CONTROL NO. -
 PROJECT NO. BG9A20(000)--80-75 PARCEL NO. _____
 SECTION 31 TOWNSHIP 93N RANGE 48W
 ACQUIRED FROM _____
 EXCESS PARCEL 64,858 SQ. FT. ACCESS POINTS _____
 RETAINED ACCESS RIGHTS FROM STA. 2+27.06 IA12 TO STA. 4+38.86 IA12 MAIN LINE LT SIDE.
 RETAINED ACCESS RIGHTS FROM STA. 200+95.86 IA3 TO STA. 200+97.00 IA3 MAIN LINE RT SIDE.
 COUNTY AUDITOR PARCEL DESIGNATION " "

IOWA DEPARTMENT OF TRANSPORTATION LEGAL DESCRIPTION

A parcel of land located in Lots 4, 5 and 6 in Block 49 and Lot 1 and part of Lots 2, 3 and 4 in Block 50 and the vacated Sioux Street lying between Blocks 49 and 50 of the Sargent's Addition to the City of Akron, in Section 31, Township 93 North, Range 48 West of the Fifth Principal Meridian, Plymouth County, Iowa, as shown on the Plat of Survey, Page 2 of 2 attached hereto and by reference made a part hereof and more particularly described as follows:

Beginning at the Northeast Corner of Lot 4 of said Block 49; thence South 01°18'12" West, 185.97 feet along the East line of said Lot 4 to the Southeast Corner of said Lot 4, said Southeast Corner being on the South line of said Sargent's Addition and also being on the South line of the Southwest ¼ of said Section 31; thence North 89°46'16" West, 387.83 feet along said South line to a point on a line being 132.00 feet distant from and parallel with the existing common right of way line between Primary Road Ia12/Ia3 and the Chicago, Milwaukee, St. Paul and Pacific Railroad; thence North 26°18'59" East, 213.60 feet along said line to a point on the existing South right of way line of Primary Road Ia3, also known as local road South Street; thence South 88°38'03" East, 297.44 feet along said existing South right of way line to the Point of Beginning, containing 64,858 square feet.



IOWA DEPARTMENT OF TRANSPORTATION
PLAT OF SURVEY
EXHIBIT "A"



COUNTY PLYMOUTH STATE CONTROL NO. -

PROJECT NO. BG9A20(000)--80-75 PARCEL NO.

SECTION 31 TOWNSHIP 93N RANGE 48W

ACQUIRED FROM

EXCESS PARCEL 64,858 SQ. FT. ACCESS POINTS

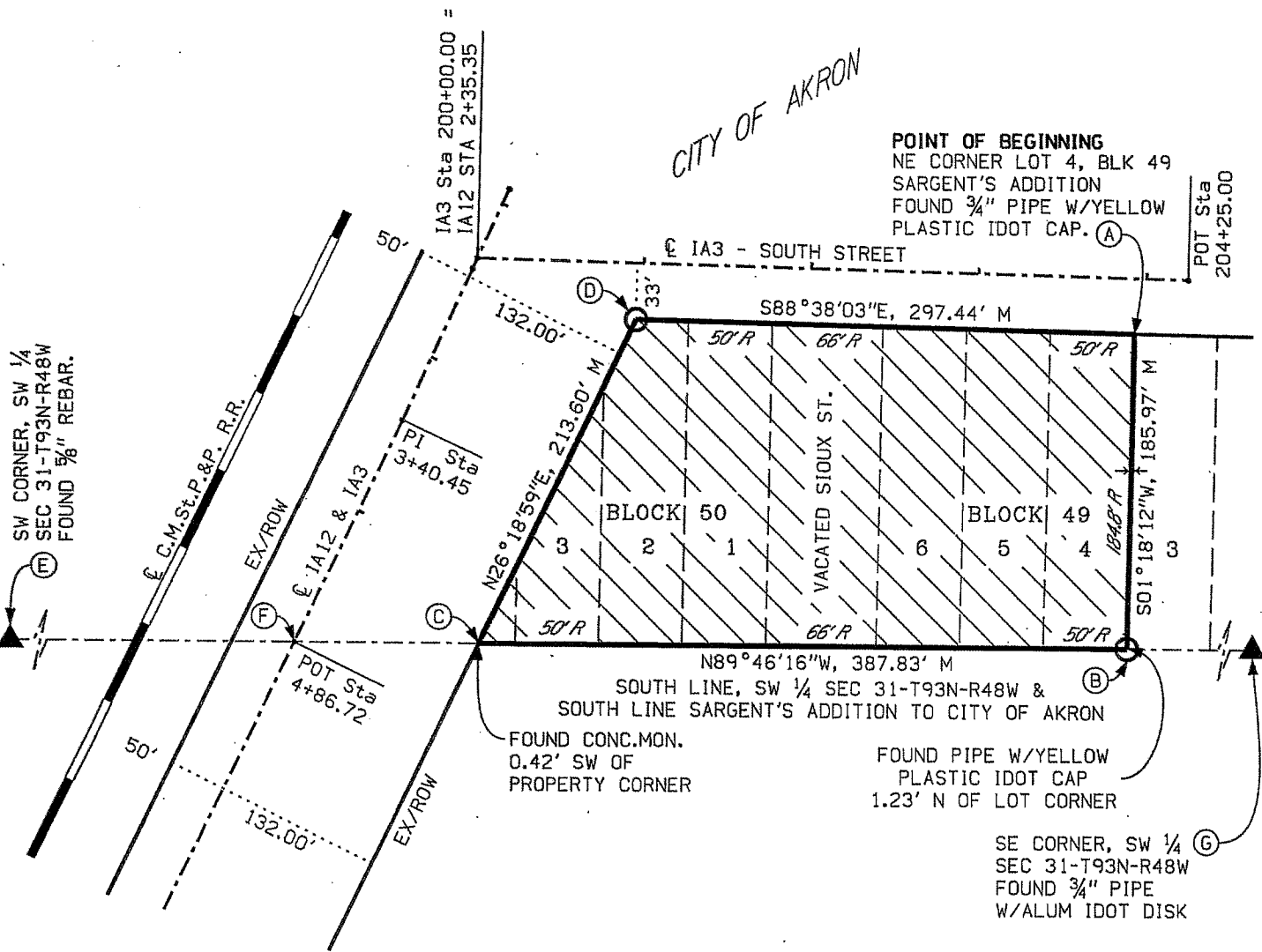
RETAINED ACCESS RIGHTS FROM STA. 2+27.06 IA12 TO STA. 4+38.86 IA12 MAIN LINE LT SIDE.

RETAINED ACCESS RIGHTS FROM STA. 200+95.86 IA3 TO STA. 200+97.00 IA3 MAIN LINE RT SIDE.

COUNTY AUDITOR PARCEL DESIGNATION " "

HORIZONTAL DATUM:

THE HORIZONTAL ALIGNMENT FOR THIS SURVEY IS A RETRACE OF THE AS-BUILT PLANS FOR PLYMOUTH COUNTY PROJECTS FN-3-1(5)--21-75 AND FA-807-A AS THEY RELATE TO A FIELD SURVEY, CONDUCTED DURING AUGUST, 2016 WITH EQUATIONS AS NEEDED.



Pt#	Station	Offset
C	IA12 STA 4+38.86	☉ 98.41' LT
D	IA12 STA 2+27.06	☉ 101.04' LT
Pt#	Station	Offset
A	IA3 STA 203+93.31	☉ 32.58' RT
D	IA3 STA 200+95.86	☉ 33.00' RT

	Direction	Distance
E-F	S89°46'16"E	601.94'
F-C	S89°46'16"E	109.44'
B-G	S89°46'16"E	1539.77'