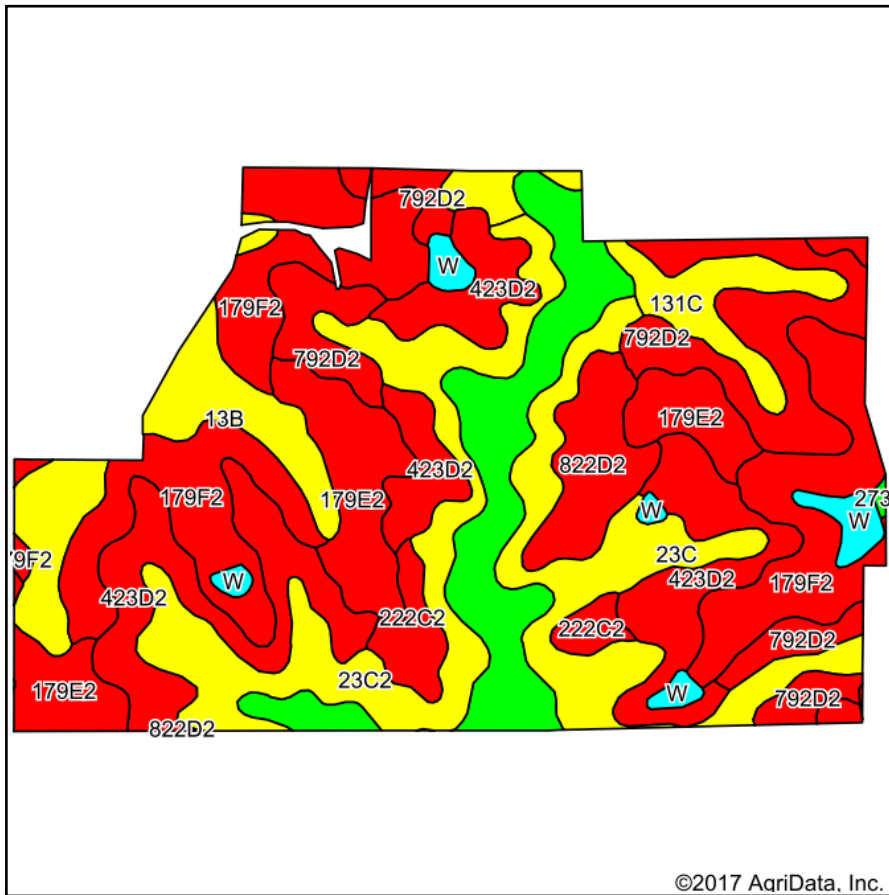
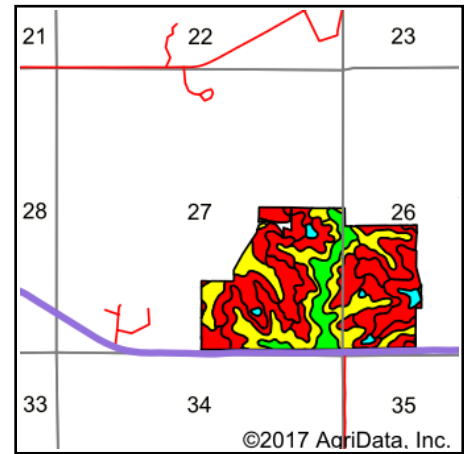


Soils Map



Soils data provided by USDA and NRCS.



State: **Iowa**
 County: **Lucas**
 Location: **27-72N-21W**
 Township: **Lincoln**
 Acres: **200.19**
 Date: **9/14/2017**



Maps Provided By:



© AgriData, Inc. 2017

www.AgriDataInc.com



Area Symbol: IA117, Soil Area Version: 24

Code	Soil Description	Acres	Percent of field	CSR2 Legend	Non-Irr Class *c	CSR2**	CSR	Corn	Soybeans	NCCPI Overall
179F2	Gara clay loam, 18 to 25 percent slopes, moderately eroded	36.77	18.4%		IVe	11	13			46
423D2	Bucknell silty clay loam, 9 to 14 percent slopes, moderately eroded	31.43	15.7%		IVe	7	13			60
792D2	Armstrong clay loam, 9 to 14 percent slopes, moderately eroded	21.50	10.7%		IVe	5	13			50
23C2	Arispe silty clay loam, 5 to 9 percent slopes, moderately eroded	20.69	10.3%		IIIe	62	50			82
364B	Grundy silty clay loam, 2 to 5 percent slopes	18.76	9.4%		Ile	72	75			78
179E2	Gara clay loam, 14 to 18 percent slopes, moderately eroded	17.46	8.7%		VIe	23	33			55
23C	Arispe silty clay loam, 5 to 9 percent slopes	16.38	8.2%		IIIe	66	55			82
13B	Zook-Olmitz-Vesser complex, 0 to 5 percent slopes	12.45	6.2%		IIw	68	53			79
131C	Pershing silt loam, 5 to 9 percent slopes	7.95	4.0%		IIIe	65	49			70
822D2	Lamoni silty clay loam, 9 to 14 percent slopes, moderately eroded	7.45	3.7%		IVe	29	15			69
222C2	Clarinda silty clay loam, 5 to 9 percent slopes, moderately eroded	4.66	2.3%		IVw	34	25			45
W	Water	4.01	2.0%			0	0			0
24F2	Shelby clay loam, 18 to 25 percent slopes, moderately eroded	0.50	0.2%		VIe	22	18			51
273B	Olmitz loam, heavy till, 2 to 5 percent slopes	0.18	0.1%		Ile	81	72	152	41	93
Weighted Average						33	31.9	0.1	*~	62

**IA has updated the CSR values for each county to CSR2.

*c: Using Capabilities Class Dominant Condition Aggregation Method

Soils data provided by USDA and NRCS.