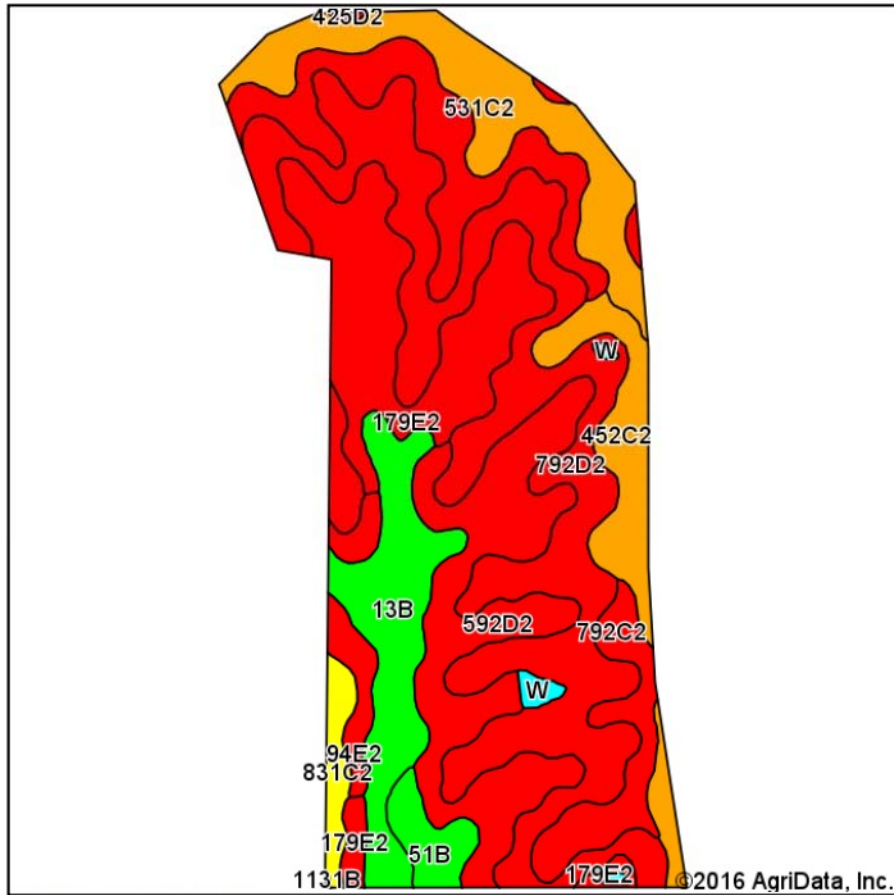
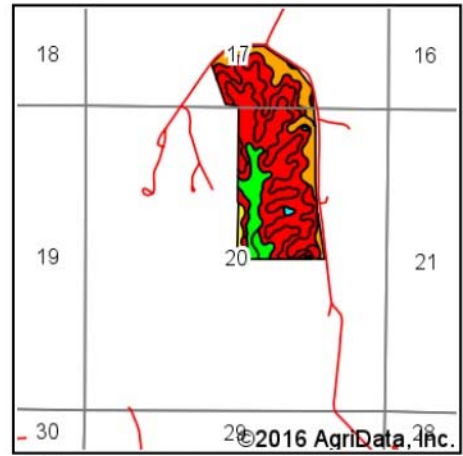


Total Soils Map



Soils data provided by USDA and NRCS.



State: **Iowa**
 County: **Decatur**
 Location: **20-68N-25W**
 Township: **Eden**
 Acres: **11**
 Date: **12/14/2016**

PEOPLES COMPANY
 INNOVATIVE. REAL ESTATE. SOLUTIONS.

Maps Provided By:

surety
 CUSTOMIZED ONLINE MAPPING
 © AgriData, Inc. 2016 www.AgriDataInc.com



Area Symbol: IA053, Soil Area Version: 21

Code	Soil Description	Acres	Percent of field	CSR2 Legend	CSR2**	CSR	*n NCCPI Overall
792D2	Armstrong clay loam, 9 to 14 percent slopes, moderately eroded	34.48	30.0%		5	13	51
592D2	Mystic clay loam, 9 to 14 percent slopes, moderately eroded	15.46	13.4%		24	5	56
179E2	Gara clay loam, 14 to 18 percent slopes, moderately eroded	14.90	13.0%		23	33	55
792C2	Armstrong clay loam, 5 to 9 percent slopes, moderately eroded	14.74	12.8%		24	27	53
531C2	Kniffin silty clay loam, 5 to 9 percent slopes, moderately eroded	10.66	9.3%		48	31	56
13B	Olmitz-Zook-Vesser complex, 0 to 5 percent slopes	10.12	8.8%		76	55	84
452C2	Lineville silt loam, 5 to 9 percent slopes, moderately eroded	6.91	6.0%		46	31	64
94E2	Caleb-Mystic complex, 9 to 18 percent slopes, moderately eroded	2.70	2.3%		30	5	59
51B	Vesser silt loam, 2 to 5 percent slopes	2.35	2.0%		74	65	95
831C2	Pershing silty clay loam, terrace, 5 to 9 percent slopes, moderately eroded	1.91	1.7%		64	40	59
W	Water	0.68	0.6%		0	0	0
425D2	Keswick clay loam, 9 to 14 percent slopes, moderately eroded	0.09	0.1%		8	12	43
Weighted Average					28	24	*n 57.5

Area Symbol: IA053, Soil Area Version: 21

**IA has updated the CSR values for each county to CSR2.

*n: NCCPI updated on 1-25-2016

Soils data provided by USDA and NRCS.