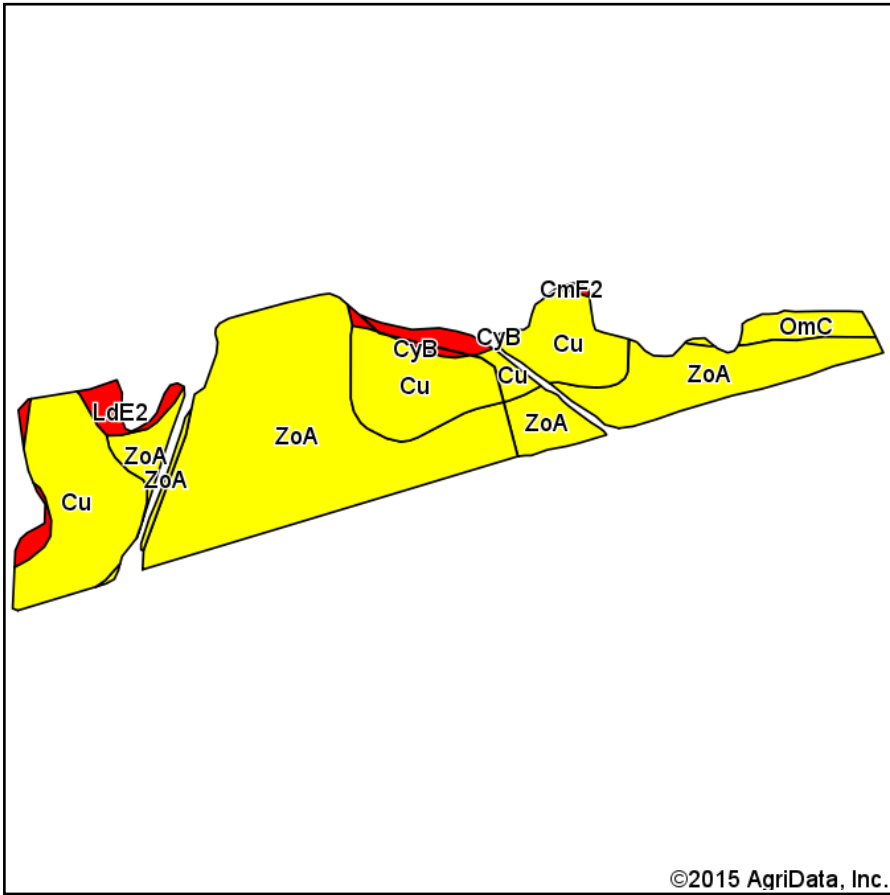
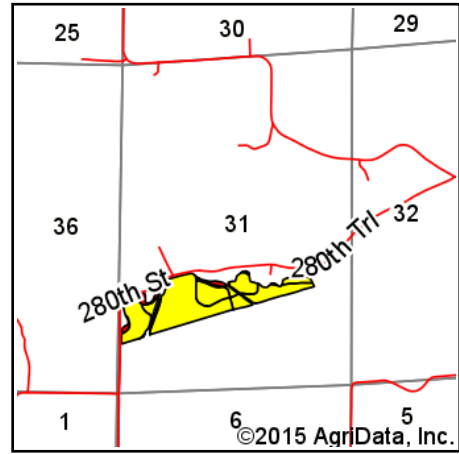


Soils Map-CSR(as of 1/21/12)



Soils data provided by USDA and NRCS.



State: **Iowa**
 County: **Madison**
 Location: **31-75N-26W**
 Township: **South**
 Acres: **33.26**
 Date: **12/28/2015**



Maps Provided By:



Archived Soils Ending 1/21/2012

| Code | Soil Description | Acres | Percent of field | CSR Legend | Non-Irr Class *c | CSR* | Alfalfa hay | Bromegrass alfalfa | Bromegrass alfalfa hay | Corn | Kentucky bluegrass | Oats | Orchardgrass red clover | Orchardgrass red clover hay | Smooth bromegrass |
|-------------------------|--|-------|------------------|------------|------------------|-----------|-------------|--------------------|------------------------|--------------|--------------------|-------------|-------------------------|-----------------------------|-------------------|
| ZoA | Zook silty clay loam, 0 to 2 percent slopes | 19.54 | 58.7% | | Ilw | 70 | 3.8 | | 3.8 | 174 | 3.1 | 70 | | | 5 |
| Cu | Colo silty clay loam | 10.97 | 33.0% | | Ilw | 70 | | 6.8 | 3.6 | 174 | 2.9 | 70 | | | 4 |
| OmC | Olmitz loam, 5 to 9 percent slopes | 1.00 | 3.0% | | Ille | 57 | | 9.3 | 5.5 | 156 | 3.2 | 62 | | | 5 |
| LdE2 | Lindley loam, 14 to 18 percent slopes, moderately eroded | 0.99 | 3.0% | | Vle | 28 | | | | 117 | | 47 | 5.8 | 2.9 | |
| CyB | Colo-Ely silty clay loams, gullied, 2 to 5 percent slopes | 0.69 | 2.1% | | Vw | 10 | | 6.7 | | 93 | 0.5 | 37 | | | 4 |
| CmF2 | Clanton-Gosport silt loams, 18 to 25 percent slopes, moderately eroded | 0.07 | 0.2% | | Vlle | 5 | | | | 86 | 0.3 | 34 | | | |
| Weighted Average | | | | | | 67 | 2.2 | 2.7 | 3.6 | 169.9 | 2.9 | 68.3 | 0.2 | 0.1 | 4 |

*The CSR ratings are dated 1/21/2012 and will be available to aid in the transition to CSR2.

*c: Using Capabilities Class Dominant Condition Aggregation Method

Soils data provided by USDA and NRCS.