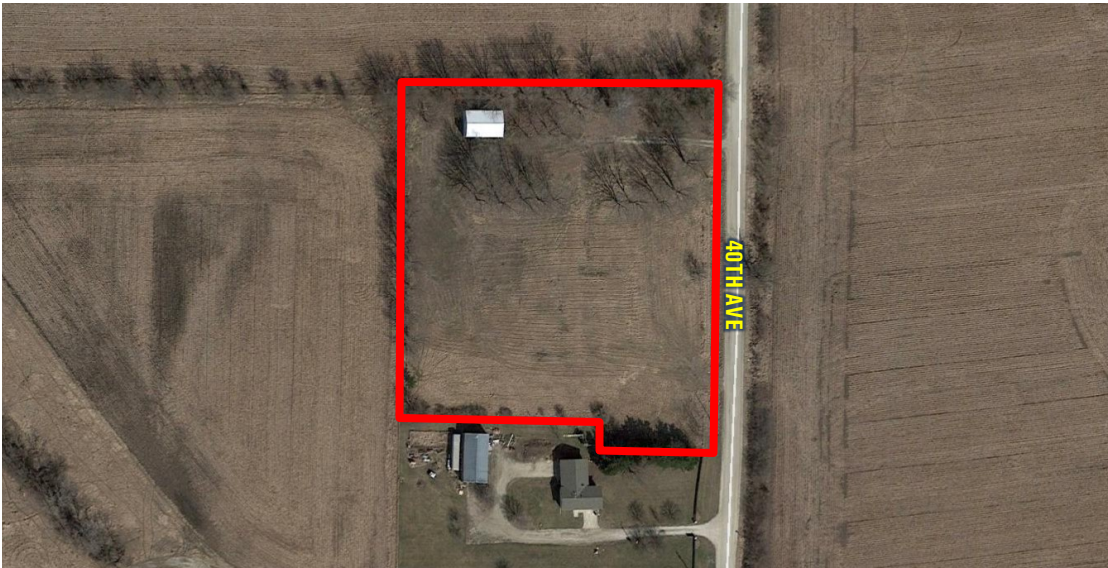


LAND FOR SALE



3.67 ACRES M/L WARREN COUNTY, IOWA



LISTING #13603

PRICE: \$87,500

DESCRIPTION: Large rural building lot within 15 minutes of Des Moines available! This lot offers 3.67 acres or residential zoned land just south of Cumming and Norwalk. Excellent secluded location with amenities such as rural water and electric. A 32 x 45 utility building is located on the northwest corner of the property and water lines from an older well are located along the north property line. Three separate drives and a large open area create many possible building and driveway locations for your dream home. Lot is located in Section 28 of Linn Township, Warren County, Iowa.

DIRECTIONS: From Cumming: Travel east on G14 / Cumming Avenue for 0.5 mile to 30th Avenue. Head south on 30th Avenue for 2 miles around curve. Continue straight onto Dubuque Avenue. Follow road around curves for 1.25 miles to 40th avenue. Property will be on the west side of the road. Look for signs.

ESTIMATED TAXES: \$88 Annually

SCHOOL DISTRICT: Martensdale-Saint Mary's

TRAVIS SMOCK

C: 319.361.8089

Travis@PeoplesCompany.com

© 2016 Peoples Company We obtained this information from sources we believe to be reliable. However, we have not verified its accuracy and make no guarantee, warranty or representation about it. It is submitted subject to the possibility of errors, omissions, change of price, rental or other conditions, prior sale, lease or financing, or withdrawal without notice. We include projections, opinions, assumptions or estimates for example only and they may not represent current or future performance of the property. You and your tax and legal advisors should conduct your own investigation of the property and transaction.