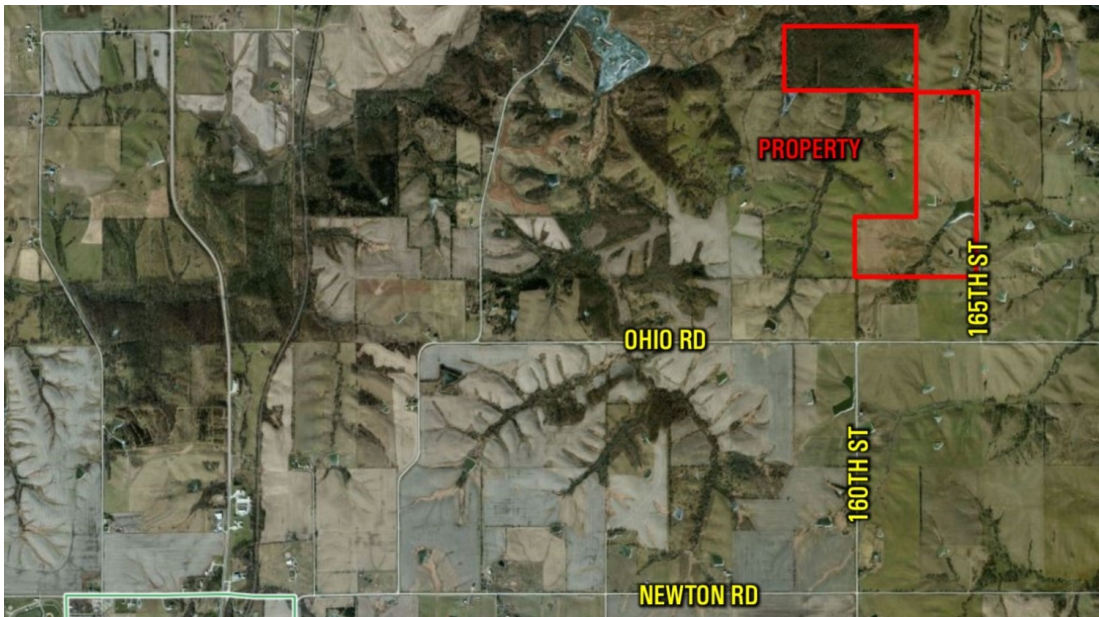
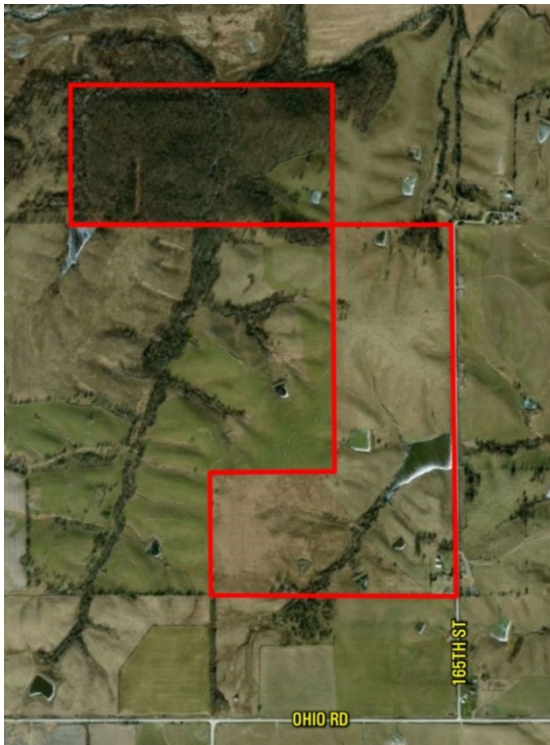


# LAND FOR SALE



## 240 ACRES M/L WAYNE COUNTY, IOWA



### LISTING #13784

PRICE: \$790,000 (\$3,291/Acre)

**DESCRIPTION:** 240 acres m/l of Wayne County land located just a few miles north and east of Corydon, Iowa. This land consists of approximately 155 acres m/l of good pasture land with multiple ponds located throughout the property. With an additional 80 acres m/l of good heavy timber, this farm is ideal for the recreational buyer that is looking for an income property in southern Iowa. There is a 52' x 23' cabin that has electric and water to it along with outbuildings for storage making it perfect for you to enjoy weekend getaways and hunting seasons. Located along a dead-end road, this land is perfect for the person looking for peace and quiet, yet close to the town of Corydon. Contact Jared Chambers for a private showing of this land.

**DIRECTIONS:** From Corydon, Iowa, travel East on Hwy 2 to 160th St. Travel North on 160th St to Ohio Rd. Travel east to 165th St. Travel North on 165th. Land is on West side of the road. Watch for signs.

#### JARED CHAMBERS

C: 641-414-0234

O: 515-222-1347

Jared@PeoplesCompany.com

© 2015 Peoples Company We obtained this information from sources we believe to be reliable. However, we have not verified its accuracy and make no guarantee, warranty or representation about it. It is submitted subject to the possibility of errors, omissions, change of price, rental or other conditions, prior sale, lease or financing, or withdrawal without notice. We include projections, opinions, assumptions or estimates for example only and they may not represent current or future performance of the property. You and your tax and legal advisors should conduct your own investigation of the property and transaction.