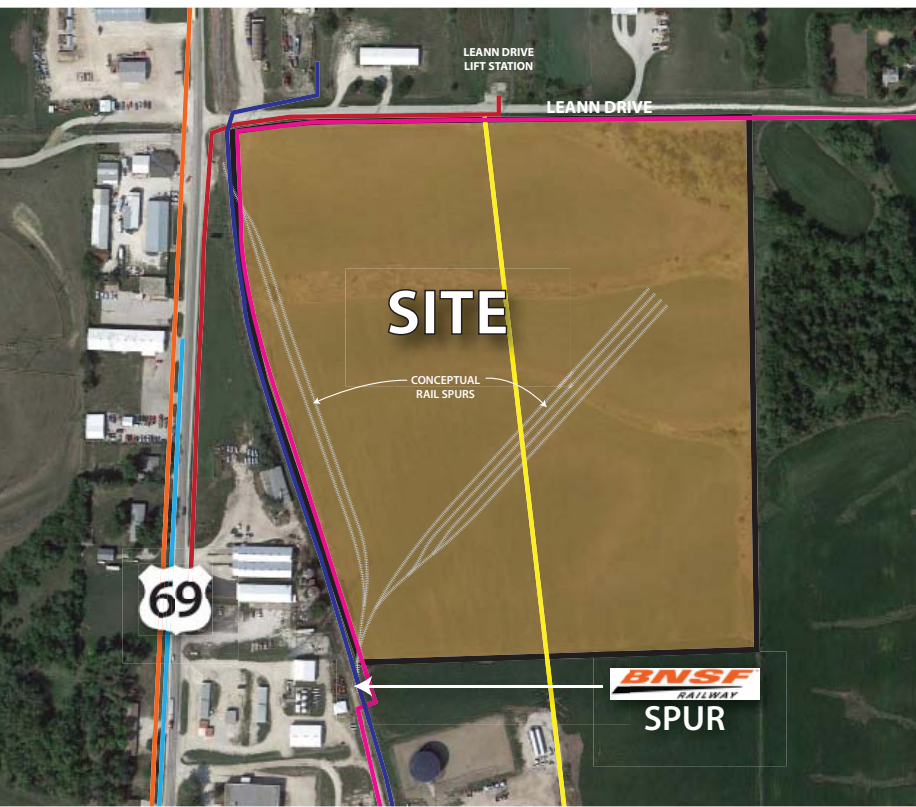


# Osceola Rail Park

Hwy 69 & Leann Dr // 34 Acres M/L  
Price: \$680,000 // Price/Acre: \$20,000

Listing #: 11562



34 acres m/l of prime industrial development ground located on Hwy 69 on the northwest corner of Osceola. Property has exclusive access to BNSF Main line via BNSF spur line. All utilities to site. Generous tax incentives and exemptions available through IEDA and CCEDC.

**Zoning/Future Land Use:** The site is currently zoned C2 in the Enterprise District. The City of Osceola has indicated a willingness to rezone the property to the applicable commercial zoning district, or to create a new zoning district specifically applicable to the site.

**Directions:** From Osceola, travel north on Main Street (Hwy 69) for 1.25 miles. Turn east on Leann Drive. Site is located on south side of Leann Drive.

Scott Kelly

Cell Phone: 515.473.8913  
Scott@PeoplesCompany.com



Steve Bruere

Cell Phone: 515.240.7500  
Steve@PeoplesCompany.com

