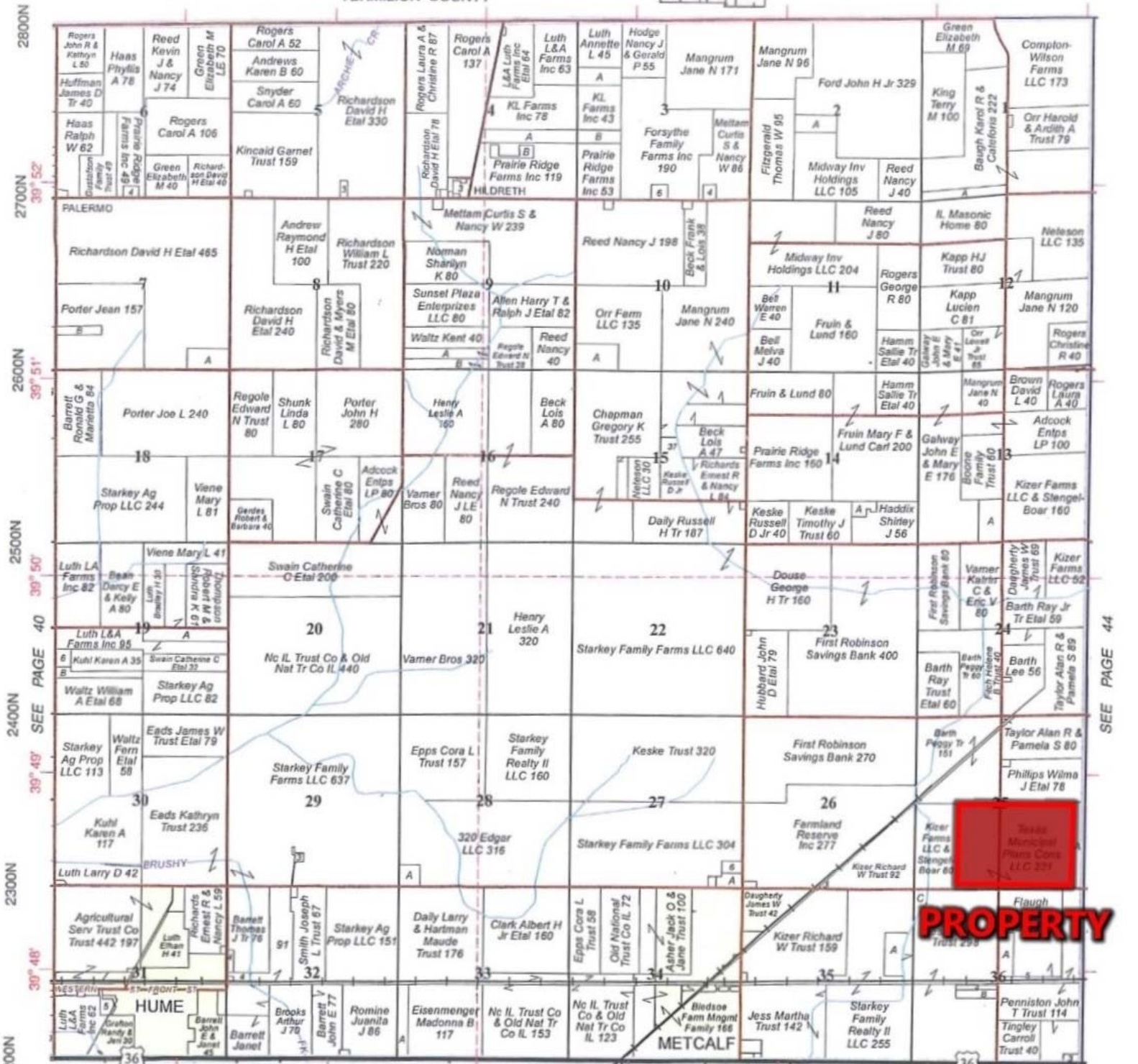


EAST PART YOUNG AMERICA

Refer to page 63 for keyed parcels
T.16N.-R.13W.

VERMILION COUNTY



28000
27000
26000
25000
24000
23000
22000

39° 52'
39° 51'
39° 50'
39° 49'
39° 48'

87° 52' 87° 51' 87° 50' 87° 49' 87° 48' 87° 47' 87° 46'

500E 600E 700E 800E 900E 1000E 1100E

SEE PAGE 32 SEE PAGE 44

Edgar County, IL SEE PAGE 34

PROPERTY