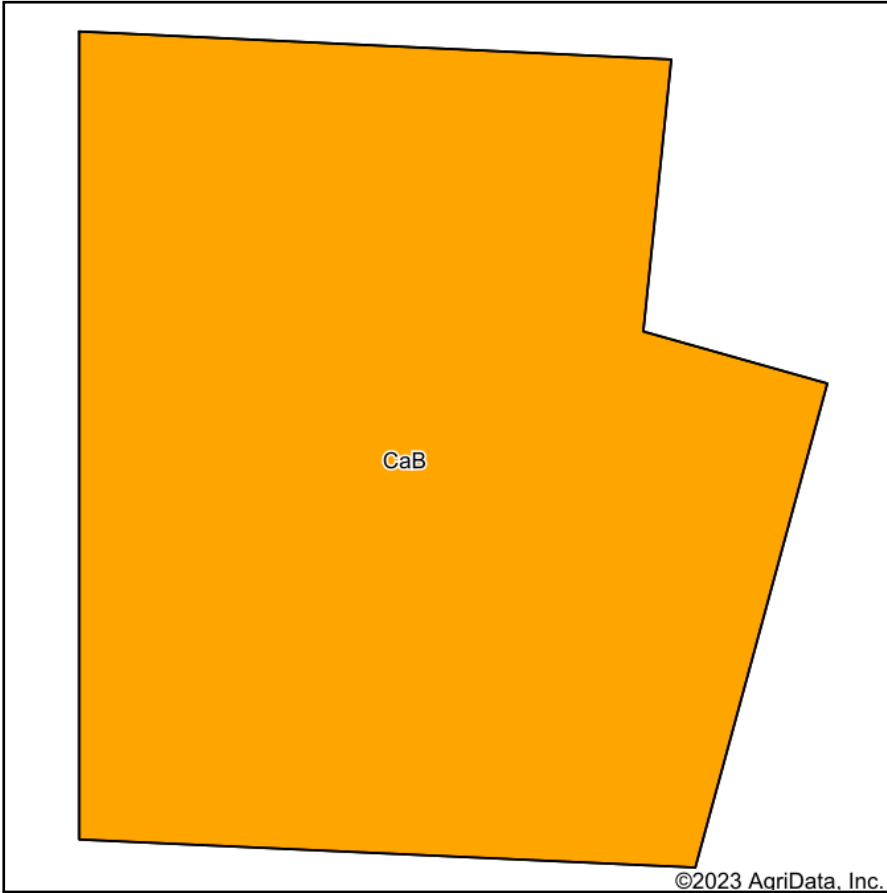
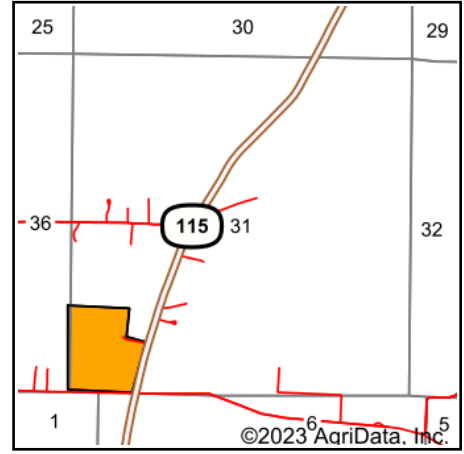


# Soils Map



Soils data provided by USDA and NRCS.



State: **Arkansas**  
 County: **Lawrence**  
 Location: **31-18N-2W**  
 Township: **Annieville**  
 Acres: **32.2**  
 Date: **2/16/2023**



Maps Provided By:



© AgriData, Inc. 2021

www.AgriDataInc.com



| Area Symbol: AR075, Soil Area Version: 19 |  |       |                  |                      |                  |                  |               |                       |                   |                 |
|---|--|-------|------------------|----------------------|------------------|------------------|---------------|-----------------------|-------------------|-----------------|
| Code                                      | Soil Description                         | Acres | Percent of field | Non-Irr Class Legend | Non-Irr Class *c | *n NCCPI Overall | *n NCCPI Corn | *n NCCPI Small Grains | *n NCCPI Soybeans | *n NCCPI Cotton |
| CaB                                       | Captina silt loam, 1 to 3 percent slopes | 32.20 | 100.0%           |                      | IIIs             | 53               | 46            | 46                    | 37                | 52              |
| <b>Weighted Average</b>                   |  |       |                  |                      | <b>3.00</b>      | <b>*n 53</b>     | <b>*n 46</b>  | <b>*n 46</b>          | <b>*n 37</b>      | <b>*n 52</b>    |

\*n: The aggregation method is "Weighted Average using all components"

\*c: Using Capabilities Class Dominant Condition Aggregation Method

Soils data provided by USDA and NRCS.