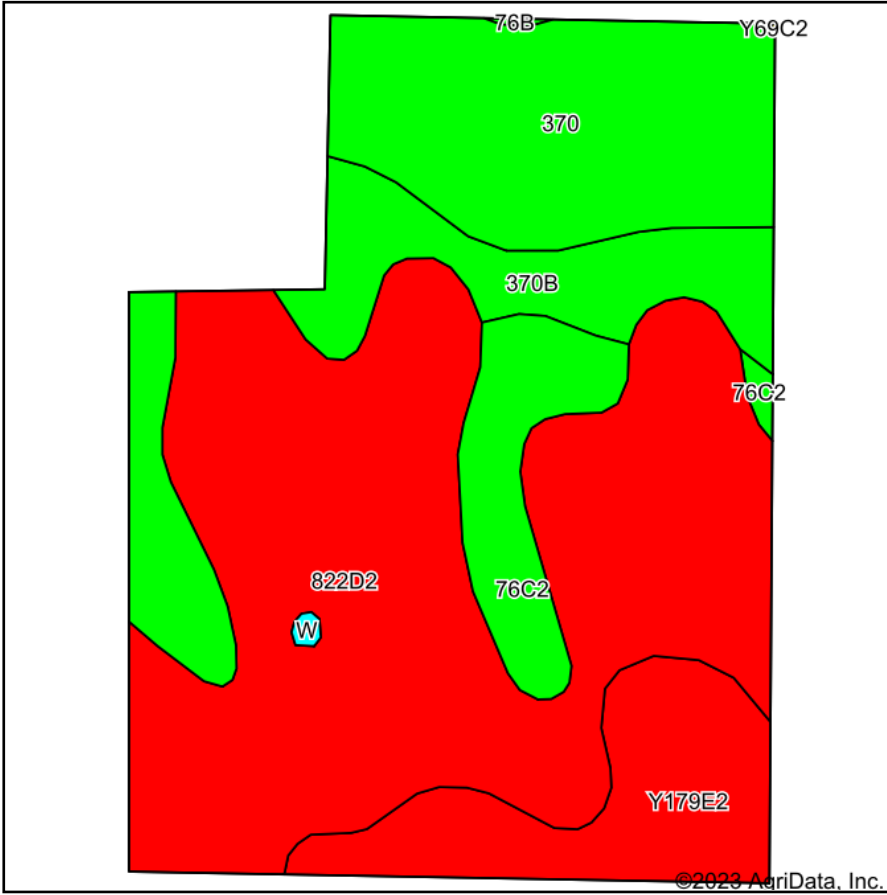
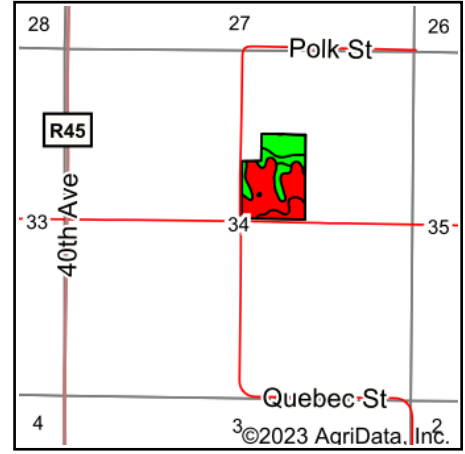


# Soils Map



Soils data provided by USDA and NRCS.



State: **Iowa**  
 County: **Warren**  
 Location: **34-75N-25W**  
 Township: **Jackson**  
 Acres: **26.32**  
 Date: **1/2/2023**



Maps Provided By:



Area Symbol: IA181, Soil Area Version: 28

Code	Soil Description	Acres	Percent of field	CSR2 Legend	Non-Irr Class *c	CSR2**	CSR	
822D2	Lamoni silty clay loam, 9 to 14 percent slopes, eroded	13.42	51.0%		IVe	10	15	
370	Sharpsburg silty clay loam, 0 to 2 percent slopes	4.75	18.0%		I	96	92	
370B	Sharpsburg silty clay loam, 2 to 5 percent slopes	3.48	13.2%		IIe	91	87	
Y179E2	Gara loam, dissected till plain, 14 to 18 percent slopes, eroded	2.87	10.9%		VIe	32		
76C2	Ladoga silt loam, dissected till plain, 5 to 9 percent slopes, eroded	1.80	6.8%		IIIe	75	65	
<b>Weighted Average</b>						<b>3.34</b>	<b>43.1</b>	<b>*-</b>

\*\*IA has updated the CSR values for each county to CSR2.

\*- CSR weighted average cannot be calculated on the current soils data, use prior data version for csr values.

\*c: Using Capabilities Class Dominant Condition Aggregation Method

Soils data provided by USDA and NRCS.