

80 ACRES M/L

LISTING # 16529



Farmland Available
MADISON COUNTY

Steve Bruere | 515.222.1347
Steve@PeoplesCompany.com

Bryan Bergdale | 712.251.8558
Bryan@PeoplesCompany.com



Valleyview Trail Winterset, IA 50273

MADISON COUNTY

Peoples Company is pleased to offer 80 acres m/l of Madison County farmland located less than 1/4 mile off of Highway 92 and less than 20 minutes from West Des Moines. The property includes 70.25 tillable acres m/l with an average CSR2 rating of 44.5. Primary soils include Wabash silty clay loam and Colo silty clay loam. Over the past two years, the property has undergone significant improvements including tree clearing, drainage tile installation work, surface ditching, and new oversized field entrances allowing for larger farm equipment. Approximately 74,237 feet of drainage tile was installed in the Fall of 2020 enhancing drainage and farmability. From a fertility standpoint, the farm had chicken litter applied for the 2021 and 2022 crops. The 2022 farm tenant has been terminated but would be happy to negotiate an agreement for 2023.



The property includes a surveyed 5-acre building site in the northwest corner suitable for nearly all home types. The location is highly desirable due to the proximity to the Des Moines Metro and being within the Winterset Community School District. Warren Rural Water District has a 4-inch line along the east side of Valley View Trail. MidAmerican Energy has electricity bordering the road as well. The property currently has access to utilities onsite. With no covenants or deed restrictions, the property has endless uses including equestrian activities, hobby farming, livestock, 4-H projects, etc. Contact agent for more information.

Farm Program Information

Corn: 20.02 Base Acres with a PLC Yield of 99
Soybeans: 35.98 Base Acres with a PLC Yield of 36

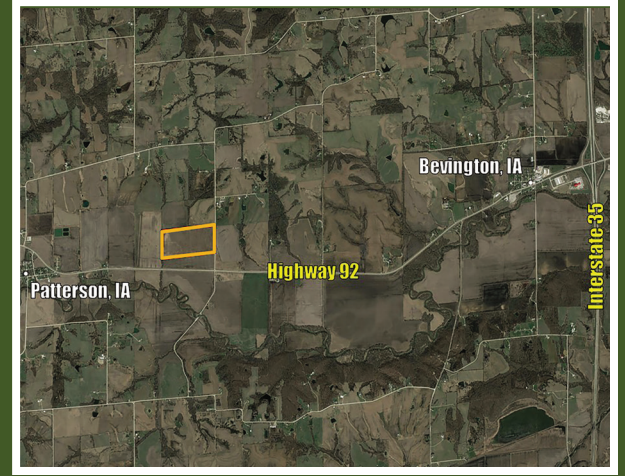
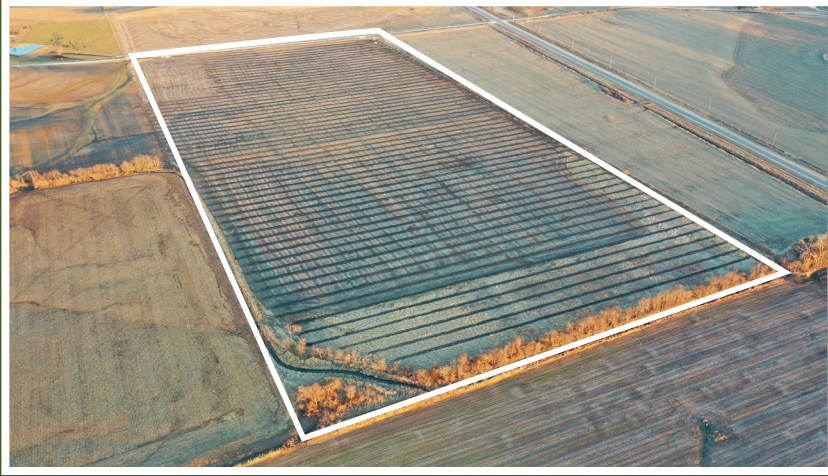
80

Net Taxes: \$1,184


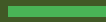
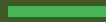
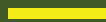
ACRES M/L

Directions

From West Des Moines, Iowa: Travel south on I-35 to exit 56. Travel west on Highway 92 approximately 3 miles to Valleyview Trail. Head North on Valleyview Trail approximately one-quarter (0.25) mile and the property will be on the west side of the road.



Tillable Soil Map

| Code | Soil Description | Acres | % of Field | Legend | CSR2 |
|-------------------------|------------------------|-------|------------|-------------------------------------------------------------------------------------|-------------|
| 248 | Wabash silty clay loam | 55.99 | 79.7% |  | 37 |
| 133 | Colo silty clay loam | 7.64 | 10.9% |  | 78 |
| 54B | Zook silty clay loam | 4.88 | 6.9% |  | 70 |
| 54 | Zook silty clay loam | 1.74 | 2.5% |  | 67 |
| Weighted Average | | | | | 44.5 |



Tile Map



Price \$840,000

Price Per Acre \$10,500/acre



LISTING #16529

80
ACRES M/L

Farmland Available
MADISON COUNTY

All information, regardless of source, is deemed reliable but not guaranteed and should be independently verified. The information may not be used for any purpose other than to identify and analyze properties and services.

The data contained herein is copyrighted by Peoples Company and is protected by all applicable copyright laws.

Any dissemination of this information is in violation of copyright laws and is strictly prohibited.



Steve Bruere | 515.222.1347
Steve@PeoplesCompany.com

Bryan Bergdale | 712.251.8558
Bryan@PeoplesCompany.com