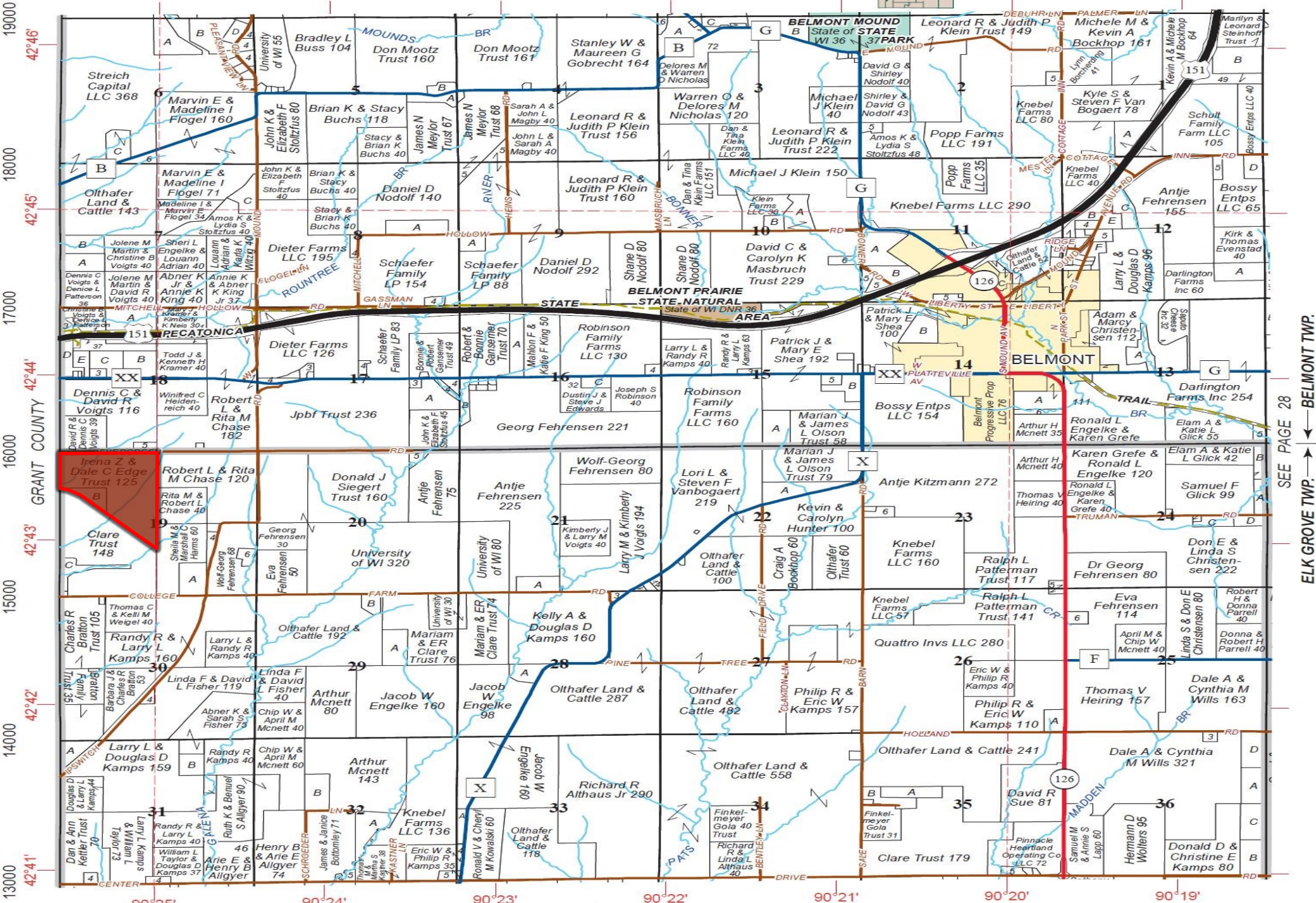


SOUTHWEST PART BELMONT NORTH PART ELK GROVE T.3N.-R.1E.

SEE PAGE 38



19000
18000
17000
16000
15000
14000
13000

42°46'
42°45'
42°44'
42°43'
42°42'
42°41'

90°25' 90°24' 90°23' 90°22' 90°21' 90°20' 90°19'

SEE PAGE 28
ELK GROVE TWP. ← BELMONT TWP.