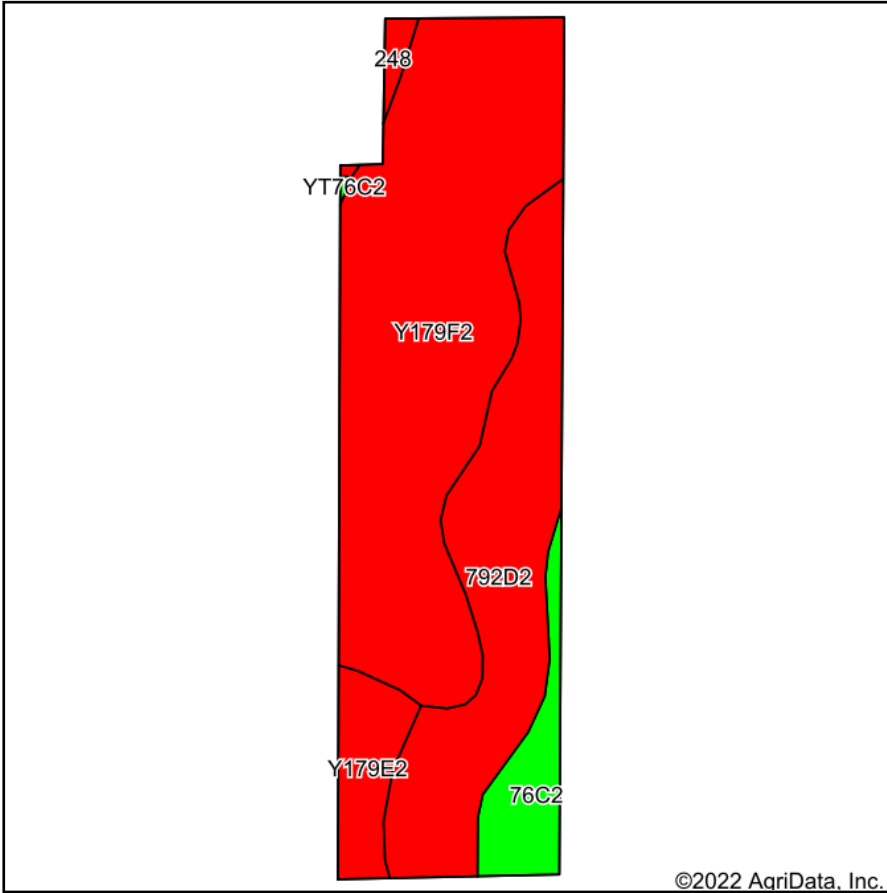
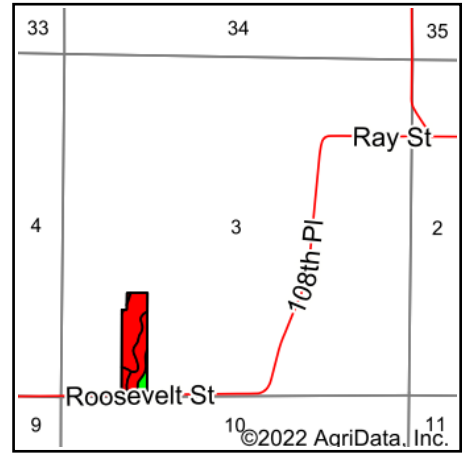


Soils Map



Soils data provided by USDA and NRCS.



State: **Iowa**
 County: **Warren**
 Location: **3-74N-24W**
 Township: **Squaw**
 Acres: **13**
 Date: **8/12/2022**



Maps Provided By:



© AgriData, Inc. 2021

www.AgriDataInc.com



Area Symbol: IA181, Soil Area Version: 26

| Code | Soil Description | Acres | Percent of field | CSR2 Legend | Non-Irr Class *c | CSR2** | CSR | *n NCCPI Overall | *n NCCPI Corn | *n NCCPI Small Grains | *n NCCPI Soybeans | |
|-------------------------|---|-------|------------------|-------------|------------------|-------------|-------------|------------------|----------------|-----------------------|-------------------|----------------|
| Y179F2 | Gara loam, dissected till plain, 18 to 25 percent slopes, eroded | 7.29 | 56.1% | | Vlle | 16 | | 57 | 57 | 36 | 38 | |
| 792D2 | Armstrong loam, 9 to 14 percent slopes, moderately eroded | 3.83 | 29.5% | | IVe | 7 | 13 | 65 | 65 | 51 | 43 | |
| 76C2 | Ladoga silt loam, dissected till plain, 5 to 9 percent slopes, eroded | 0.92 | 7.1% | | IIIe | 75 | 65 | 78 | 78 | 69 | 66 | |
| Y179E2 | Gara loam, dissected till plain, 14 to 18 percent slopes, eroded | 0.82 | 6.3% | | Vle | 32 | | 72 | 72 | 54 | 51 | |
| 248 | Wabash silty clay loam, 0 to 2 percent slopes | 0.14 | 1.1% | | IIIw | 38 | 60 | 50 | 47 | 20 | 50 | |
| Weighted Average | | | | | | 5.73 | 18.8 | *- | *n 61.7 | *n 61.7 | *n 43.7 | *n 42.4 |

**IA has updated the CSR values for each county to CSR2.

*- CSR weighted average cannot be calculated on the current soils data, use prior data version for csr values.

*n: The aggregation method is "Weighted Average using all components"

*c: Using Capabilities Class Dominant Condition Aggregation Method

Soils data provided by USDA and NRCS.