

LAND FOR SALE

LISTING #16378

PRICE: \$99,500

DESCRIPTION: Breathtaking hilltop building site overlooking the Squaw Creek River Valley! Get off the beaten path and enjoy country living on this hard to find acreage. Some of the best views in the county can be seen here, with a panoramic perspective stretching for miles. Established and mature trees provide privacy from neighbors, and a thick stand of prairie flowers makes up the balance. The property has no covenants or restrictions and will accommodate walkout or daylight house plans. Utilities are available with Warren Water District and Clarke Electric Cooperative. Take advantage of excellent schools within the Interstate 35 school system. This 3.17 acres m/l building site is located just south of Indianola between New Virginia and Liberty Center, with a short commute to the Des Moines metro.

DIRECTIONS: From the New Virginia exit of Interstate 35: Take Highway G-76 east to New Virginia. Continue east on G-76 four miles to 90th Avenue. Take 90th Ave north, one mile to Tyler Street. Take Tyler St east to 100th Avenue. The property is on the south side of Tyler Street just west of 100th Avenue.

KENNY HERRING, ALC

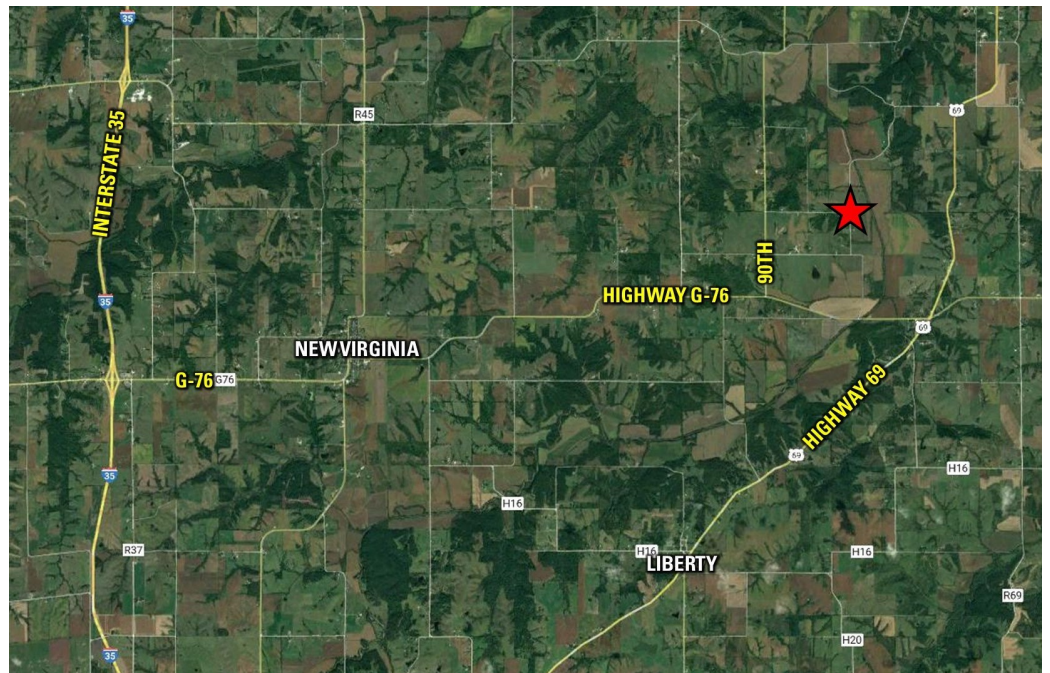
C: 515.783.8718

O: 515.222.1347

Kenny@PeoplesCompany.com

3.17 ACRES M/L

WARREN CO., NEW VIRGINIA, IOWA



PEOPLESCOMPANY.COM



855.800.LAND