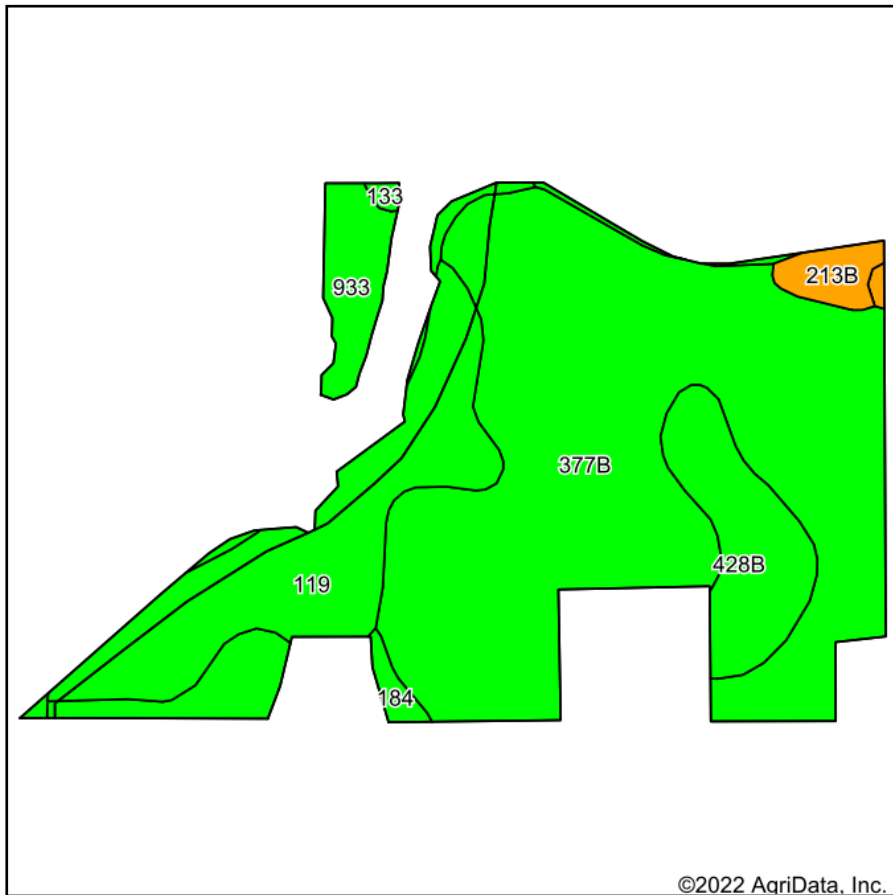
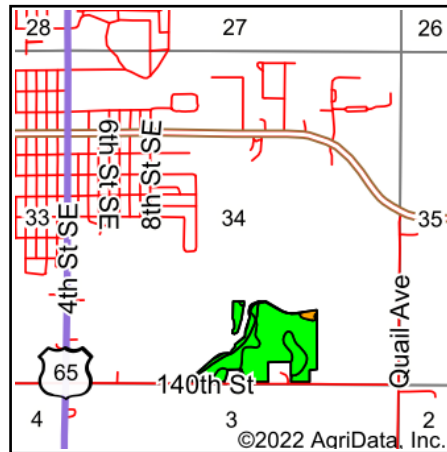


FSA Tillable Soils Map



Soils data provided by USDA and NRCS.



State: **Iowa**
 County: **Franklin**
 Location: **34-92N-20W**
 Township: **Hampton**
 Acres: **35.45**
 Date: **6/28/2022**



Maps Provided By:



© AgriData, Inc. 2021

www.AgriDataInc.com



Area Symbol: IA069, Soil Area Version: 28

Code	Soil Description	Acres	Percent of field	CSR2 Legend	Non-Irr Class *c	*i Corn Bu	*i Soybeans Bu	CSR2**	CSR	*n NCCPI Overall	
377B	Dinsdale silty clay loam, 2 to 5 percent slopes	22.91	64.6%		Ile	232.0	67.3	94	90	87	
119	Muscatine silty clay loam, 0 to 2 percent slopes	6.51	18.4%		Iw	240.0	69.6	100	100	96	
428B	Ely silty clay loam, 2 to 5 percent slopes	2.98	8.4%		Ile	220.8	64.0	88	88	90	
933	Sawmill silty clay loam, shallow loess, 0 to 2 percent slopes, occasionally flooded	1.77	5.0%		Ilw	204.8	59.4	78	80	77	
213B	Rockton loam, 30 to 40 inches to limestone, till plain, 2 to 5 percent slopes	0.69	1.9%		Ile	80.0	23.2	49	74	57	
184	Klinger silty clay loam, 1 to 4 percent slopes	0.29	0.8%		Iw	240.0	69.6	95	95	88	
133	Colo silty clay loam, 0 to 2 percent slopes, occasionally flooded	0.23	0.6%		Ilw	204.8	59.4	78	80	77	
175B	Dickinson fine sandy loam, 2 to 5 percent slopes	0.07	0.2%		Ille	80.0	23.2	50	55	63	
Weighted Average						1.81	227.8	66.1	92.7	90.8	*n 87.7

**IA has updated the CSR values for each county to CSR2.

*i Yield data provided by the ISPAID Database version 8.1.1 developed by IA State University.

*n: The aggregation method is "Weighted Average using all components"

*c: Using Capabilities Class Dominant Condition Aggregation Method

Soils data provided by USDA and NRCS.