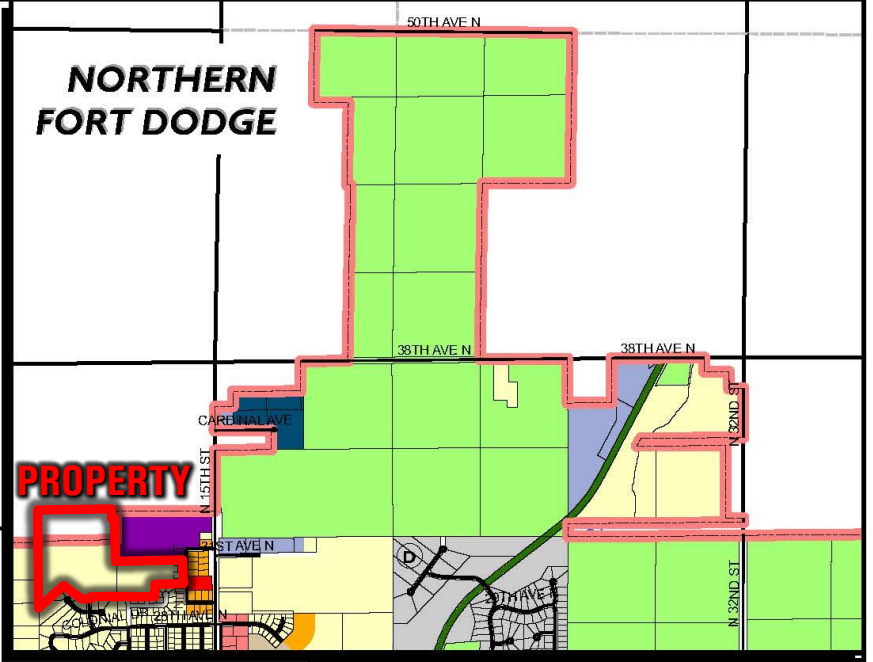
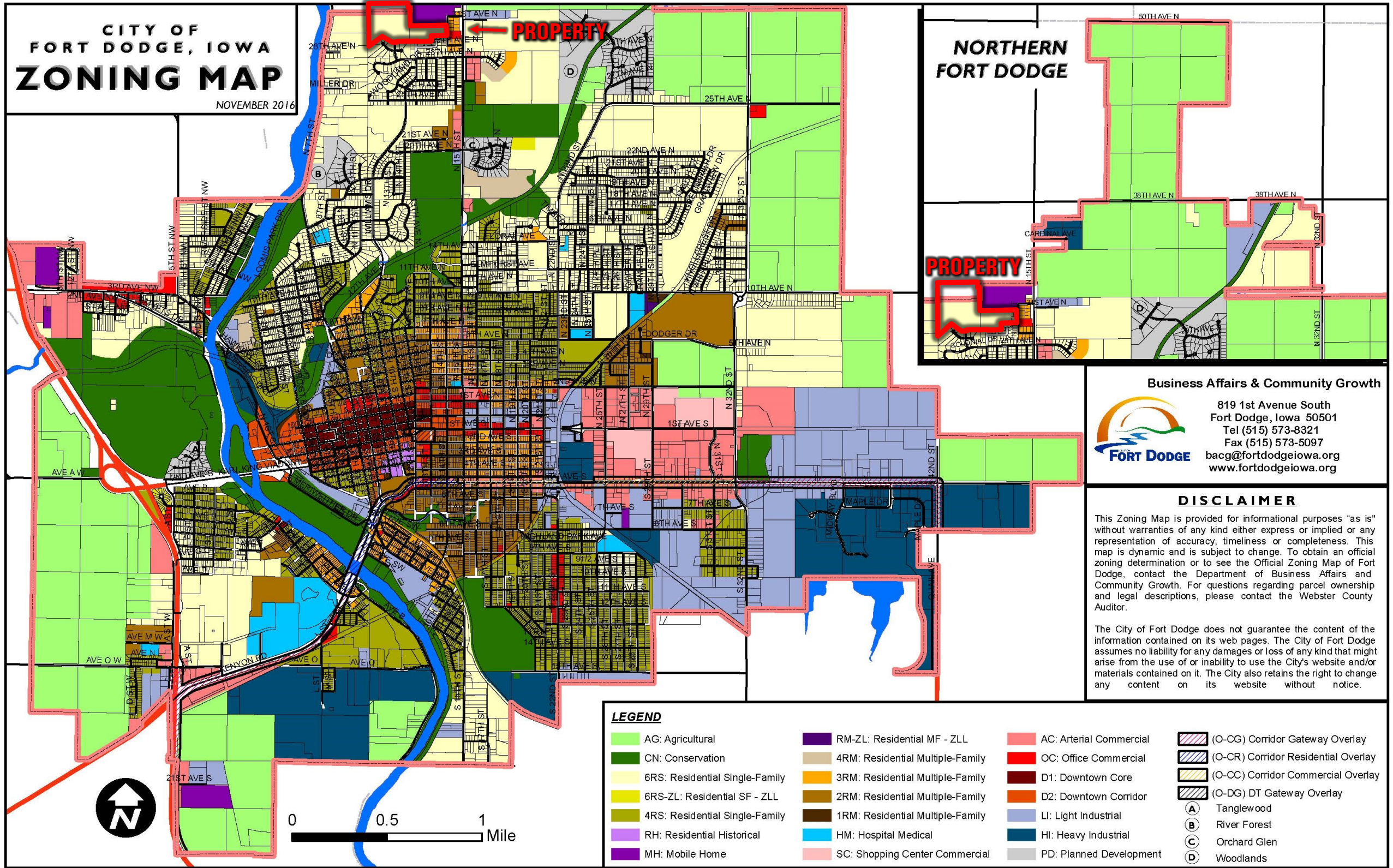


CITY OF FORT DODGE, IOWA ZONING MAP

NOVEMBER 2016



Business Affairs & Community Growth



819 1st Avenue South
 Fort Dodge, Iowa 50501
 Tel (515) 573-8321
 Fax (515) 573-5097
 bacg@fortdodgeiowa.org
 www.fortdodgeiowa.org

DISCLAIMER

This Zoning Map is provided for informational purposes "as is" without warranties of any kind either express or implied or any representation of accuracy, timeliness or completeness. This map is dynamic and is subject to change. To obtain an official zoning determination or to see the Official Zoning Map of Fort Dodge, contact the Department of Business Affairs and Community Growth. For questions regarding parcel ownership and legal descriptions, please contact the Webster County Auditor.

The City of Fort Dodge does not guarantee the content of the information contained on its web pages. The City of Fort Dodge assumes no liability for any damages or loss of any kind that might arise from the use of or inability to use the City's website and/or materials contained on it. The City also retains the right to change any content on its website without notice.

LEGEND

- | | | | |
|--------------------------------|----------------------------------|-------------------------|-------------------------------------|
| AG: Agricultural | RM-ZL: Residential MF - ZLL | AC: Arterial Commercial | (O-CG) Corridor Gateway Overlay |
| CN: Conservation | 4RM: Residential Multiple-Family | OC: Office Commercial | (O-CR) Corridor Residential Overlay |
| 6RS: Residential Single-Family | 3RM: Residential Multiple-Family | D1: Downtown Core | (O-CC) Corridor Commercial Overlay |
| 6RS-ZL: Residential SF - ZLL | 2RM: Residential Multiple-Family | D2: Downtown Corridor | (O-DG) DT Gateway Overlay |
| 4RS: Residential Single-Family | 1RM: Residential Multiple-Family | LI: Light Industrial | (A) Tanglewood |
| RH: Residential Historical | HM: Hospital Medical | HI: Heavy Industrial | (B) River Forest |
| MH: Mobile Home | SC: Shopping Center Commercial | PD: Planned Development | (C) Orchard Glen |
| | | | (D) Woodlands |

