



Clarke County, Iowa

# Land Available

LISTING #16073 | LISTING #16074 | LISTING #16075

40 ACRES M/L

80 ACRES M/L

19.25 ACRES M/L



**Directions**

From Osceola, Iowa: Travel north on Interstate 35 for approximately three miles to Exit 36. Continue north on the Truro Pavement for approximately five miles. The properties will be on both sides of the road. Look for the Peoples Company signs.

From Truro, Iowa: Travel east out of town to the first intersection and turn right (south) onto County Highway R36. Continue for approximately six and one-half miles and the properties will be on the west and east side of the road. Look for the Peoples Company signs.

TRURO, IOWA  
NEW VIRGINIA, IOWA  
OSCEOLA, IOWA  
40 Acres M/L  
80 Acres M/L  
19.25 Acres M/L



12119 STRATFORD DR, STE B  
CLIVE, IA 50325  
PEOPLESCOMPANY.COM



**Kenny Herring**  
515.783.8718  
Kenny@PeoplesCompany.com

**Matt Adams**  
515.423.9235  
Matt@PeoplesCompany.com

All information, regardless of source, is deemed reliable but not guaranteed and should be independently verified. The information may not be used for any purpose other than to identify and analyze properties and services. The data contained herein is copyrighted by Peoples Company and is protected by all applicable copyright laws. Any dissemination of this information is in violation of copyright laws and is strictly prohibited.

For more information visit [PEOPLESCOMPANY.COM](http://PEOPLESCOMPANY.COM)



Clarke County, Iowa

# Land Available

LISTING #16073 | LISTING #16074 | LISTING #16075

40 ACRES M/L

80 ACRES M/L

19.25 ACRES M/L

**Kenny Herring**  
515.783.8718  
Kenny@PeoplesCompany.com

**Matt Adams**  
515.423.9235  
Matt@PeoplesCompany.com



# 40 Acres M/I

Clarke County, Iowa

LISTING #16073



Scan the QR Code with your phone to view this listing online



A rare and highly sought-after opportunity in Clarke County, Iowa – 40 acres m/l immediately southwest of the intersection of the Truro Pavement and Pacific Street. This property is located northwest of Osceola and south of Truro, Iowa in the Clarke Community School District. This beautiful site would work well for an executive style acreage or possible building site/s overlooking the gently rolling hills of southern Iowa and nearby Squaw Creek! The proposed 816-acre Clarke County, Iowa Reservoir Project (see Water Supply Maps) is located less than one mile directly south of this property.

There are 23.51 FSA tillable acres carrying a CSR2 soil rating of 47.0. The farm currently consists of hay acres, timber draws and fingers, and a large four-acre pond located in the heart of the property. Improvements include electric through Alliant Energy at the road and rural water through Southern Iowa Rural Water Association. There is a four-inch main waterline running through the property and along on the north side of Pacific Street (see SIRWA Waterlines Map). Internet is available in the area through Kinetic by Windstream. Don't miss this opportunity to build whatever you desire with no covenants or nearby lakefront views!

**Kenny Herring**  
515.783.8718  
Kenny@PeoplesCompany.com

**Matt Adams**  
515.423.9235  
Matt@PeoplesCompany.com

PROPERTY PRICE  
**\$440,000**

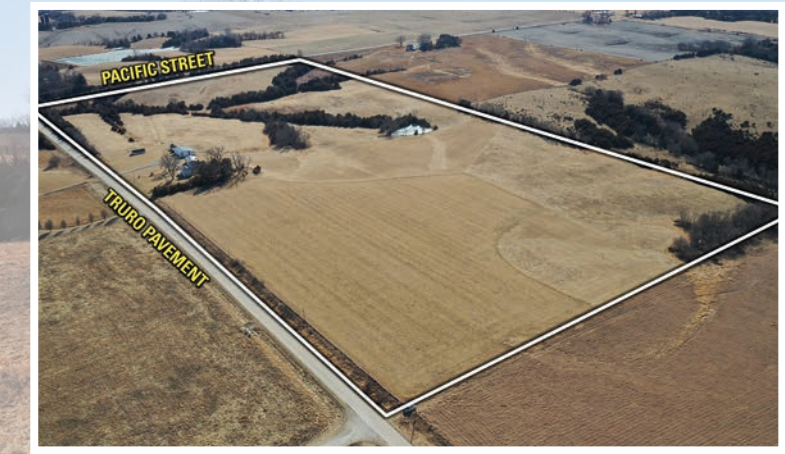
# 80 Acres M/I

Clarke County, Iowa

LISTING #16074



Scan the QR Code with your phone to view this listing online



Code	Soil Description	Acres	% of Field	Legend	CSR2
368B	Mackburg silty clay loam	9.43	26.8%		89
368	Mackburg silty clay loam	8.42	24.0%		93
570C	Nira silty clay loam	6.07	17.3%		81
69C2	Clearfield silty clay loam	6.00	17.1%		56
822D2	Lamoni clay loam	5.21	14.8%		11
<b>Weighted Average:</b>					<b>71.4</b>



Peoples Company is pleased to present 80 acres m/l of beautiful Clarke County, Iowa farmland located only 40 minutes south of the Des Moines Metro! Conveniently located less than one mile from the proposed 816-acre Clarke County, Iowa Reservoir Project with Squaw Creek (see Water Supply Maps) along the Truro Pavement between Osceola, Iowa and Truro, Iowa, this combination property of tillable acres, pasture acres, and building structures offers potential for those looking for recreational value, future building sites, or a longer-term land investment.

This combination farm consists of 35.13 FSA tillable acres located on the northern half of the property carrying a CSR2 soil rating of 71.4. The primary soil types of the high-quality tillable acres include Macksburg silty clay loam, Nira silty clay loam, and Clearfield silty clay loam. The balance of the property includes pasture acres comprised of cool-season grasses, wooded draws and fingers, and a small pond located on the southern portion of the tract.

PROPERTY PRICE  
**\$680,000**

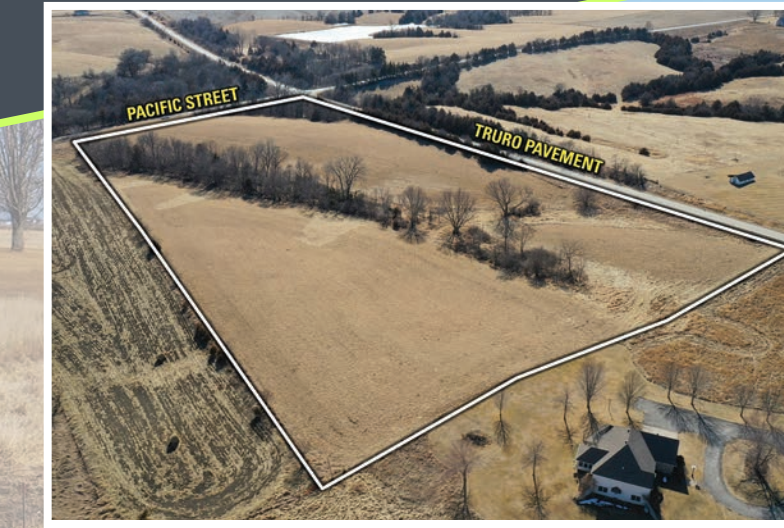
# 19.75 Acres M/I

Clarke County, Iowa

LISTING #16075



Scan the QR Code with your phone to view this listing online



Presenting 19.75 acres m/l that would serve as an excellent acreage setting or executive building site located one mile directly north of the proposed 816-acre Clarke County, Iowa Reservoir Project (see Water Supply Maps). Situated within the boundary lines of the Clarke Community School District, this premier location offers spectacular views of the rolling hills of the Clarke County countryside and nearby Squaw Creek! The property offers entrances on the south and northwest corner with multiple locations to build that are suitable for nearly all home types and walkouts.

Utilities are available at the road with rural water service through Southern Iowa Rural Water Association and electric service through Alliant Energy. There is a four-inch main waterline located along the northwest corner of the property (see SIRWA Waterlines Map). Internet is available in the area through Kinetic by Windstream. The property is located along the Truro Pavement in Section 14 of Washington Township. Take advantage of a great location with no covenants that allow you to build whatever you desire!

PROPERTY PRICE  
**\$256,750**

