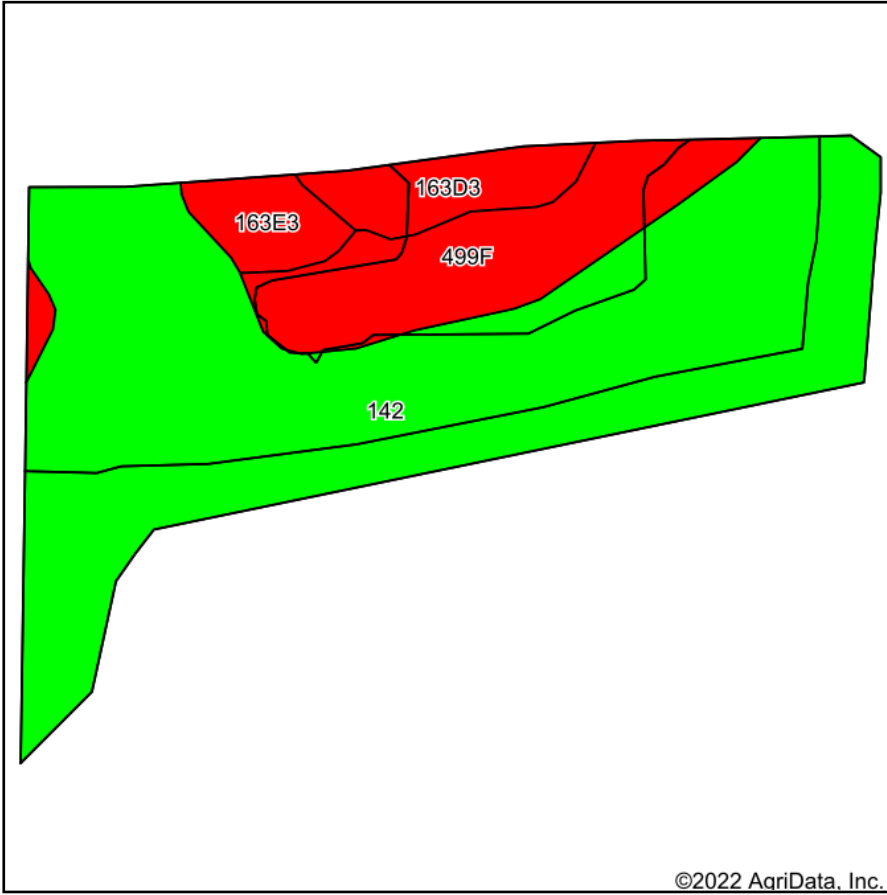
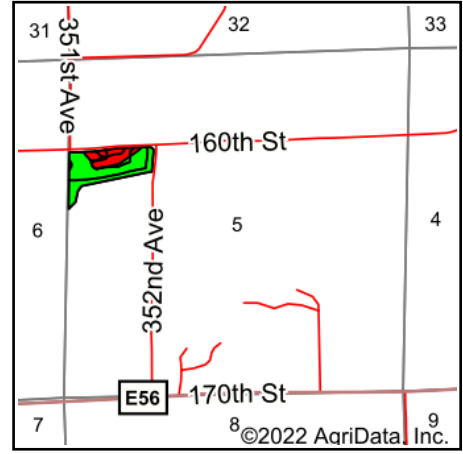


# Soils Map



Soils data provided by USDA and NRCS.



State: **Iowa**  
 County: **Clinton**  
 Location: **5-82N-5E**  
 Township: **Center**  
 Acres: **15.05**  
 Date: **2/11/2022**



Maps Provided By:



© AgriData, Inc. 2021

www.AgriDataInc.com



Area Symbol: IA045, Soil Area Version: 27

Code	Soil Description	Acres	Percent of field	CSR2 Legend	Non-Irr Class *c	*i Corn Bu	*i Alfalfa Tons	*i Soybeans Bu	CSR2**	*n NCCPI Corn	*n NCCPI Soybeans
142	Chaseburg silt loam, moderately well drained, 0 to 2 percent slopes	11.08	73.6%		IIw	180.8	5.1	52.4	79	84	86
499F	Nordness silt loam, 14 to 25 percent slopes	2.35	15.6%		VIIIs	88	2.5	25.5	5	43	27
163D3	Fayette silty clay loam, 9 to 14 percent slopes, severely eroded	0.88	5.8%		IVe	153.6	4.3	44.5	40	74	54
163E3	Fayette silty clay loam, 14 to 18 percent slopes, severely eroded	0.74	4.9%		Vle	129.6	3.6	37.6	29	71	51
<b>Weighted Average</b>						<b>3.09</b>	<b>162.2</b>	<b>4.6</b>	<b>62.7</b>	<b>*n 76.4</b>	<b>*n 73.2</b>

\*\*IA has updated the CSR values for each county to CSR2.

\*i Yield data provided by the ISPAID Database version 8.1.1 developed by IA State University.

\*n: The aggregation method is "Weighted Average using all components"

\*c: Using Capabilities Class Dominant Condition Aggregation Method

Soils data provided by USDA and NRCS.