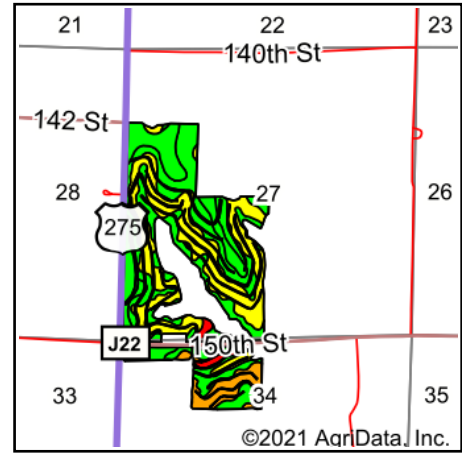
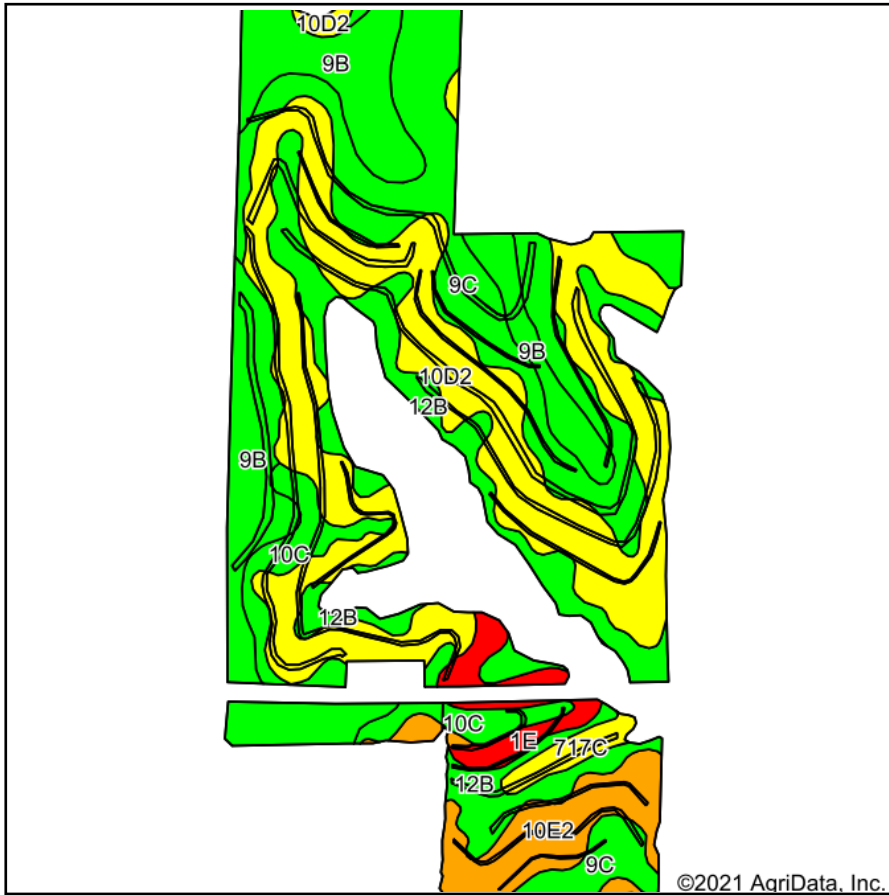


DCP Cropland Soils Map



State: **Iowa**
 County: **Fremont**
 Location: **27-70N-42W**
 Township: **Green**
 Acres: **196.65**
 Date: **8/20/2021**



Soils data provided by USDA and NRCS.

Area Symbol: IA071, Soil Area Version: 27

Code	Soil Description	Acres	Percent of field	CSR2 Legend	Non-Irr Class *c	Irr Class *c	*i Corn	*i Soybeans	CSR2**	CSR	*n NCCPI Overall
10D2	Monona silt loam, 9 to 14 percent slopes, eroded	63.08	32.1%			IIIe	177.6	51.5	60	53	79
9C	Marshall silty clay loam, 5 to 9 percent slopes	39.19	19.9%			IIIe	216	62.6	89	70	95
9B	Marshall silty clay loam, 2 to 5 percent slopes	36.18	18.4%			Ile	232	67.3	95	85	89
12B	Napier silt loam, 2 to 5 percent slopes	27.27	13.9%			Ile	230.4	66.8	93	77	90
10E2	Monona silt loam, 14 to 20 percent slopes, eroded	12.93	6.6%			IVe	153.6	44.5	45	43	73
10C	Monona silt loam, 5 to 9 percent slopes	9.67	4.9%			IIIe	216	62.6	89	65	89
1E	Ida silt loam, 14 to 20 percent slopes	5.61	2.9%			IVe	113.6	32.9	25	35	75
717C	Napier-Gullied land complex, 2 to 10 percent slopes	2.72	1.4%			IIIe	88	25.5	55	5	10
Weighted Average							199.8	57.9	76.2	64.4	*n 84.6

**IA has updated the CSR values for each county to CSR2.

*i Yield data provided by the ISPAID Database version 8.1.1 developed by IA State University.

*n: The aggregation method is "Weighted Average using all components"

*c: Using Capabilities Class Dominant Condition Aggregation Method

Soils data provided by USDA and NRCS.