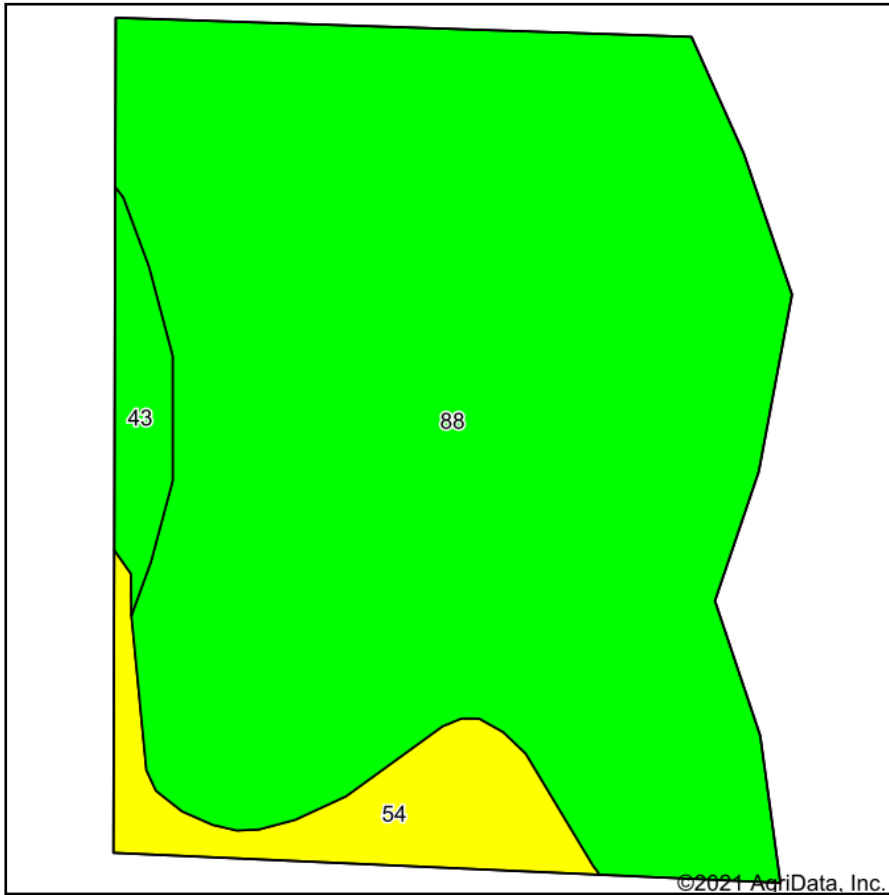
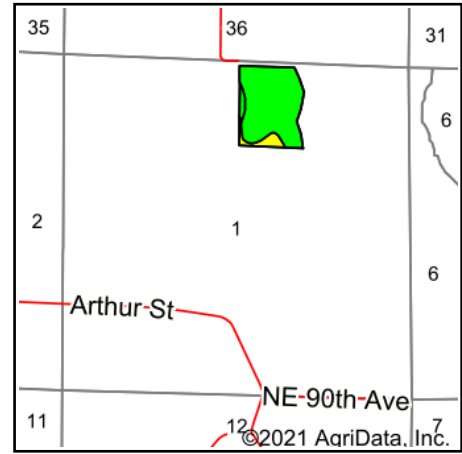


# Tillable Soils Map



Soils data provided by USDA and NRCS.



State: **Iowa**  
 County: **Warren**  
 Location: **1-77N-23W**  
 Township: **Allen**  
 Acres: **26**  
 Date: **7/6/2021**



Maps Provided By:



© AgriData, Inc. 2021

www.AgriDataInc.com



Area Symbol: IA181, Soil Area Version: 25

Code	Soil Description	Acres	Percent of field	CSR2 Legend	Non-Irr Class *c	CSR2**	CSR	*n NCCPI Overall	*n NCCPI Corn	*n NCCPI Soybeans
88	Nevin silty clay loam, 0 to 2 percent slopes, rarely flooded	23.10	88.8%		lw	95	90	98	98	88
54	Zook silty clay loam, 0 to 2 percent slopes, occasionally flooded	2.06	7.9%		llw	67	70	63	58	63
43	Bremer silty clay loam, 0 to 2 percent slopes, occasionally flooded	0.84	3.2%		llw	74	82	85	85	78
<b>Weighted Average</b>						<b>92.1</b>	<b>88.2</b>	<b>*n 94.8</b>	<b>*n 94.4</b>	<b>*n 85.7</b>

\*\*IA has updated the CSR values for each county to CSR2.

\*n: The aggregation method is "Weighted Average using all components"

\*c: Using Capabilities Class Dominant Condition Aggregation Method

Soils data provided by USDA and NRCS.