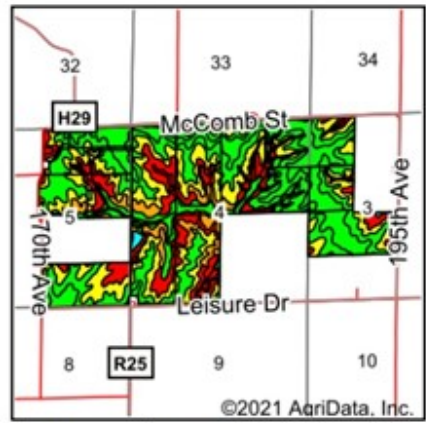
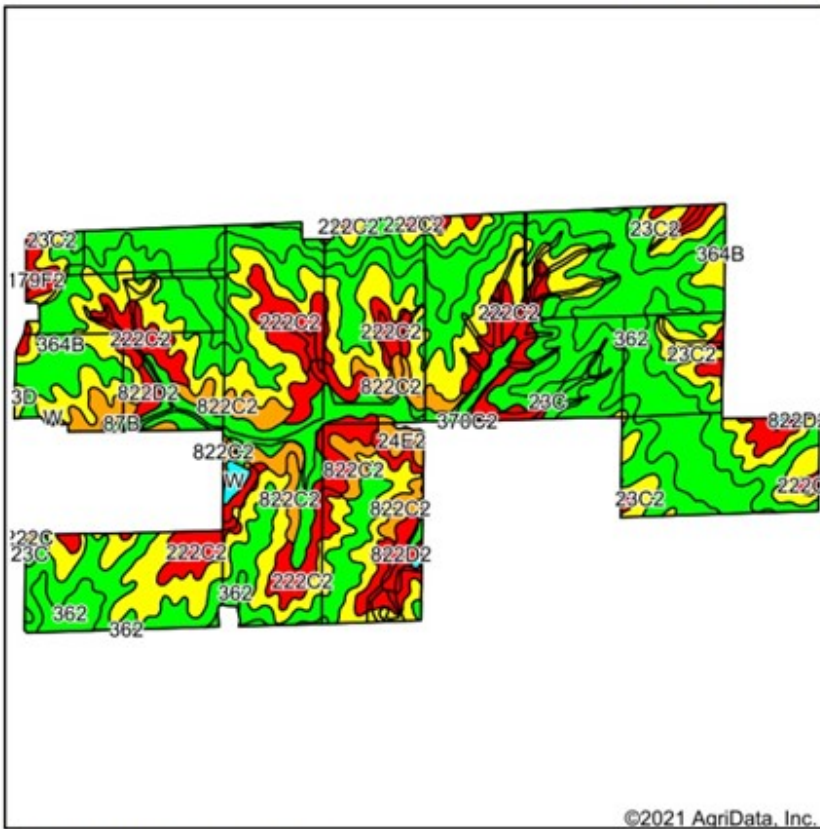


Total Soils Map



State: Iowa
 County: Clarke
 Location: 4-72N-26W
 Township: Ward
 Acres: 867.74
 Date: 6/17/2021



Soils data provided by USDA and NRCS.

©2021 AgriData, Inc.

Area Symbol: IA039, Soil Area Version: 26							
Code	Soil Description	Acres	Percent of field	CSR2 Legend	Non-Irr Class *c	CSR2**	*n NCCPI Overall
364B	Grundy silty clay loam, 2 to 5 percent slopes	245.75	28.3%		IIe	72	80
23C2	Arispe silty clay loam, 5 to 9 percent slopes, moderately eroded	224.77	25.9%		IIIe	62	75
362	Haig silt loam, 0 to 2 percent slopes	132.34	15.3%		IIw	83	76
222C2	Clarinda silty clay loam, 5 to 9 percent slopes, moderately eroded	101.03	11.6%		IVw	28	55
13B	Olmitz-Zook-Colo complex, 0 to 5 percent slopes	45.26	5.2%		IIw	77	80
822C2	Lamoni clay loam, 5 to 9 percent slopes, moderately eroded	37.50	4.3%		IIIe	31	58
822D2	Lamoni clay loam, 9 to 14 percent slopes, moderately eroded	18.60	2.1%		IVe	11	65
23C	Arispe silty clay loam, 5 to 9 percent slopes	18.45	2.1%		IIIe	66	80
822D3	Lamoni clay loam, 9 to 14 percent slopes, severely eroded	17.78	2.0%		VIe	7	58
93D2	Shelby-Adair complex, 9 to 14 percent slopes, moderately eroded	6.27	0.7%		IVe	32	70
24E2	Shelby clay loam, 14 to 18 percent slopes, moderately eroded	5.82	0.7%		IVe	40	67
W	Water	3.86	0.4%			0	
222D2	Clarinda silty clay loam, 9 to 14 percent slopes, moderately eroded	3.75	0.4%		IVe	8	53
S192C2	Adair clay loam, heavy till, 5 to 9 percent slopes, moderately eroded	3.04	0.4%		IIIe	29	68
87B	Zook-Colo silty clay loams, 0 to 5 percent slopes, occasionally flooded	1.93	0.2%		IIw	71	74
179F2	Gara clay loam, 18 to 25 percent slopes, moderately eroded	1.15	0.1%		IVe	11	53
93D	Shelby-Adair loams, 9 to 14 percent slopes	0.27	0.0%		IVe	40	79
222C	Clarinda silty clay loam, 5 to 9 percent slopes	0.17	0.0%		IVw	31	59
Weighted Average						60.3	*n 72.7

**IA has updated the CSR values for each county to CSR2.
 *n: The aggregation method is "Weighted Average using all components"
 *c: Using Capabilities Class Dominant Condition Aggregation Method