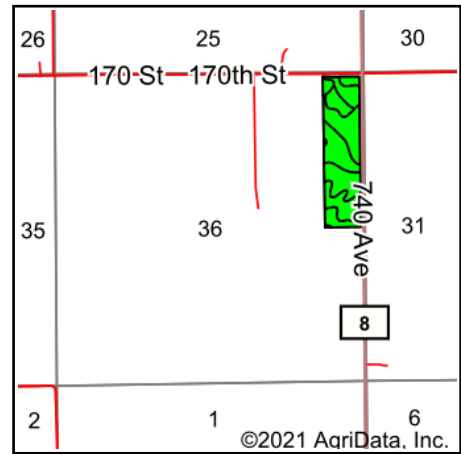
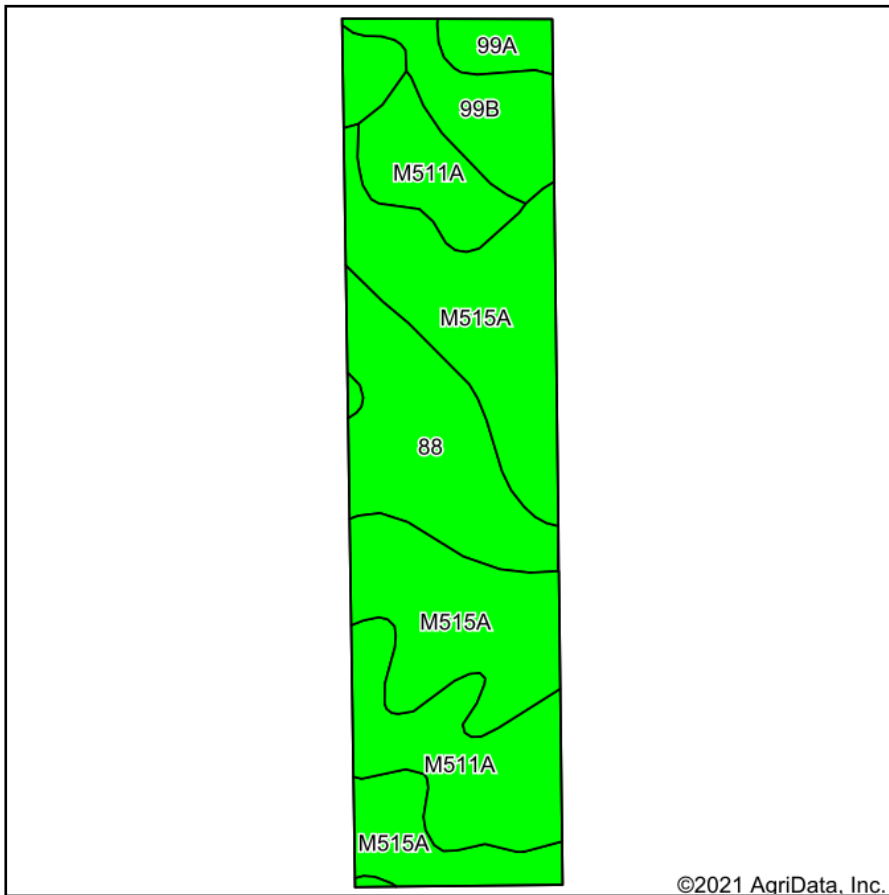


# Soils Map - Tillable Acres



State: **Minnesota**  
 County: **Mower**  
 Location: **36-102N-15W**  
 Township: **Clayton**  
 Acres: **36.82**  
 Date: **4/21/2021**



Maps Provided By:



Soils data provided by USDA and NRCS.

©2021 AgriData, Inc.

© AgriData, Inc. 2021

www.AgriDataInc.com

Area Symbol: MN099, Soil Area Version: 16

Code	Soil Description	Acres	Percent of field	PI Legend	Non-Irr Class *c	Productivity Index	Corn	Oats	Soybeans	*n NCCPI Corn	*n NCCPI Soybeans
M515A	Tripoli clay loam, 0 to 2 percent slopes	16.23	44.1%		Ilw	87				68	63
M511A	Readlyn silt loam, 1 to 3 percent slopes	8.60	23.4%		lw	100				80	68
88	Clyde silty clay loam, 0 to 3 percent slopes	7.54	20.5%		Ilw	86	193.5	76.5	56	90	85
99B	Racine loam, 2 to 5 percent slopes	3.25	8.8%		Ile	91				68	57
99A	Racine silt loam, 0 to 2 percent slopes	1.20	3.3%		lw	98	211	83	59	94	82
<b>Weighted Average</b>						<b>90.5</b>	<b>46.5</b>	<b>18.4</b>	<b>13.4</b>	<b>*n 76.2</b>	<b>*n 68.8</b>

\*n: The aggregation method is "Weighted Average using all components"

\*c: Using Capabilities Class Dominant Condition Aggregation Method

Soils data provided by USDA and NRCS.