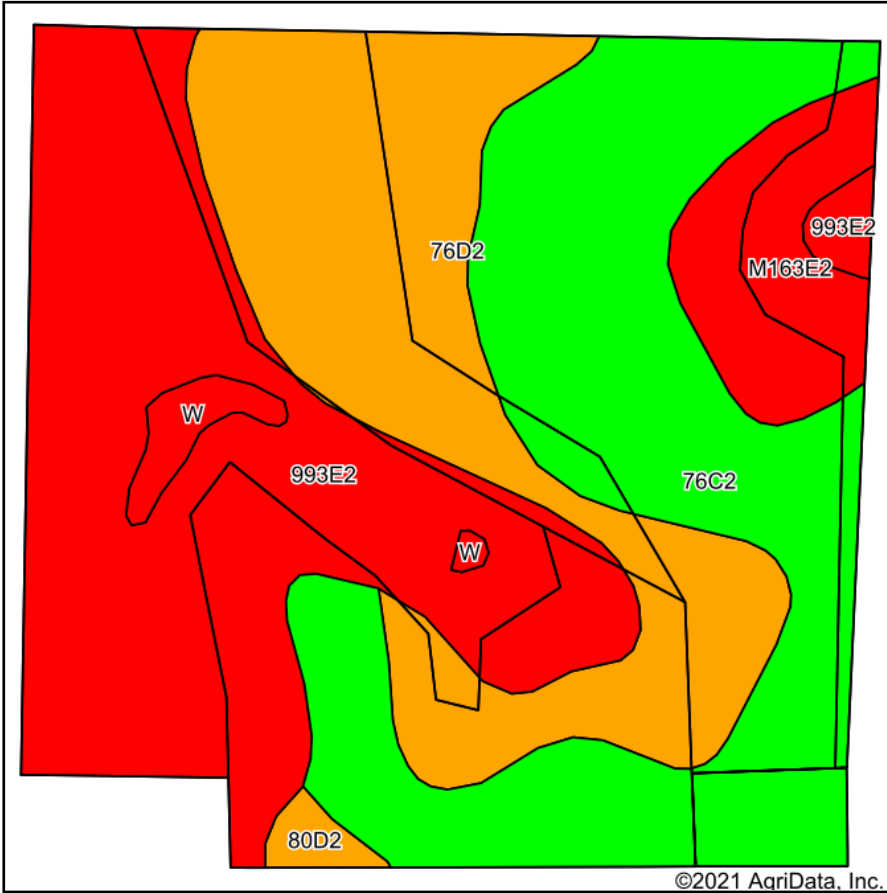
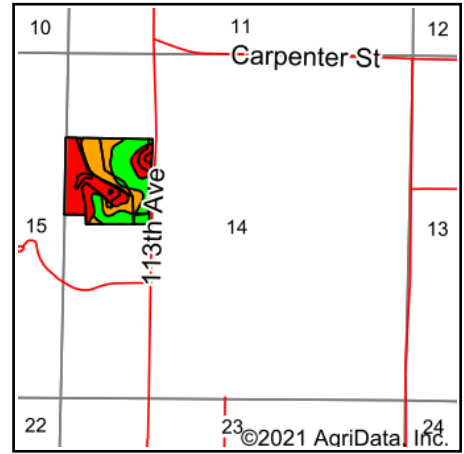


# Soils Map



Soils data provided by USDA and NRCS.



State: **Iowa**  
 County: **Warren**  
 Location: **14-77N-24W**  
 Township: **Greenfield**  
 Acres: **38.66**  
 Date: **5/6/2021**



Maps Provided By:



© AgriData, Inc. 2021

www.AgriDataInc.com



Area Symbol: IA181, Soil Area Version: 25

Code	Soil Description	Acres	Percent of field	CSR2 Legend	Non-Irr Class *c	CSR2**	*n NCCPI Overall	*n NCCPI Corn	*n NCCPI Soybeans
993E2	Armstrong-Gara loams, 14 to 18 percent slopes, moderately eroded	13.24	34.2%		V1e	17	63	63	43
76C2	Ladoga silt loam, dissected till plain, 5 to 9 percent slopes, eroded	12.29	31.8%		IIIe	75	78	78	66
76D2	Ladoga silt loam, 9 to 14 percent slopes, eroded	9.63	24.9%		IIIe	49	75	75	62
M163E2	Fayette silt loam, till plain, 14 to 18 percent slopes, eroded	2.62	6.8%		IVe	36	73	73	59
W	Water	0.56	1.4%			0			
80D2	Clinton silt loam, 9 to 14 percent slopes, eroded	0.32	0.8%		IIIe	46	72	72	58
<b>Weighted Average</b>						<b>44.7</b>	<b>*n 70.6</b>	<b>*n 70.6</b>	<b>*n 55.6</b>

\*\*IA has updated the CSR values for each county to CSR2.

\*n: The aggregation method is "Weighted Average using all components"

\*c: Using Capabilities Class Dominant Condition Aggregation Method

Soils data provided by USDA and NRCS.