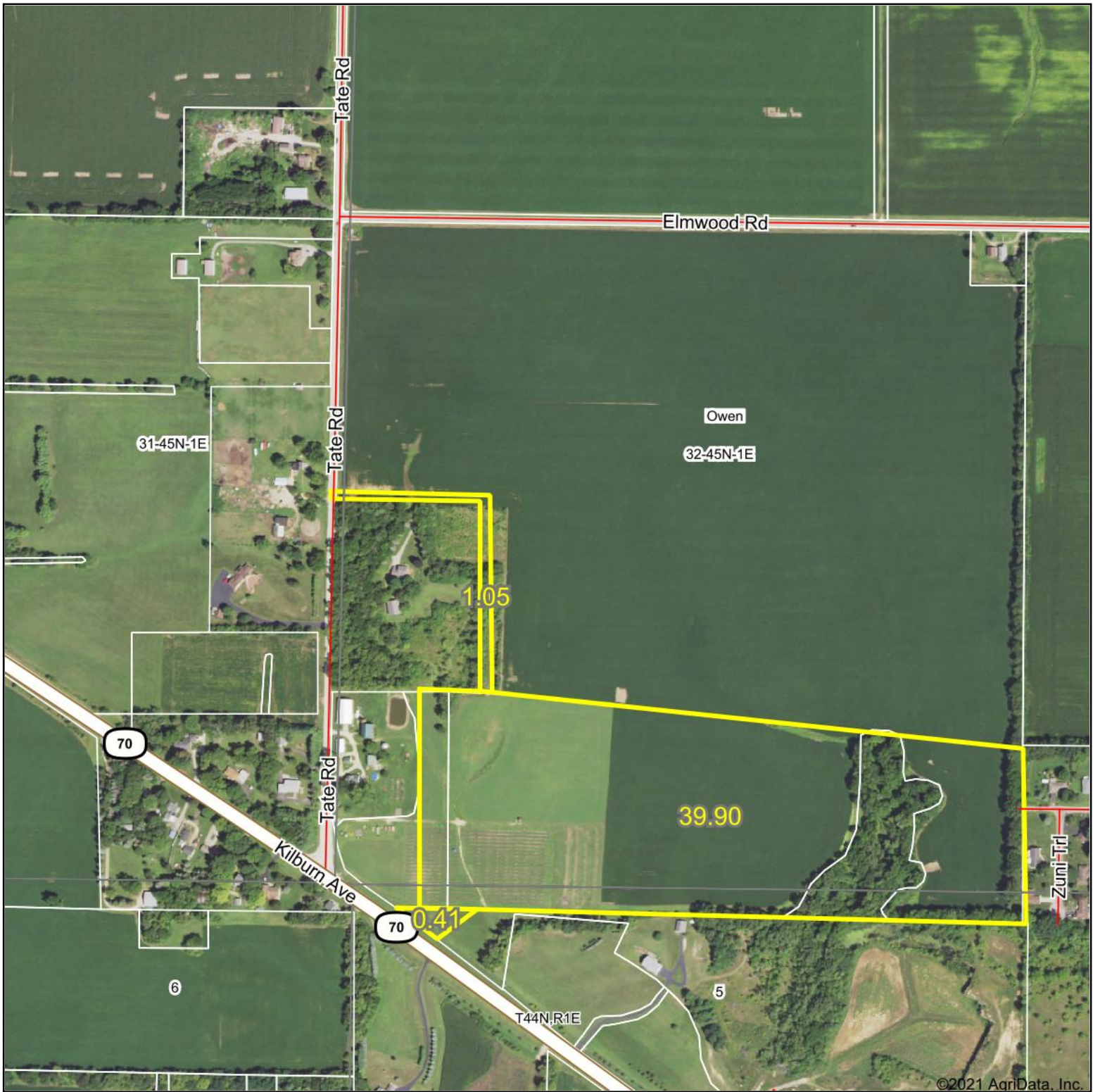


Aerial Map - Total Surveyed Acres



Map Center: 42° 19' 41.04, -89° 9' 9.5

0ft 590ft 1180ft

32-45N-1E

Winnebago County
Illinois



2/12/2021

Maps Provided By:



© AgriData, Inc. 2021

www.AgriDataInc.com

Field borders provided by Farm Service Agency as of 5/21/2008.